

Sta.

0700 = N.W. cor. Sec. 11-87-14

13145.1 = $\frac{1}{4}$ $\frac{1}{4}$ fc.

26+58.4 = N.W. cor. Sec. 11-87-14 found lime stone
3' x 9' x 12" and iron bar $\frac{1}{2}$ " x 18" also an
lime covered stone and set e.m. on
top 12" below ground and set iron bar
on side.

No $\frac{3}{4}$ fc

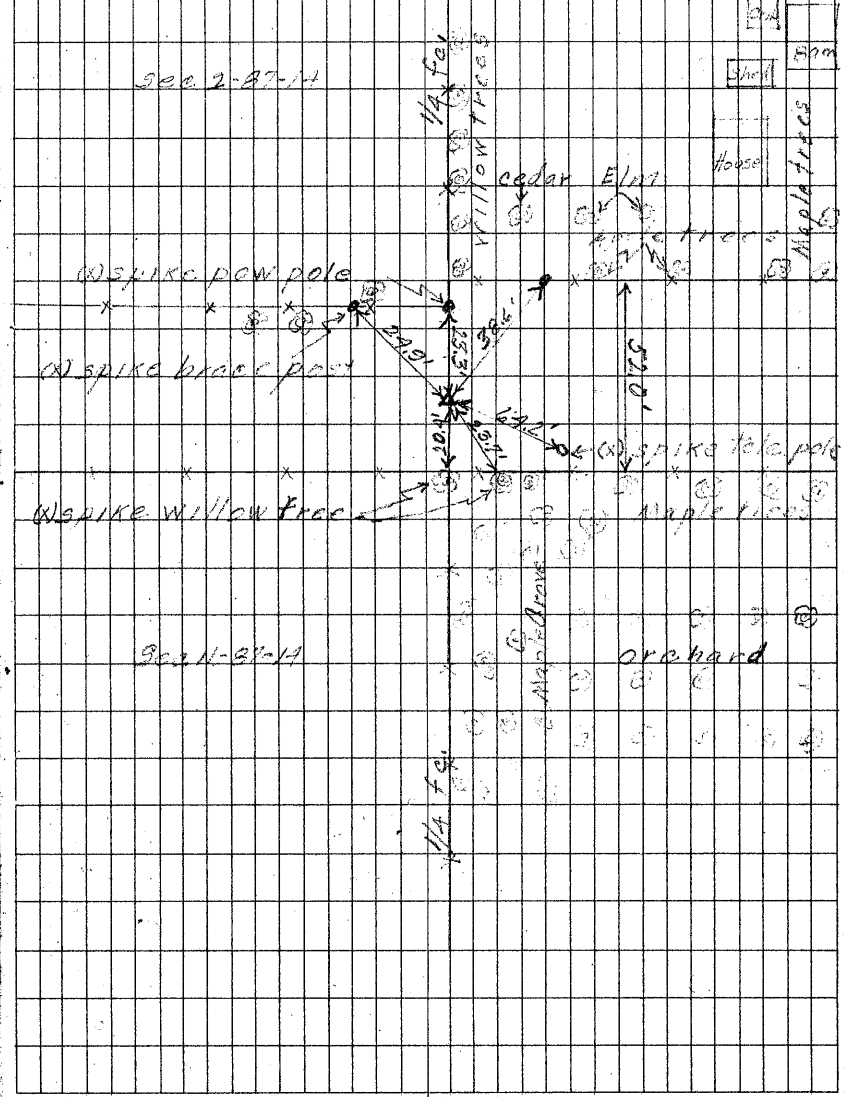
53+16.8 = N.E. cor. Sec. 11-87-14

N.W. cor. Sec. 11-87-14

August 24 1938

John M. Summit

Union-Boiler-Town



(x) spike pole

(x) spike brace post

(x) spike willow tree

cedar Elm

House

orchard

1/4 Sec

1/4 fc

Sec 11-87-14

Sec 2-87-14

80m

Shed

Maple trees