

N. on E side 5-90-14

50+1117 = Cor. Stone NE 5; 28.0' W.R.L.
1+88.2 = fa. E & W; Cor. post 23.3' W.R.L.
48+22.92 = "C"; pt on R.L. Triangulation

$$376.3 \times 0.97246 = 365.9'$$

44+520 = N. on R.L. Triangulation pt.
90° Rt. 376.3' Labc = 44°-11'-30"

$$39+65.9 = 3\frac{1}{4} \text{ fa. W.}$$

1314.9

26+50.5 = E $\frac{1}{4}$ 5-90-14 9.2' W.R.L.

1305.5

13+95.0 = $\frac{1}{4}$ fa. E

0+32.3 = N ROW E & W

0+00 = NE 8-90-14; 13.8 W.R.L.

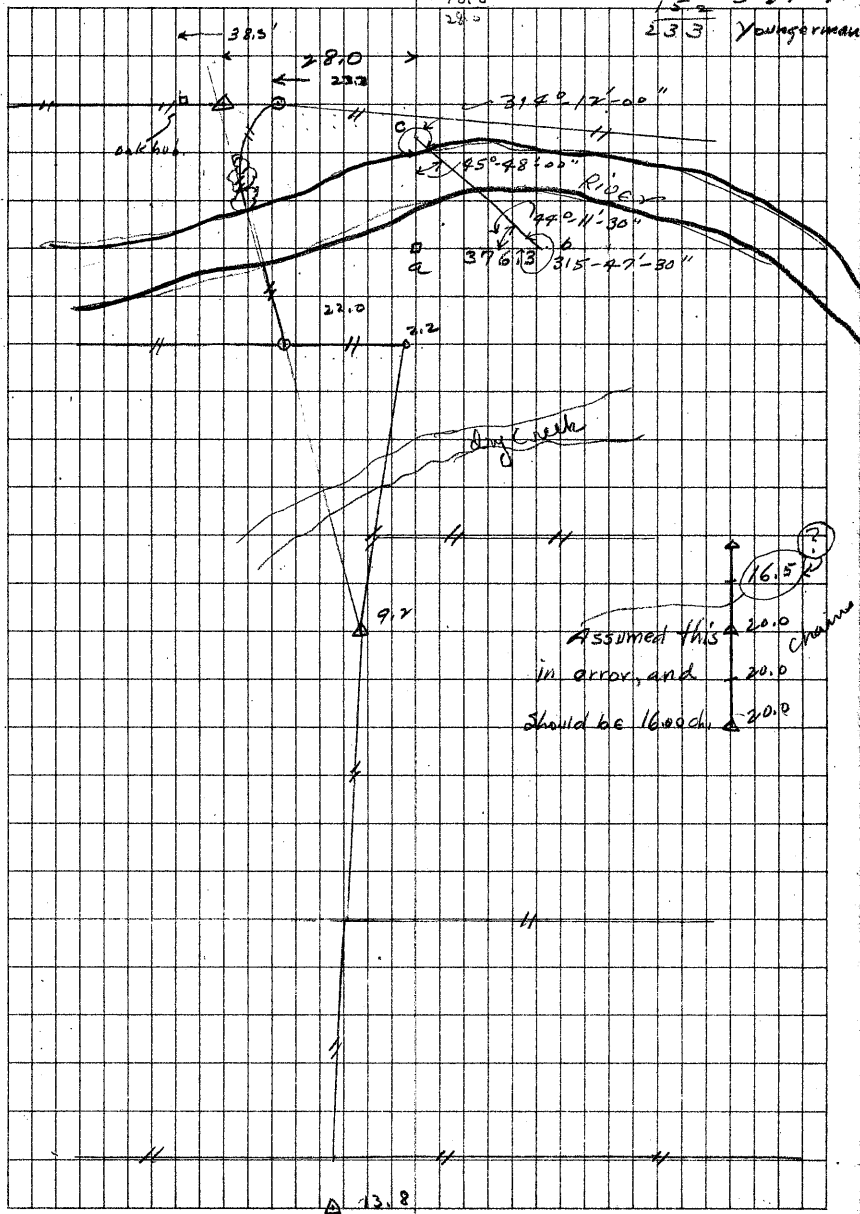
525.4
18.5

5264.5
47.3
15.2

✓ 28

385
10.5
28.0

38.5 3-27-41
15.2
23.3 Youngerman



Assumed this 20.0
in error, and 20.0
Should be 16.00 chain 20.0

13.8