

## ESTABLISHMENT RECORD

Road North of section  
Road No. 103 - 308  
Recorded Road Calendar  
Book 1 & B Page 217 & 59  
Established width 66 feet

Road East of section  
Road No. 409  
Recorded Road Calendar  
Book B Page 167  
Established width 66 feet

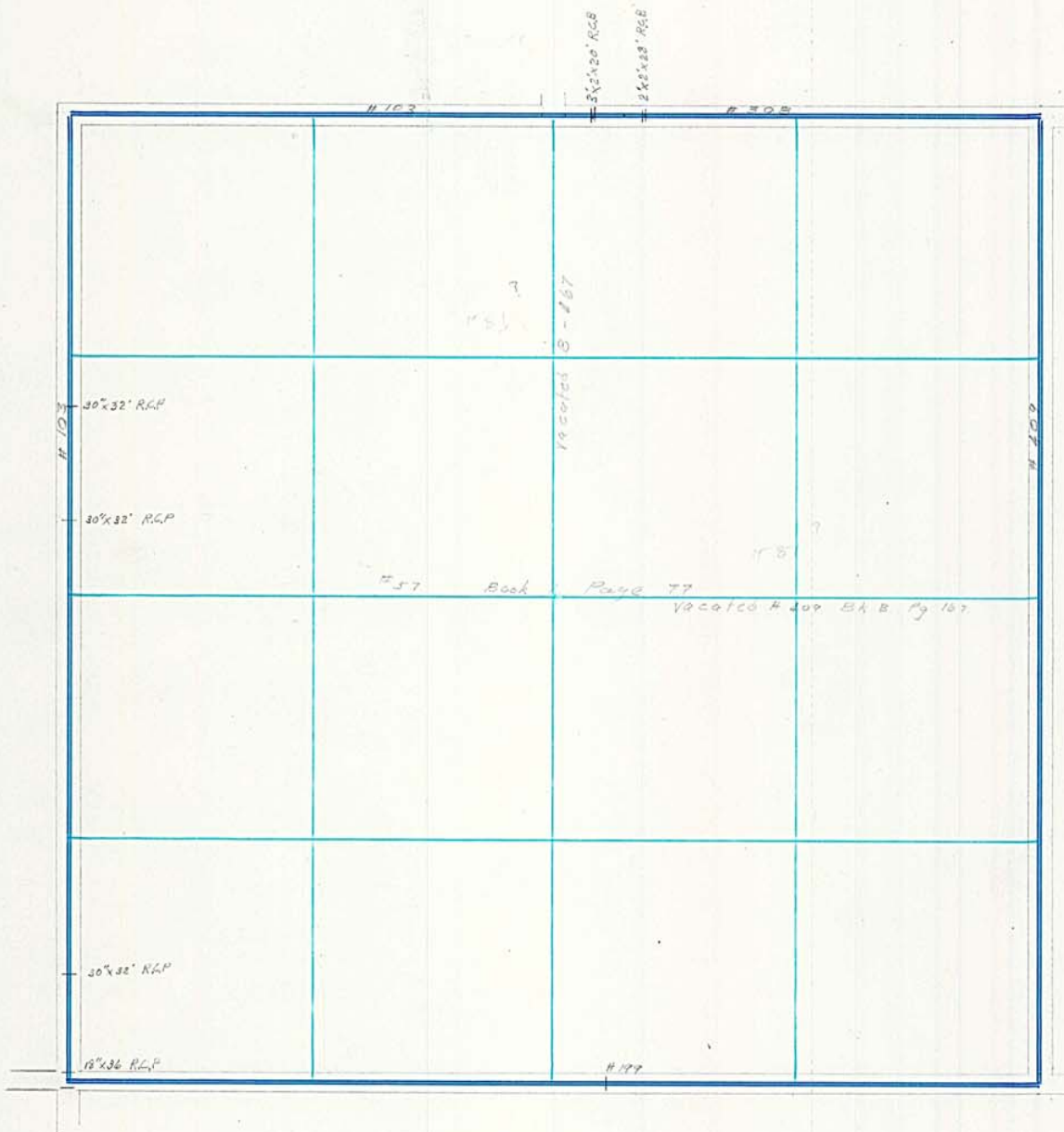
Road west of section  
Road No. 103  
Recorded Road Calendar  
Book 1 Page 217  
Established width 66 feet  
*Pages 163-165-169-173-208-213-217-263*

## CONSTRUCTION RECORD

ITEM	YEAR	QUANTITIES
Grading	W $\frac{1}{2}$ 1940	6,917 CY
Surfacing	4 $\frac{1}{2}$ Mi - 1956 - 4" 5A, 4" 8S, dbl seal	
	1956 - 3 $\frac{1}{2}$ " Super B, 1967 Shoulders, 1970 seal	

ITEM	YEAR	QUANTITIES
Grading		
Surfacing		

ITEM	YEAR	QUANTITIES
Grading	1940	12657
Surfacing		



## BRIDGE RECORD

Bridge \_\_\_\_\_  
Size \_\_\_\_\_  
Spans \_\_\_\_\_  
Floor \_\_\_\_\_  
Stringers \_\_\_\_\_  
Abut. \_\_\_\_\_  
Piers \_\_\_\_\_  
Year built \_\_\_\_\_  
Drainage area \_\_\_\_\_  
Highwater \_\_\_\_\_

Bridge \_\_\_\_\_  
Size \_\_\_\_\_  
Spans \_\_\_\_\_  
Floor \_\_\_\_\_  
Stringers \_\_\_\_\_  
Abut. \_\_\_\_\_  
Piers \_\_\_\_\_  
Year built \_\_\_\_\_  
Drainage area \_\_\_\_\_  
Highwater \_\_\_\_\_

Bridge \_\_\_\_\_  
Size \_\_\_\_\_  
Spans \_\_\_\_\_  
Floor \_\_\_\_\_  
Stringers \_\_\_\_\_  
Abut. \_\_\_\_\_  
Piers \_\_\_\_\_  
Year built \_\_\_\_\_  
Drainage area \_\_\_\_\_  
Highwater \_\_\_\_\_