

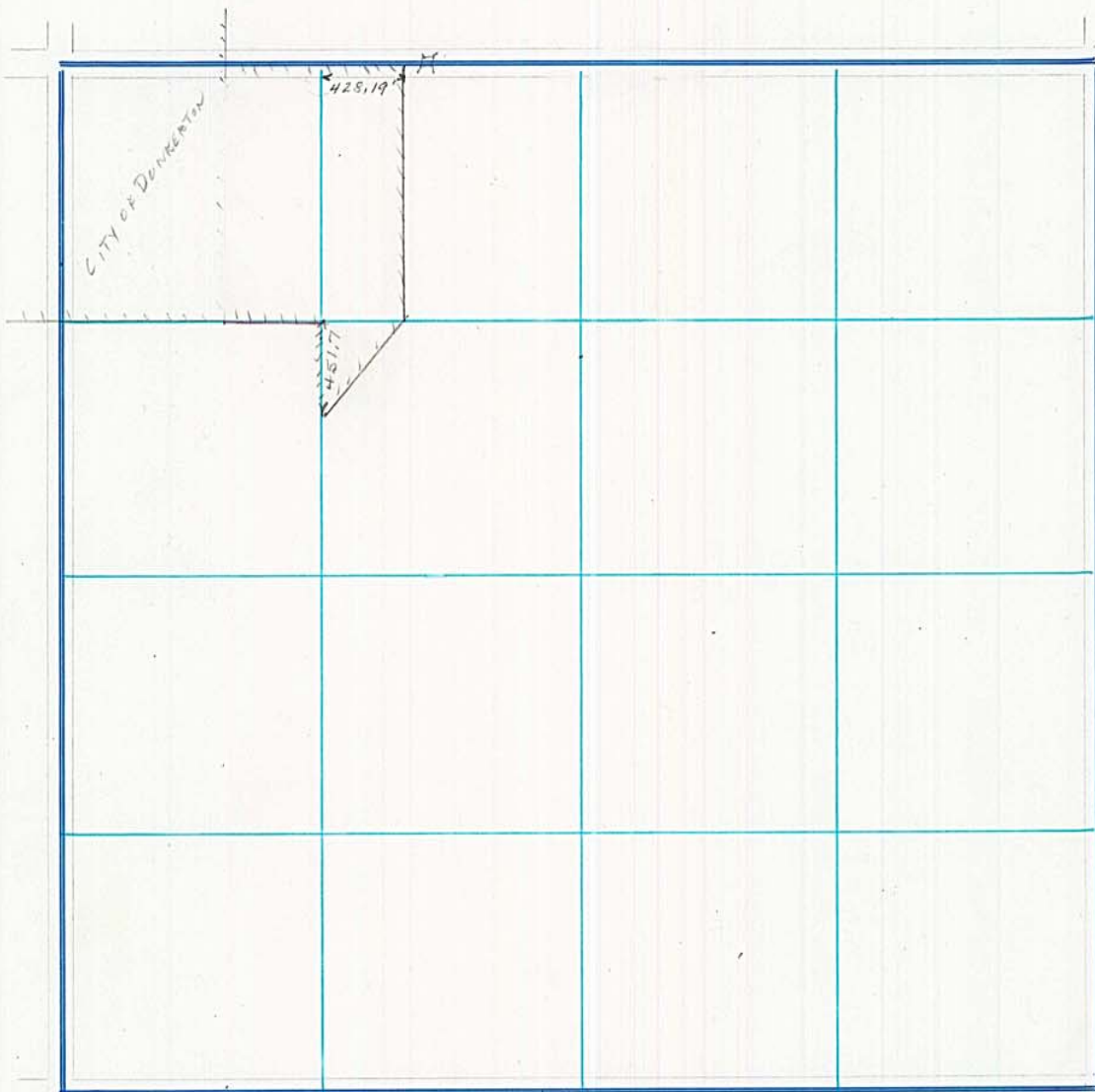
### ESTABLISHMENT RECORD

Road North of section  
Road No. 37  
Recorded Road Calendar  
Book 1 Page  
Established width 66 feet  
# 9 - 1 - 10 - 13 - 17 - 197  
# 112 - 1 - 86

Road East of section  
Road No. 519  
Recorded Road Calendar  
Book B Page 301  
Established width 3 rods.

Road \_\_\_\_\_  
Road No. \_\_\_\_\_  
Recorded \_\_\_\_\_  
Book \_\_\_\_\_ Page \_\_\_\_\_  
Established width \_\_\_\_\_

## CONSTRUCTION RECORD

[illegible][illegible][illegible]

## BRIDGE RECORD

Bridge 09010-0.35M. E NW Cor  
Size 14x24'  
Spans 1  
Floor conc  
Stringers TB  
Abut. conc.  
Piers \_\_\_\_\_  
Year built 1964  
Drainage area \_\_\_\_\_  
Highwater \_\_\_\_\_

Bridge \_\_\_\_\_  
Size \_\_\_\_\_  
Spans \_\_\_\_\_  
Floor \_\_\_\_\_  
Stringers \_\_\_\_\_  
Abut. \_\_\_\_\_  
Piers \_\_\_\_\_  
Year built \_\_\_\_\_  
Drainage area \_\_\_\_\_  
Highwater \_\_\_\_\_

Bridge \_\_\_\_\_  
Size \_\_\_\_\_  
Spans \_\_\_\_\_  
Floor \_\_\_\_\_  
Stringers \_\_\_\_\_  
Abut. \_\_\_\_\_  
Piers \_\_\_\_\_  
Year built \_\_\_\_\_  
Drainage area \_\_\_\_\_  
Highwater \_\_\_\_\_