

Jeffrey P. Helland, 1107 Technology Parkway, Cedar Falls, Iowa 50613-6951, (319)-266-0161

UNITED STATES PUBLIC LAND SURVEY CORNER CERTIFICATE  
OF

LAND SURVEY MONUMENTS SITUATED IN SECTION NO. 9, TOWNSHIP NO. 90 NORTH, RANGE  
NO. 14 WEST OF THE FIFTH PRINCIPAL MERIDIAN, BLACK HAWK COUNTY, IOWA.  
PREVIOUSLY RECORDED IN N/A

(SHOW REASON FOR PREPARING THIS CERTIFICATE, THE EVIDENCE AND DETAILED PROCEDURES USED IN ESTABLISHING THE  
CORNER POSITIONS AND MONUMENTATION FOUND OR PLACED.)

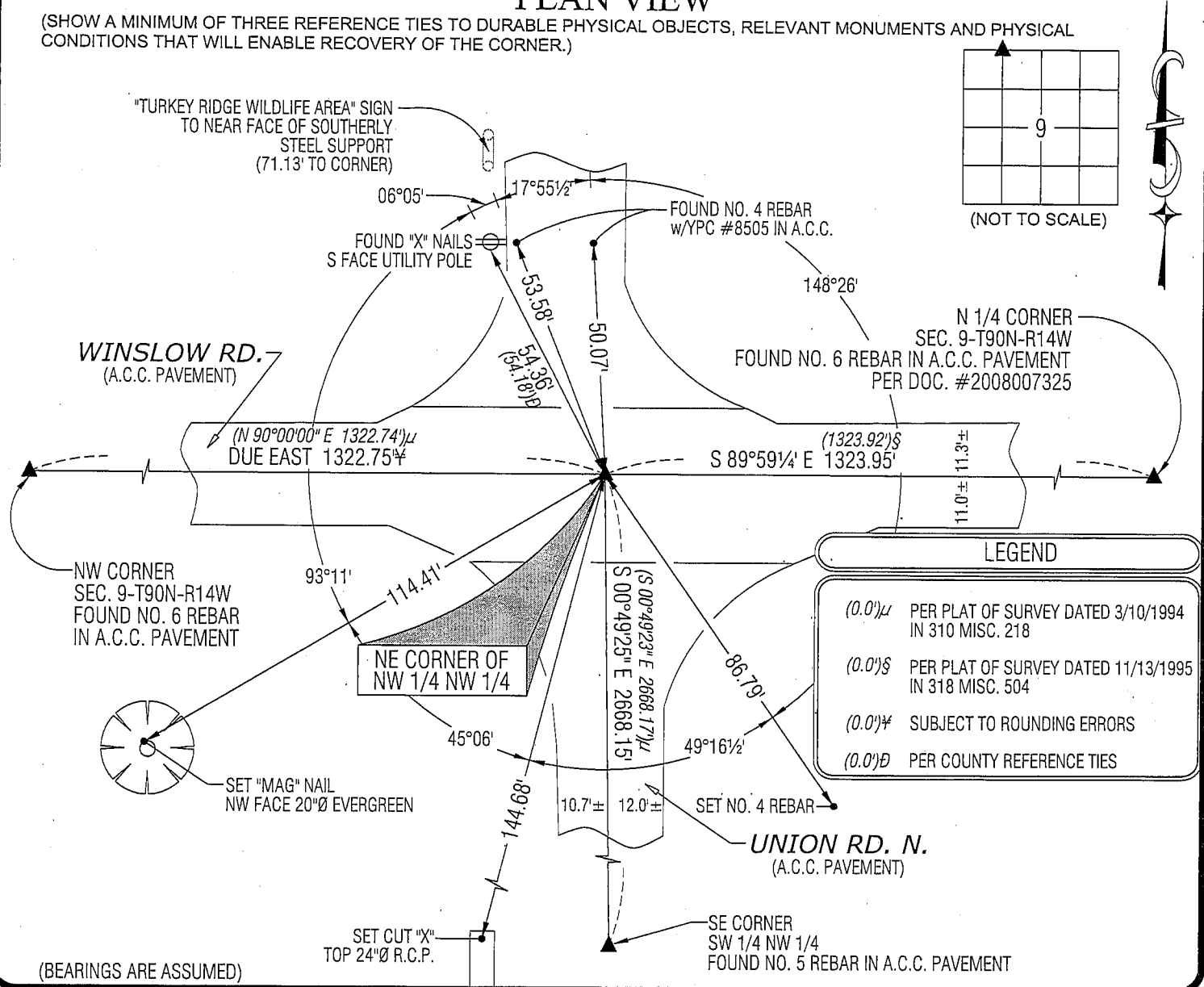
MONUMENT DESCRIPTION AND REMARKS:

NO USPLSCC ON FILE. SURVEY COMPLETED IN THE NW 1/4 OF SEC. 9-T90N-R14W.

→ **NE CORNER NW 1/4 NW 1/4:** BLACK HAWK COUNTY ENGINEER'S REFERENCE TIES (UNDATED) DO NOT STATE WHAT WAS  
SET OR FOUND. PLAT OF SURVEY DATED 8/2/1994 IN 312 MISC. 127 CALLS FOR [FOUND PIN]. PLAT OF SURVEY DATED  
3/10/1994 IN 310 MISC. 218 CALLS FOR [FO. PIN]. PLAT OF SURVEY DATED 11/13/1995 IN 318 MISC. 504 CALLS FOR  
[FOUND PIN]. FOUND NO. 5 REBAR IN CENTERLINE JOINT OF A.C.C. PAVEMENT (E-W).

PLAN VIEW

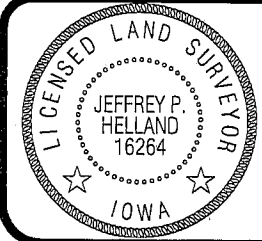
(SHOW A MINIMUM OF THREE REFERENCE TIES TO DURABLE PHYSICAL OBJECTS, RELEVANT MONUMENTS AND PHYSICAL  
CONDITIONS THAT WILL ENABLE RECOVERY OF THE CORNER.)



(BEARINGS ARE ASSUMED)

**HES** HELLAND ENGINEERING & SURVEYING, LTD.  
1107 Technology Parkway  
Cedar Falls, Iowa 50613-6951  
(319)-266-0161

SHINER = 8D NAIL & 1 5/16"Ø METAL SHINER  
BRASS TAG = 13/16"Ø BRASS TAG  
OPC = PLASTIC CAP (O=ORANGE, R=RED, Y=YELLOW)  
(00') RECORDED AS FILE NAME: 09-217C2.DWG



I hereby certify that this land surveying document was prepared  
and the related survey work was performed by me or under my  
direct personal supervision and that I am a duly licensed Land  
Surveyor under the laws of the State of Iowa.  
*Jeffrey P. Helland 9/1/09*  
Jeffrey P. Helland  
License Number 16264  
My license renewal date is December 31, 2009.  
All pages or sheets are covered by this seal except:

LIST CORNERS TO BE INDEXED			
CORNER	SECTION	TOWNSHIP	RANGE
NE COR. NW 1/4 NW 1/4	9	90N	14W
SE COR. SW 1/4 SW 1/4	4	90N	14W
SW COR. SE 1/4 SW 1/4	4	90N	14W
NW COR. NE 1/4 NW 1/4	9	90N	14W

Rec. 1