

Jeffrey P. Helland, 1107 Technology Parkway, Cedar Falls, Iowa 50613-6951, (319)-266-0161

# UNITED STATES PUBLIC LAND SURVEY CORNER CERTIFICATE OF

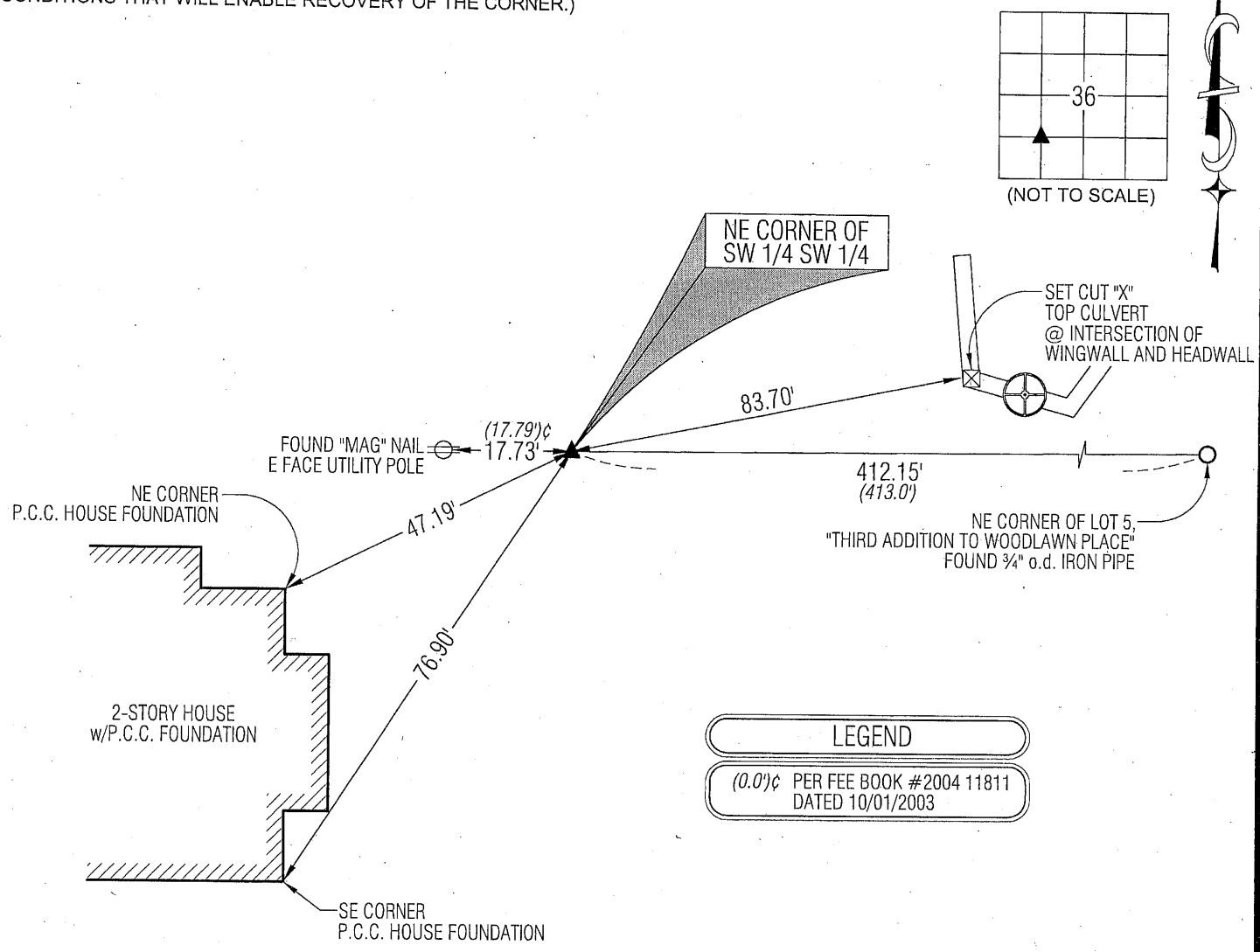
LAND SURVEY MONUMENTS SITUATED IN SECTION NO. 36, TOWNSHIP NO. 90 NORTH, RANGE NO. 14 WEST OF THE FIFTH PRINCIPAL MERIDIAN, BLACK HAWK COUNTY, IOWA.  
PREVIOUSLY RECORDED IN FEE BOOK #2004 11811

(SHOW REASON FOR PREPARING THIS CERTIFICATE, THE EVIDENCE AND DETAILED PROCEDURES USED IN ESTABLISHING THE CORNER POSITIONS AND MONUMENTATION FOUND OR PLACED.)

MONUMENT DESCRIPTION AND REMARKS: USPLSCC FEE BOOK #2004 11811 REFERENCE TIES HAVE CHANGED. SURVEY COMPLETED IN THE SW 1/4 OF SEC. 36-T90N-R14W.  
NE CORNER SW 1/4 SW 1/4: "THIRD ADDITION TO WOODLAWN PLACE" DATED 7/2/1941 IN BOOK G PAGE 179 CALLS FOR [IRON STAKE] SHOWN TO BE SET AT THE NW CORNER OF ADDITION. USPLSCC FEE BOOK #2004 11811 DATED 10/01/2003 CALLS FOR [SET 1/2"x30" REBAR WITH ORANGE CAP #14677] [RESET USING PROPERTY PINS FOUND IN HOME ACRES ADDITION AND IN 1ST ADDITION TO THRIFT ACRES & E 1/4 AND W 1/4 CORNERS.], NOTE THAT THESE TIES WERE SWITCHED WITH TIES FOR THE NE CORNER OF THE NW 1/4 SW 1/4 ON THE USPLSCC FEE BOOK #2004 11811. FOUND NO. 4 REBAR w/ILLEGIBLE OPC CORRESPONDING TO ONE REMAINING TIE. ALL OTHER TIES ARE OBLITERATED. ESTABLISHED NEW REFERENCE TIES AND UTILIZED SAID REBAR AS CORNER.

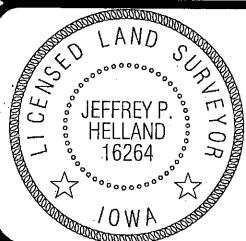
## PLAN VIEW

(SHOW A MINIMUM OF THREE REFERENCE TIES TO DURABLE PHYSICAL OBJECTS, RELEVANT MONUMENTS AND PHYSICAL CONDITIONS THAT WILL ENABLE RECOVERY OF THE CORNER.)



**HES** HELLAND ENGINEERING & SURVEYING, LTD.  
1107 Technology Parkway  
Cedar Falls, Iowa 50613-6951  
(319)-266-0161

SHINER = 8D NAIL & 1 5/16"Ø METAL SHINER  
BRASS TAG = 13/16"Ø BRASS TAG  
OPC = PLASTIC CAP (O=ORANGE, R=RED, Y=YELLOW)  
(00') RECORDED AS FILE NAME: 09-130C2.DWG



I hereby certify that this land surveying document was prepared and the related survey work was performed by me or under my direct personal supervision and that I am a duly licensed Land Surveyor under the laws of the State of Iowa.  
*Jeffrey P. Helland 1/6/10*  
Jeffrey P. Helland  
License Number 16264  
My license renewal date is December 31, 2011.  
All pages or sheets are covered by this seal except:

LIST CORNERS TO BE INDEXED			
CORNER	SECTION	TOWNSHIP	RANGE
NE COR. SW 1/4 SW 1/4	36	90N	14W
SE COR. NW 1/4 SW 1/4	36	90N	14W
SW COR. NE 1/4 SW 1/4	36	90N	14W
NW COR. SE 1/4 SW 1/4	36	90N	14W