

I  
P  
Z

Document Number: 2007016507  
Date: Jan 30, 2007 4:30:00 pm  
Aud Fee: 0.00 Rec Fee: 5.00  
Trans Tax: 0.00 Rec Management Fee: 1.00  
E-Com Fee: 1.00 Non-Standard Page Fee: 0.00  
Filed for record in Black Hawk County, Iowa  
Judith A. McCarthy, County Recorder

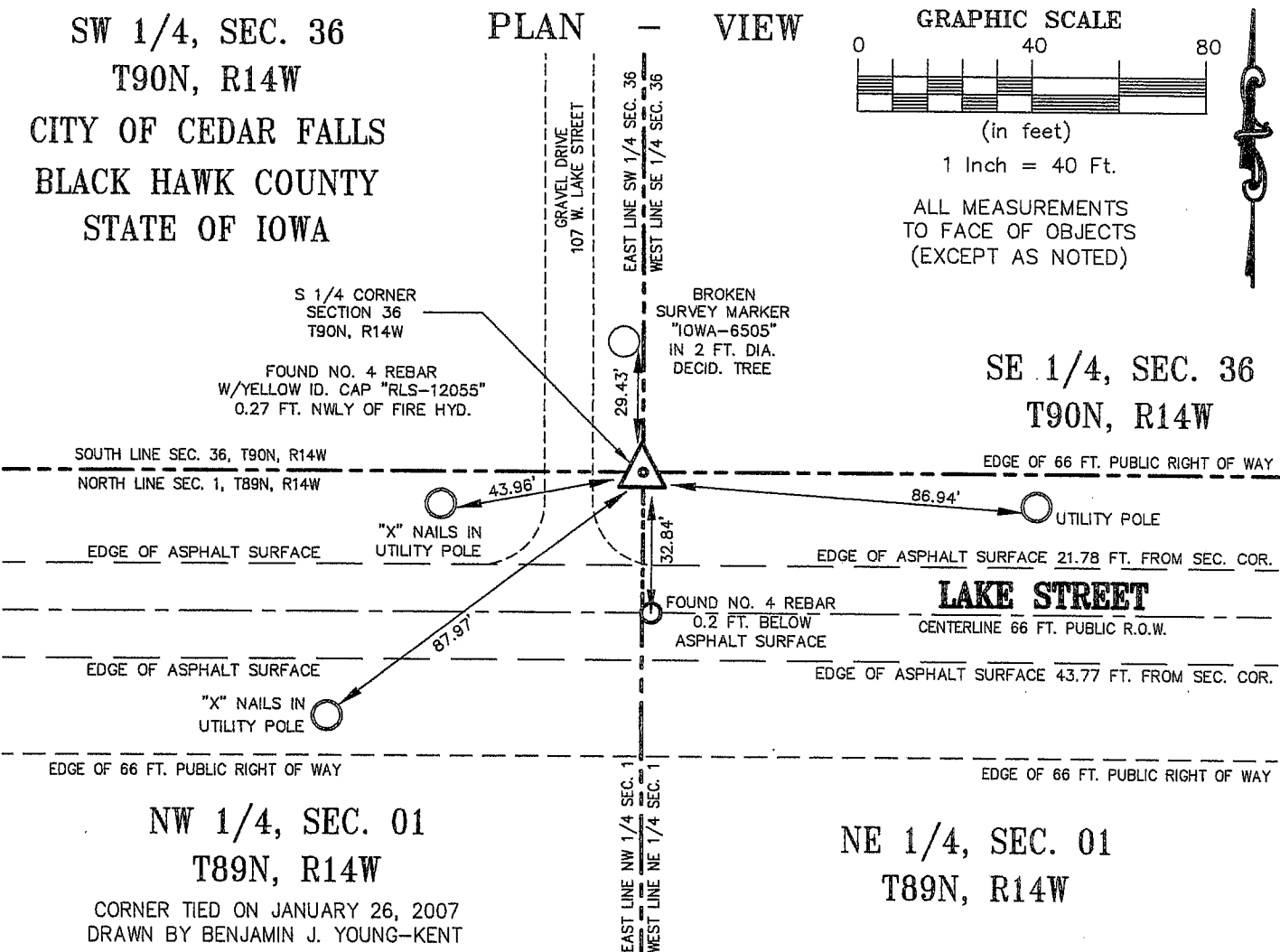
Kirk D. Eschliman, P.L.S. Iowa Lic. No. 9961, 723 Broadway Street, Waterloo, Iowa 50703 - Phone: 319-234-0509

# UNITED STATES PUBLIC LAND SURVEY CORNER CERTIFICATE OF

LAND SURVEY MONUMENTS SITUATED IN SECTION THIRTY-SIX (36), TOWNSHIP NINETY (90) NORTH  
RANGE FOURTEEN (14) WEST, OF THE FIFTH PRINCIPAL MERIDIAN, BLACK HAWK COUNTY, IOWA.  
PREVIOUSLY RECORDED IN (NOT PREVIOUSLY RECORDED) (BOOK, PAGE, DOCUMENT NUMBER, ETC.) IN THE COUNTY RECORDER'S OFFICE.

(SHOW REASON FOR PREPARING THIS CERTIFICATE, THE EVIDENCE AND DETAILED PROCEDURES USED IN ESTABLISHING THE CORNER POSITIONS AND MONUMENTATION FOUND OR PLACED.)

MONUMENT DESCRIPTION AND REMARKS:  
CURRENT SECTION CORNER CERTIFICATE NOT ON FILE IN THE BLACK HAWK COUNTY RECORDER'S OFFICE.  
FOUND NUMBER FOUR REBAR WITH YELLOW ID. CAP "RLS-12055" 0.27 FEET NORTHWESTERLY OF FIRE HYDRANT.  
LOCATED BASED ON CONVERSATION WITH R. ALLEN DIETZ, R.L.S., WHO SET THE MONUMENT CIRCA 1995.  
MONUMENT USED IN REFERENCED FIELD SURVEY IN SW 1/4 OF SECTION 23.



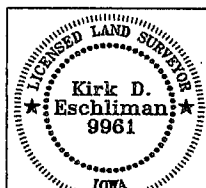
I HEREBY CERTIFY THAT THIS LAND SURVEYING DOCUMENT  
WAS PREPARED AND RELATED SURVEY WORK WAS  
PERFORMED BY ME OR UNDER MY DIRECT PERSONAL  
SUPERVISION AND THAT I AM A DULY LICENSED LAND  
SURVEYOR UNDER THE LAWS OF THE STATE OF IOWA.

*Kirk D. Eschliman* DATE: 01/29/2007

KIRK D. ESCHLIMAN, P.L.S. IOWA LIC. NO. 9961  
MY LICENSE RENEWAL DATE IS DECEMBER 31, 2007  
PAGES OR SHEETS COVERED BY THIS SIGNATURE & SEAL: SHEET 1 OF 1

FOR: GUILLERMO F. NODARSE  
412 W. DUNKERTON ROAD  
CEDAR FALLS, IOWA 50613

REQ. BY: MARDY HOLST, AHTS ARCHITECTS  
WATERLOO, IOWA 50703



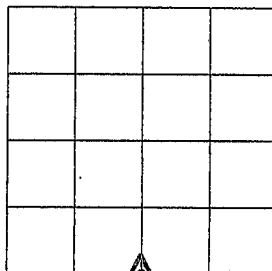
KESS & ASSOCIATES, INC.  
PROFESSIONAL LAND SURVEYORS - 723 BROADWAY, WATERLOO, IOWA 50703-5811  
DATE: 01/29/2007 C.A.D.D. FILE: 06C28SCC3.DWG PROJECT NO.: 06C28

List of corners to be indexed:

Corner	Section	Township	Range
S 1/4	36	T90N	R14W

R14W

T90N



SECTION 36