

Scott A. Steinfadt

BLACK HAWK COUNTY RECORDER

S & S LAND SURVEYING INC PO BOX 266 313 S CHERRY STE B SHELL ROCK IA 50670

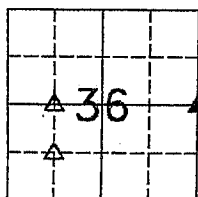
PREPARED BY - S & S LAND SURVEYING, INC., 313 S. CHERRY, SUITE B, PO BOX 266, SHELL ROCK, IOWA 50670 - PHONE 319-885-4244

UNITED STATES PUBLIC LAND SURVEY CORNER CERTIFICATE

OF

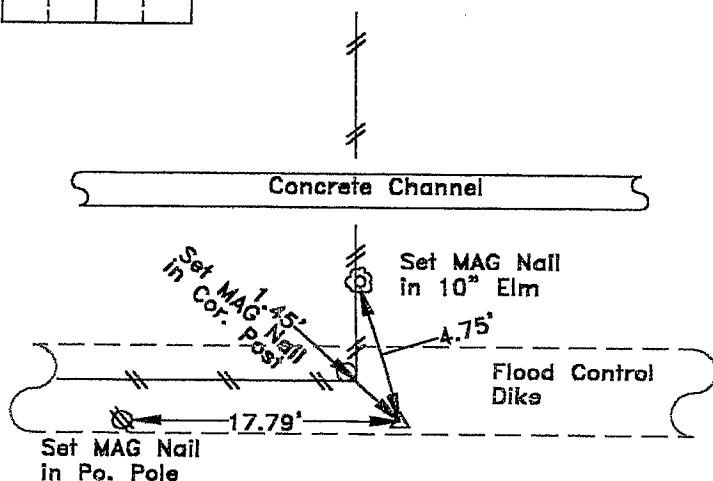
Land Survey Monuments situated in Section 36, Township 90 North, Range 14 West, of the Fifth Principal Meridian, Black Hawk County, Iowa.
Previously recorded In Book N/A, Page N/A.

Corners were located for land survey in the NW1/4, SW1/4. East 1/4 Corner was located using information obtained from the Black Hawk County Engineers Office. NE & SE Corners of NW1/4, SW1/4 was reset using property pins found in Home Acres Addition and in 1st Addition to Thrift Acres & E1/4 and W1/4 Corners.

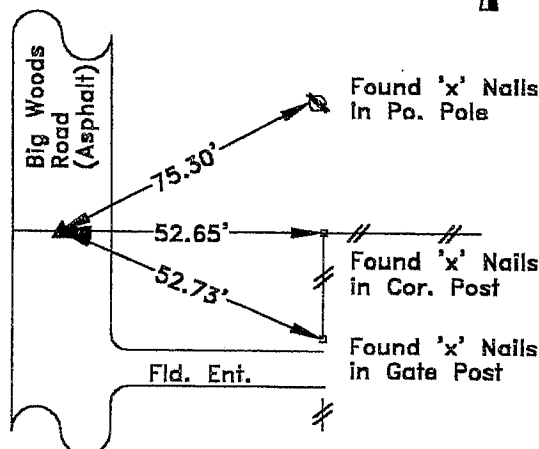


PLAN-VIEW

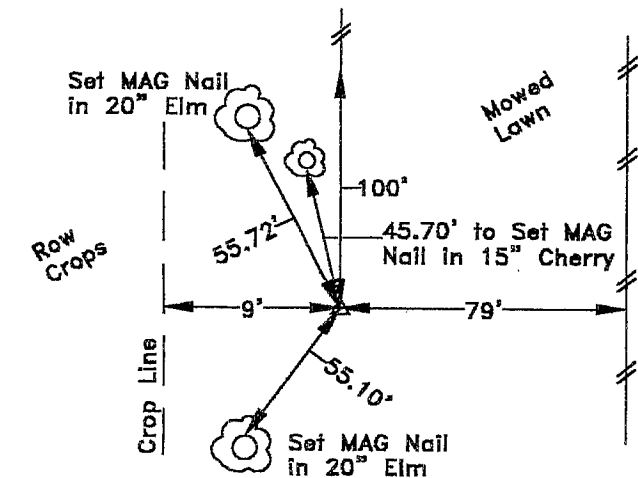
NO SCALE



Northeast Corner - NW1/4, SW1/4
Set 1/2"x30" Rebar with Orange Cap #14677



East 1/4 Corner
Found 3/4" Iron Pin, 0.1' Deep in Asphalt



Southeast Corner - NW1/4, SW1/4
Set 1/2"x30" Rebar with Orange Cap #14677

I hereby certify that this land surveying document was prepared and the related survey work was performed by me or under my direct personal supervision and that I am a duly Licensed Professional Land Surveyor under the laws of the State of Iowa.

Scott A. Steinfadt

Scott A. Steinfadt, P.L.S.

10/01/03

date

Iowa License No. 14677
My License Renewal Date: Dec. 31, 2004.
Pages or sheets covered by this seal:
This page only.



S & S
LAND SURVEYING, INC.

313 S. CHERRY, SUITE 'B'
PO BOX 266
SHELL ROCK, IOWA 50670
(319) 885-4244

List Corners to be Indexed

Corners	Section	Twp	Range
East 1/4	36	90 North	14 West
Northeast NW1/4, SW1/4	36	90 North	14 West
Southeast NW1/4, SW1/4	36	90 North	14 West