

Kirk D. Eschliman, P.L.S. Iowa Lic. No. 9961, 723 Broadway Street, Waterloo, Iowa 50703 - Phone: 319-234-0509

UNITED STATES PUBLIC LAND SURVEY CORNER CERTIFICATE
OF

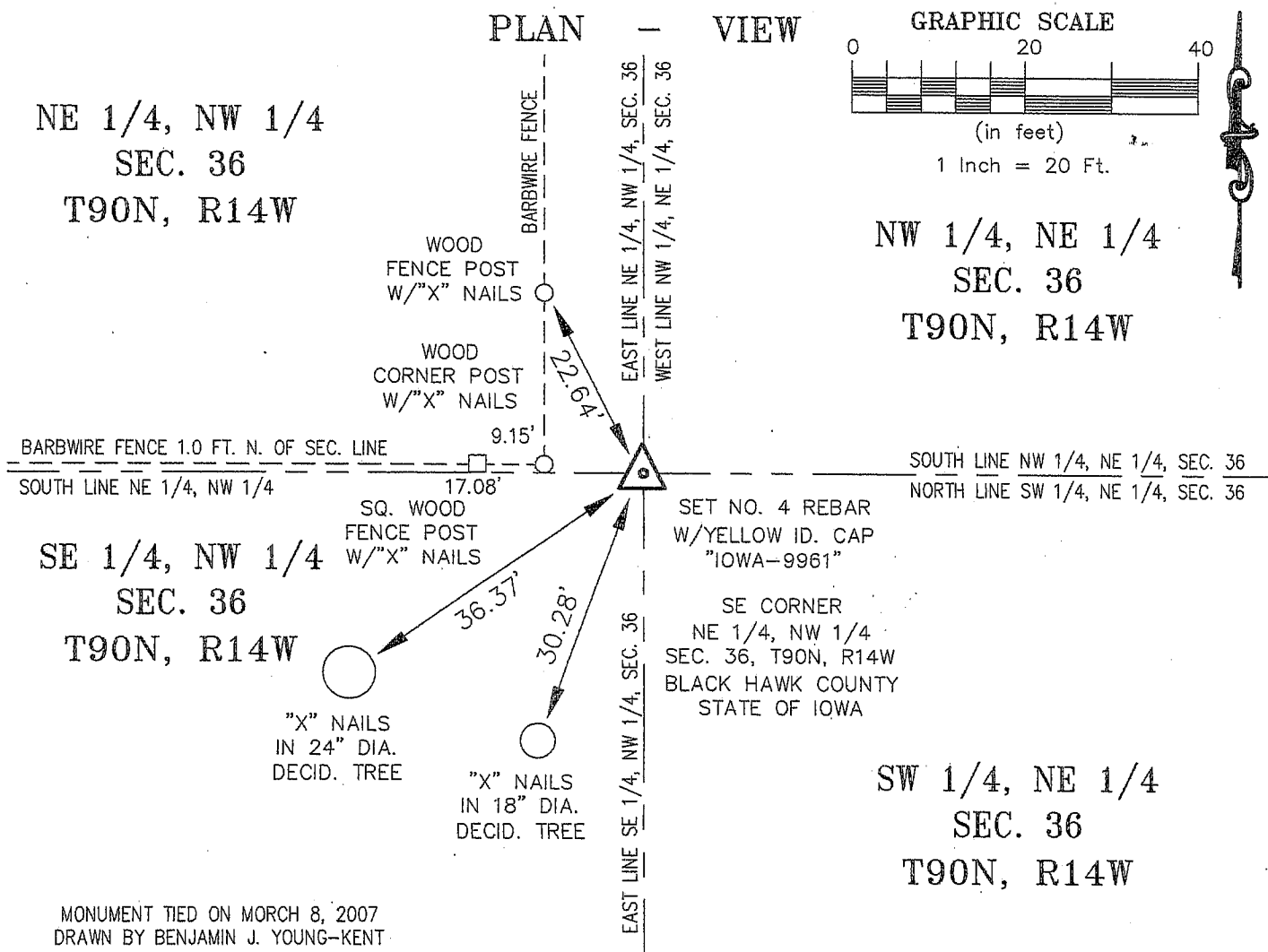
LAND SURVEY MONUMENTS SITUATED IN SECTION THIRTY-SIX (36), TOWNSHIP NINETY (90) NORTH
RANGE FOURTEEN (14) WEST, OF THE FIFTH PRINCIPAL MERIDIAN, BLACK HAWK COUNTY, IOWA.
PREVIOUSLY RECORDED IN DOC. NO. 2007014795 (BOOK, PAGE, DOCUMENT NUMBER, ETC.) IN THE COUNTY RECORDER'S OFFICE.

(SHOW REASON FOR PREPARING THIS CERTIFICATE, THE EVIDENCE AND DETAILED PROCEDURES USED IN ESTABLISHING THE CORNER POSITIONS AND MONUMENTATION FOUND OR PLACED.)

MONUMENT DESCRIPTION AND REMARKS:

THIS SECTION CORNER CERTIFICATE IS BEING FILED AS A CORRECTION TO DOCUMENT NUMBER 2007014795.

SET NO. 4 REBAR WITH YELLOW ID. CAP "IOWA-9961." MONUMENT ESTABLISHED BASED ON SECTION
BREAKDOWN FOR REFERENCED FIELD SURVEY.



I HEREBY CERTIFY THAT THIS LAND SURVEYING DOCUMENT
WAS PREPARED AND RELATED SURVEY WORK WAS
PERFORMED BY ME OR UNDER MY DIRECT PERSONAL
SUPERVISION AND THAT I AM A DULY LICENSED LAND
SURVEYOR UNDER THE LAWS OF THE STATE OF IOWA.

Kirk D. Eschliman DATE: 03/13/2007
KIRK D. ESCHLIMAN, P.L.S. IOWA LIC. NO. 9961
MY LICENSE RENEWAL DATE IS DECEMBER 31, 2007
PAGES OR SHEETS COVERED BY THIS SIGNATURE & SEAL: SHEET 1 OF 1

FOR: GUILLERMO F. NODARSE
412 W. DUNKERTON ROAD
CEDAR FALLS, IOWA 50613

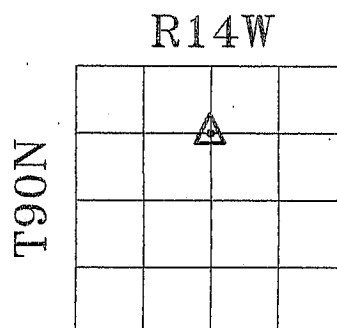
REQ. BY: MARDY HOLST, AHTS ARCHITECTS
WATERLOO, IOWA 50703



KESS & ASSOCIATES, INC.
PROFESSIONAL LAND SURVEYORS : 723 BROADWAY, WATERLOO, IOWA 50703-5811
DATE: 03/13/2007 C.A.D.D. FILE06C28SCC2R.DWG PROJECT NO.: 06C28

List of corners to be indexed:

Corner	Section	Township	Range
SE COR.	36	T90N	R14W
NE 1/4, NW 1/4			



SECTION 36