

PROOF FILED FOR RECORD DEC 8 2005 AT 4:00 P.M. FEE 1-5.00/-1.00/

COMPARED

Patricia A. Lero

BLACK HAWK COUNTY RECORDER

ENV WAYNE CLAASSEN ENGINEERING AND SURVEYING PO BOX 898 WATERLOO IA 50704

WAYNE CLAASSEN ENGINEERING AND SURVEYING, INC.
P.O. BOX 898 WATERLOO, IOWA 50704-0898PHONE: (VOICE) 319-235-6294
(FAX) 319-235-0028

UNITED STATES PUBLIC LAND SURVEY CORNER CERTIFICATE

Land Survey Monuments situated in Section 35, Township 90 North, Range 14 West, of the Fifth Principal Meridian, Black Hawk County, Iowa.Previously recorded in _____ in County Recorder's Office.
(book, page, document number, etc.)

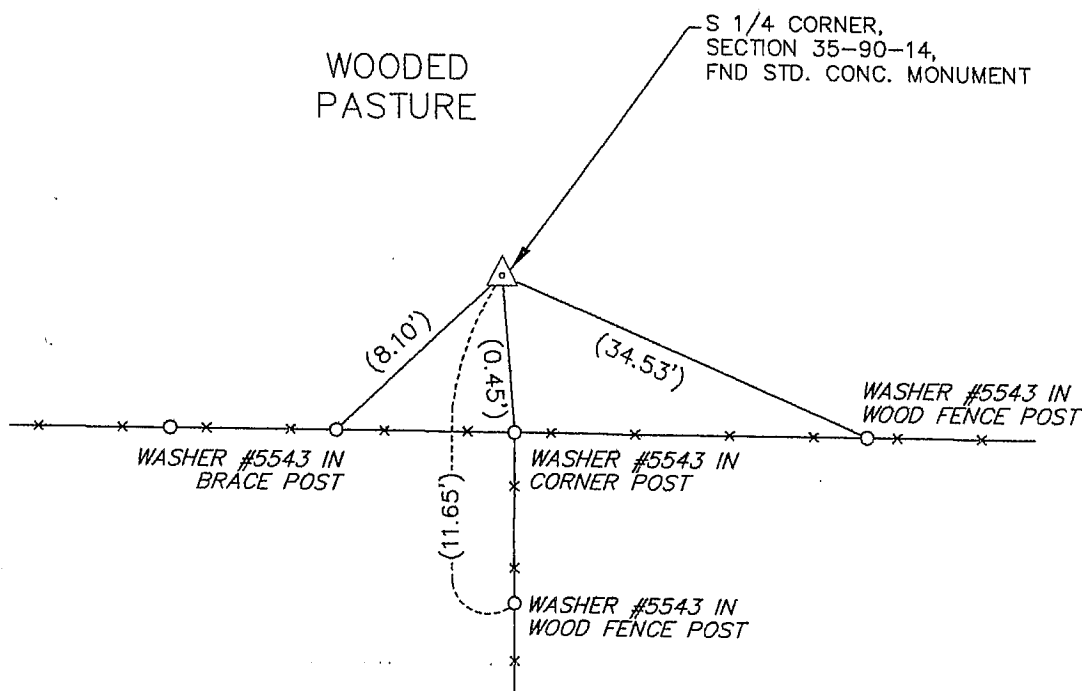
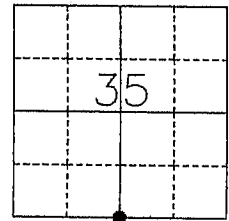
(Show reason for preparing this certificate, the evidence and detailed procedures used in establishing the corner positions and monumentation found or placed.)

Monument Description and Remarks _____

SW. Corner: No certificate on file. Found Std. Concrete Monument from 1979 ties of W.H.K. & S. IDOT I-380 Relocation Project.

PLAN - VIEW

(Show a minimum of three reference ties to durable physical objects, relevant monuments and physical conditions that will enable recovery of the corner.)



SNAG CREEK LOWLANDS

FB. 629, PG. 54

I hereby certify that this land surveying document was prepared and the related survey work was performed by me or under my direct personal supervision and that I am a duly Licensed Land Surveyor under the laws of the State of Iowa.

Signature: *David L. Scheil*
David L. Scheil, L.S.Date: DEC. 07, 2005 Lic. No. 16775Pages or Sheets Covered by this Seal: THIS SHEET ONLY.

My license renewal date is December 31, 2006

SEAL

List Corners to be Indexed

Corners	Section	Twp	Range
S 1/4 CORNER,	35	90 N	14 W

