

INDEX 14
MARGIN
PROOF
COMPARE

BLACK HAWK COUNTY IOWA:SS
Filed for record APR 17, 2002 at
4:00 P.M. and recorded in Book _____
of _____ Page _____

028113

Paul H. Helland
FEE 1-5.00X
HELLAND ENGINEERING & SURVEYING LTD
RECORDER

Paul H. Helland, 1107 Technology Parkway, Cedar Falls, Iowa 50613-6951, (319)-266-0161

UNITED STATES PUBLIC LAND SURVEY CORNER CERTIFICATE OF

LAND SURVEY MONUMENTS SITUATED IN SECTION NO. 35, TOWNSHIP NO. 90 NORTH, RANGE
NO. 14 WEST OF THE FIFTH PRINCIPAL MERIDIAN, BLACK HAWK COUNTY, IOWA.
PREVIOUSLY RECORDED IN BOOK _____, PAGE _____.

(SHOW REASON FOR PREPARING THIS CERTIFICATE, THE EVIDENCE AND DETAILED PROCEDURES USED IN ESTABLISHING THE
CORNER POSITIONS AND MONUMENTATION FOUND OR PLACED.)

MONUMENT DESCRIPTION AND REMARKS:

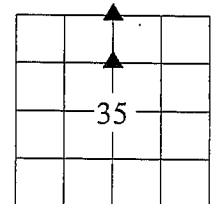
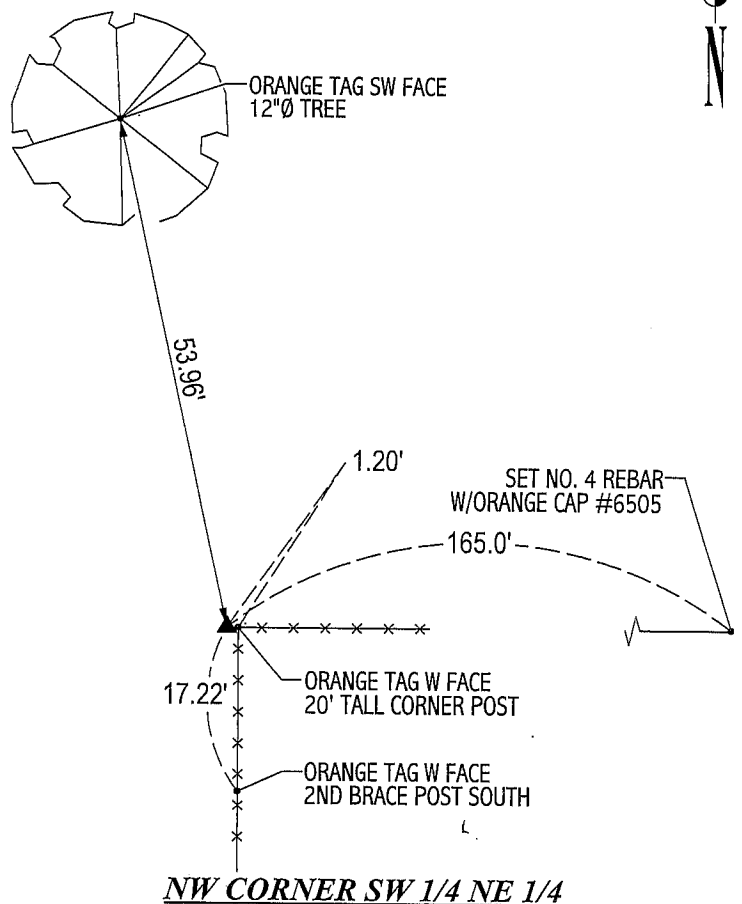
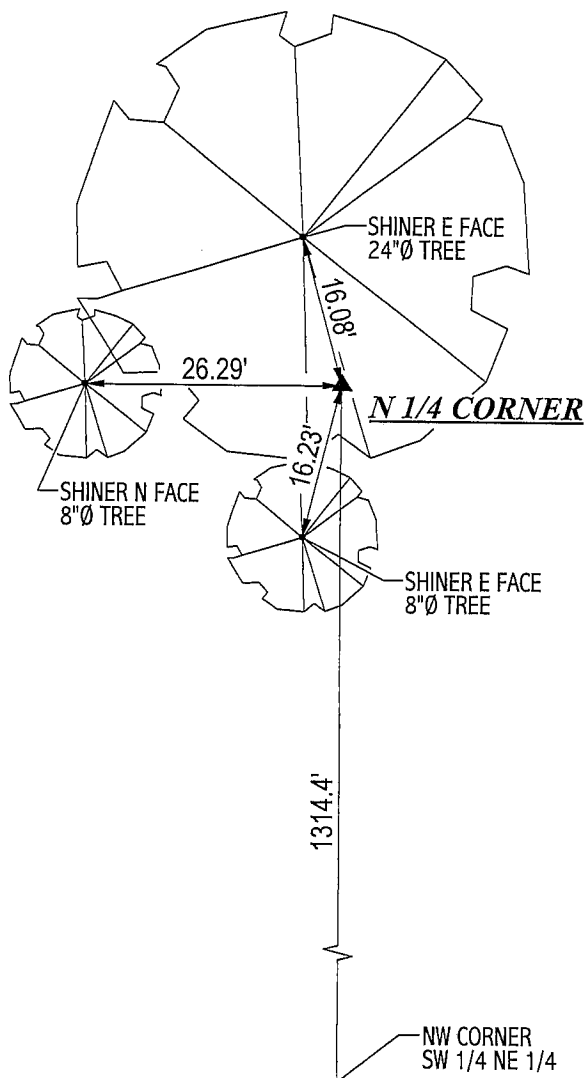
SURVEY DONE IN W 1/2 SW 1/4 NE 1/4 OF SEC. 35-T90N-R14W.

N 1/4 CORNER: ALL COUNTY ENGINEER REFERENCE TIES LOST. NO WPA CHAINING NOTES AVAILABLE. STARTED EXCAVATION @
APPROXIMATE INTERSECTION OF REMNANTS OF FENCES. FOUND CONCRETE MONUMENT W/BRASS CAP LABELED " 26 ",
1.5' DEEP. SET NO. 4 REBAR ON NORTH SIDE FOR MAGNETIC DETECTION. 35
SET 0.2' Ø x 8' LONG STEEL POST ON THE EAST SIDE OF CONCRETE MONUMENT.

NW CORNER OF SW 1/4 NE 1/4: NO COUNTY ENGINEER REFERENCE TIES EXIST. FOUND 1" PINCHED PIPE, 0.6' DEEP.

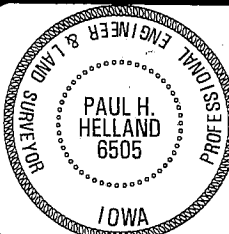
PLAN VIEW

(SHOW A MINIMUM OF THREE REFERENCE TIES TO DURABLE PHYSICAL OBJECTS, RELEVANT MONUMENTS AND PHYSICAL
CONDITIONS THAT WILL ENABLE RECOVERY OF THE CORNER.)



HELLAND ENGINEERING & SURVEYING, LTD.
1107 Technology Parkway
Cedar Falls, Iowa 50613-6951
(319)-266-0161

FILE NAME: 02-144CC.DRG



I hereby certify that this land surveying document was prepared
and the related survey work was performed by me or under my
direct personal supervision and that I am a duly licensed Land
Surveyor under the laws of the State of Iowa.

Paul H. Helland 4/17/02

Paul H. Helland
License Number 6505
My license renewal date is December 31, 2003.
All pages or sheets are covered by this seal except:

LIST CORNERS TO BE INDEXED

CORNER	SECTION	TOWNSHIP	RANGE
N 1/4 CORNER	35	90N	14W
NW CORNER SW 1/4 NE 1/4	35	90N	14W