

INDEX
MARGIN
PROOF
COMPARE

BLACK HAWK COUNTY IOWA:ss
Filed for record JULY 18, 2001 at
3:30 P. M. and recorded in Book
of _____ at page _____.

001647

Patricia J. Lass Recorder
FEE 1-5.00X
HELLAND ENGINEERING & SURVEYING LTD

Paul H. Helland, 1107 Technology Parkway, Cedar Falls, Iowa 50613-6951, (319)-266-0161

UNITED STATES PUBLIC LAND SURVEY CORNER CERTIFICATE OF

LAND SURVEY MONUMENTS SITUATED IN SECTION NO. 34, TOWNSHIP NO. 90 NORTH, RANGE
NO. 14 WEST OF THE FIFTH PRINCIPAL MERIDIAN, BLACK HAWK COUNTY, IOWA.

PREVIOUSLY RECORDED IN BOOK _____, PAGE _____.

(SHOW REASON FOR PREPARING THIS CERTIFICATE, THE EVIDENCE AND DETAILED PROCEDURES USED IN ESTABLISHING THE
CORNER POSITIONS AND MONUMENTATION FOUND OR PLACED.)

MONUMENT DESCRIPTION AND REMARKS:

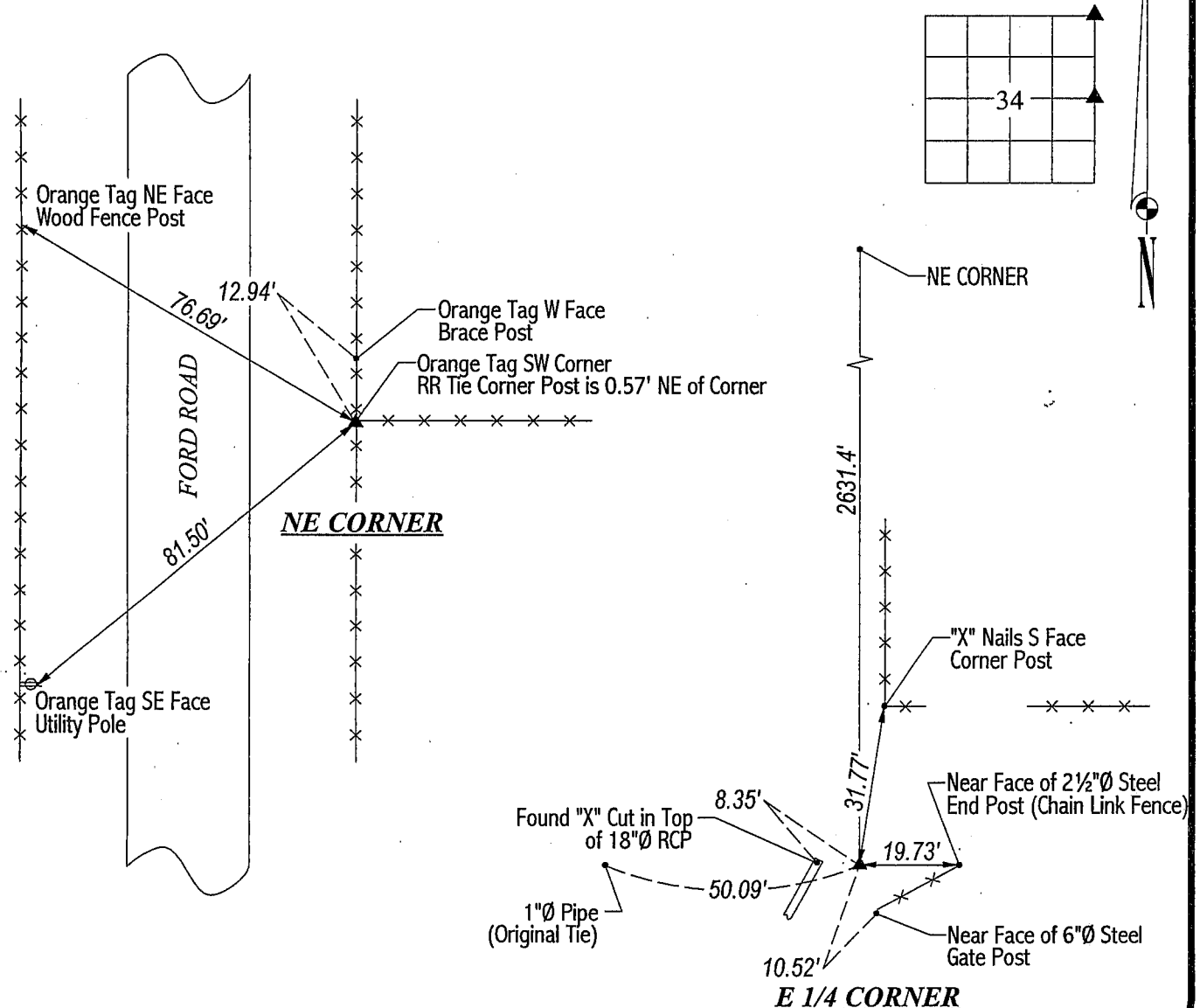
SURVEY DONE IN NE 1/4 OF SEC. 34-T90N-R14W.

NE CORNER: Found concrete monument w/brass cap per county reference ties dated 5/31/1939.
Concrete monument is 0.1' above grade

E 1/4 CORNER: Found 1 1/2"Ø pipe (2.5' long) above a concrete monument w/brass cap per county reference ties dated 1/31/1941.
Concrete monument is 2.8' deep. Found original tie (1"Ø pipe) 50.09' (recorded as 50') West of corner.

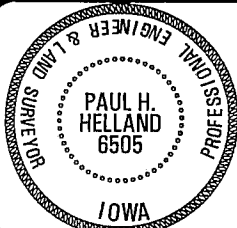
PLAN VIEW

(SHOW A MINIMUM OF THREE REFERENCE TIES TO DURABLE PHYSICAL OBJECTS, RELEVANT MONUMENTS AND PHYSICAL
CONDITIONS THAT WILL ENABLE RECOVERY OF THE CORNER.)



HELLAND ENGINEERING & SURVEYING, LTD.
1107 Technology Parkway
Cedar Falls, Iowa 50613-6951
(319)-266-0161

FILE NAME: 01-137CC.DRG



I hereby certify that this land surveying document was prepared
and the related survey work was performed by me or under my
direct personal supervision and that I am a duly licensed Land
Surveyor under the laws of the State of Iowa.

Paul H. Helland 7/5/01
Paul H. Helland
License Number 6505
My license renewal date is December 31, 2001.
All pages or sheets are covered by this seal except:

LIST CORNERS TO BE INDEXED

CORNER	SECTION	TOWNSHIP	RANGE
NE CORNER	34	90N	14W
E 1/4 CORNER	34	90N	14W