

UNITED STATES PUBLIC LAND SURVEY CORNER CERTIFICATE
OF

Land Survey Monuments situated in Section 33, Township 90 N, Range 14 W, of the Fifth Principal Meridian, Black Hawk County, Iowa
Previously recorded in Book N/A, Page .

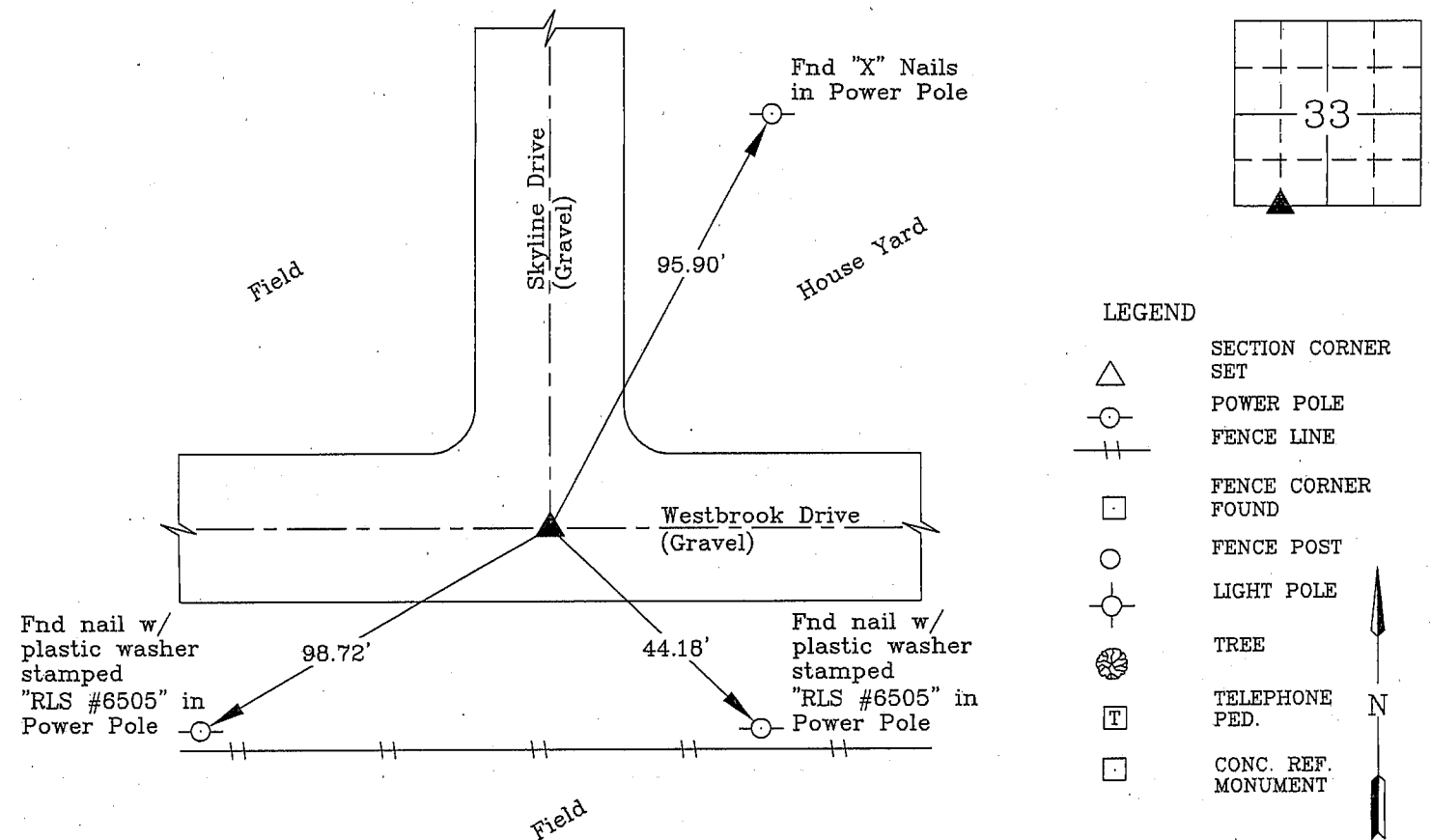
Show reason for preparing this certificate, the evidence and detailed procedures used in establishing the corner positions and monumentation found or placed.)

Monument Description and Remarks: Corner was used for a survey in the W 1/2 of the SW 1/4 of 33-90-14.
Searched area with metal locator and found #4 Rebar, 2" deep, per Final Plat of Beaver Meadows Estates.

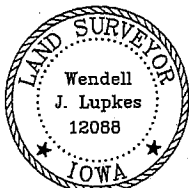
No Corner Certificate Previously Recorded

PLAN - VIEW

(Show a minimum of three reference ties to durable physical objects, relevant monuments and physical conditions recovery of the corner.)



I hereby certify that this land surveying document was prepared and the related survey work was performed by me or under my direct personal supervision and that I am a duly licensed Land Surveyor under the laws of the State of Iowa.



Wendell J. Lupkes 2-18-09
WENDELL J. LUPKES, L.S. DATE
License number 12088
My license renewal date is December 31, 2010
Pages or sheets covered by this seal: 1

List Corner to be Indexed

Corner	Section	Twp	Range
SE Cor.			
SW Qtr.	33	90 N	14 W
SW Qtr.			



VJ Engineering
1501 Technology Parkway
Cedar Falls, Iowa - 319-266-5829

SECTION CORNER
REFERENCE TIES

Scale
NONE
drawn by
MAK
date
2/9/09

2/20/09
6084 #2800