

UNITED STATES PUBLIC LAND SURVEY CORNER CERTIFICATE

OF

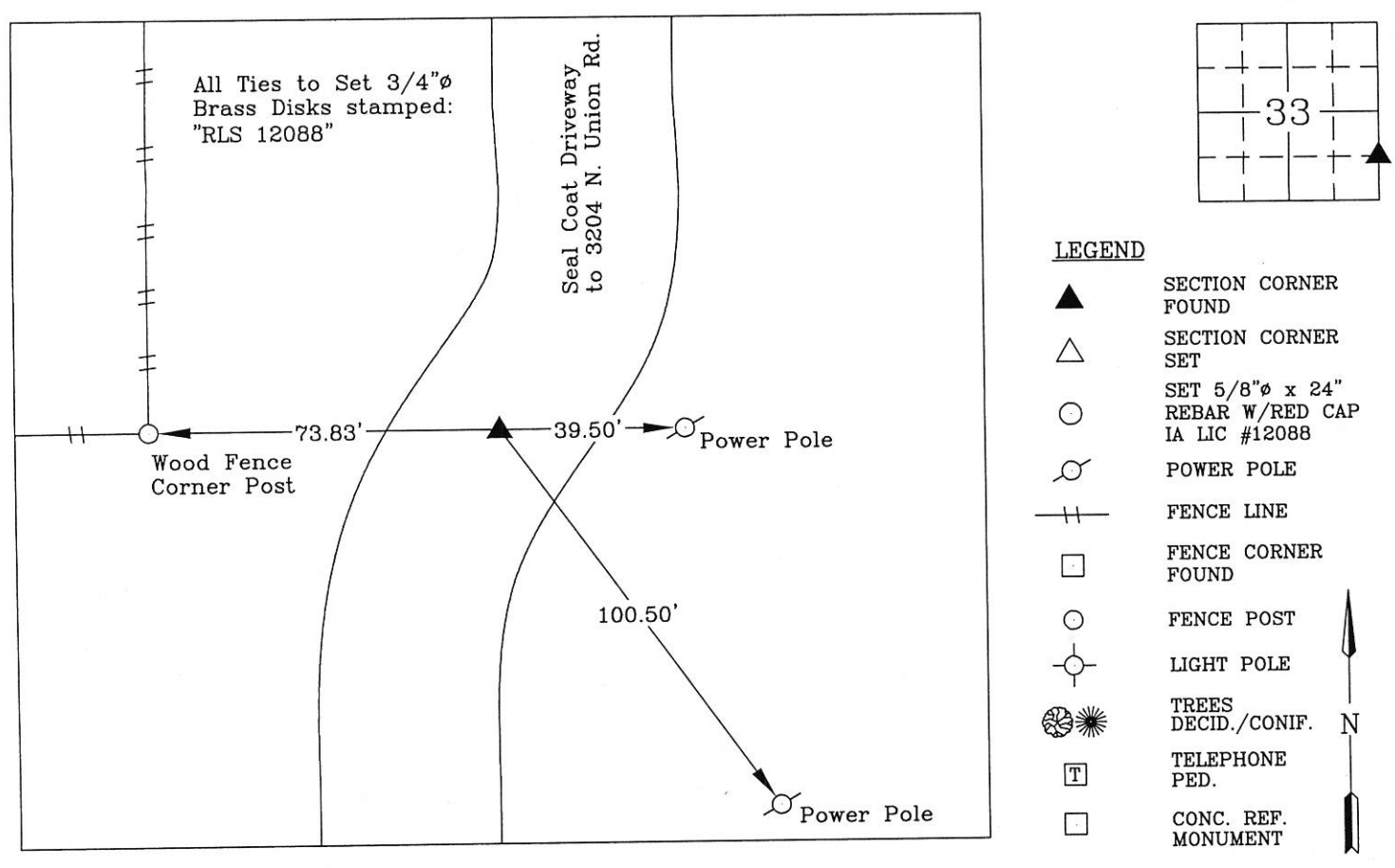
Land Survey Monuments situated in Section 33, Township 90 N, Range 14 W, of the Fifth Principal Meridian, Black Hawk County, Iowa
Previously recorded in Book N/A, Page .

Show reason for preparing this certificate, the evidence and detailed procedures used in establishing the corner positions and monumentation found or placed.)

Monument Description and Remarks: NE Corner, SE 1/4, SE 1/4, Section 33, T90N, R14W
Plat of Survey Misc. Bk 325 Pg. 468 dated 5/22/1997 calls out finding a Bent Pin, Minor Plat File No. 2005-14567 calls out finding a Bent Rebar. Searched area with locator and found a Bent, 1/2"Ø Rebar in the seal coat driveway to 3204 N. Union Rd. Replaced Bent 1/2"Ø Rebar with 5/8"Ø x 24" Rebar with a Red Plastic Cap #12088.

PLAN - VIEW

(Show a minimum of three reference ties to durable physical objects, relevant monuments and physical conditions recovery of the corner.)



I hereby certify that this land surveying document was prepared and the related survey work was performed by me or under my direct personal supervision and that I am a duly licensed Land Surveyor under the laws of the State of Iowa.



Wendell J. Lupkes 3-14-18
WENDELL J. LUPKES, L.S. DATE
License number 12088
My license renewal date is December 31, 2018
Pages or sheets covered by this seal: 1

List Corner to be Indexed

Corner	Section	Twp	Range
NE Corner, SE 1/4, SE 1/4	33	90 N	14 W



* **VJ Engineering**
1501 Technology Parkway
Cedar Falls, Iowa - 319-266-5829

**SECTION CORNER
REFERENCE TIES**

file no.
148090
drawn by
MAK
date
5/2/16