

PREPARED BY: *BLACK HAWK COUNTY ENGINEERS OFFICE
316 E. FIFTH STREET, ROOM 211 WATERLOO, IOWA 50703

PH.# (319) 833-3008 SLSI 9-94
FAX.# (319) 833-3139 BHCO 03-09

UNITED STATES PUBLIC LAND SURVEY CORNER CERTIFICATE OF
Land Survey Monuments situated in Section 33, Township 90 N,
Range 14 W, of the Fifth Principal Meridian, BLACK HAWK County, Iowa.
Previously recorded in File Book 2009 Page 015412, in County Recorder's Office.
(Show reason for preparing this certificate): The corner monument has been Replaced or Modified, per Ia. Code 355.11(1)(c)

(Evidence and detailed procedures used in establishing the corner position(s) and monumentation found or placed.)
Monument Description and Remarks: CENTER WEST (C.W.) 1/16:
FOUND MAG/PK NAIL IN EXIST. DOUBLE SEALCOAT PER CURRENT RECORD, PRIOR TO
RESURF. PROJECT. ESTABLISHED TEMP. CONSTRUCTION (CROSS) TIES w/NO GPS REF.,
PRIOR TO RESURFACING, THEN LOCATION OVERLAYED WITH 2.5" HMA SURFACE COURSE
OVER EXIST. SEALCOAT. CORNER RESET WITH 9"L. x #5 REBAR, AND LOCATED 0.5'
EAST OF C.L. HMA PAVEMENT JOINT AND ALIGNED (±) WITH DATED FENCE TO THE WEST.
PREV. RECORD STATES "CORNER WAS SET ON AN EXTENSION OF LINE FROM THE W. 1/4
COR. TO THE N.E. COR. OF LOT #1 OF BEAVER HILLS ESTATES, AT 50.02 FEET EAST OF
SAID N.E. CORNER OF LOT #1, PER FINAL PLAT OF BEAVER MEADOWS ESTATES" (per PLS
#12088 dtd. 2-18-2009).

NOTE: ALL DISTANCES PLUMB/HORIZ.
(H.D.), "UNLESS DENOTED".

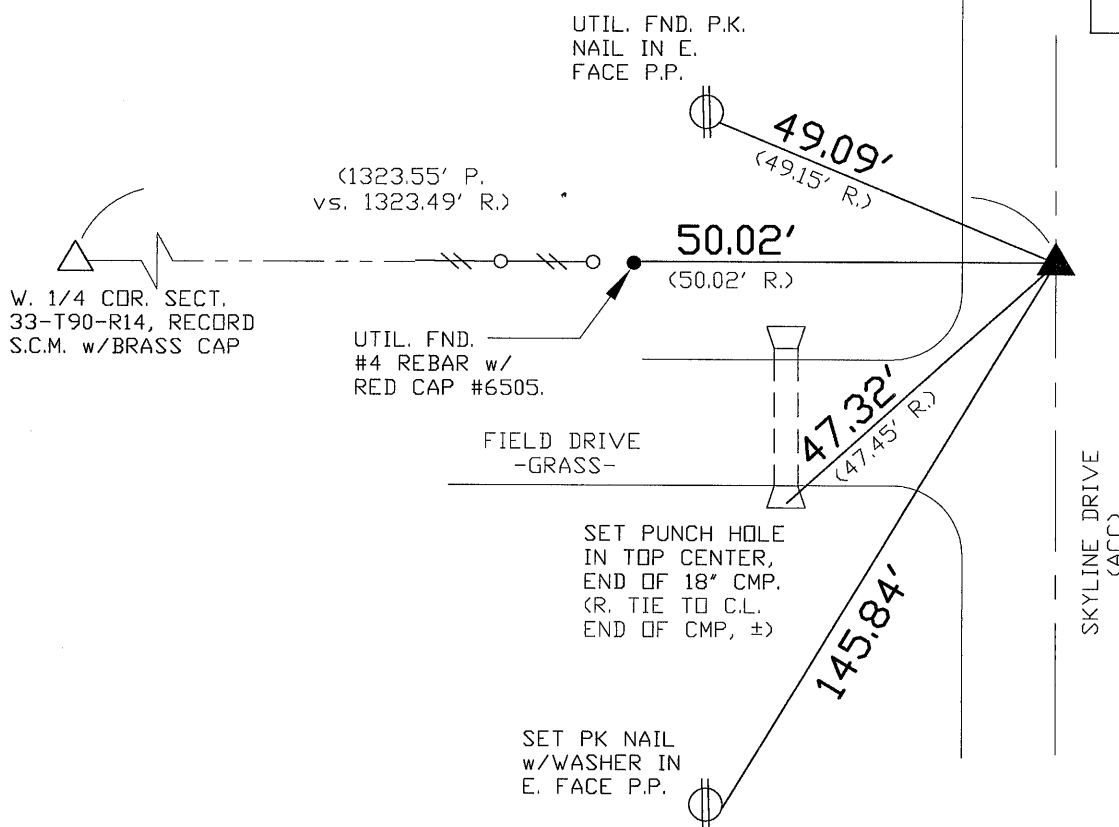
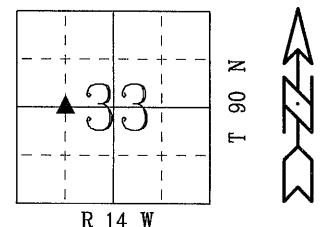
PLAN VIEW

"NOT TO SCALE"

BHco Hist. Ties: -N/A-
FIELD BOOK: BHco. #489 p.13

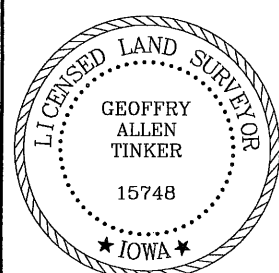
(Show a minimum of three reference ties to durable physical objects, relevant monuments and physical conditions that will enable recovery of the corner.)

- 1.) TIES PER EDM MEASURE IN EITHER
PRISM "OR" NON-PRISM MODE, WHILE
UTILIZING "IN-DIRECT" MEASURE.



FIELD SURVEY: J.D. & T.K. 8/4/10
PREPARED BY: J.D. & G.T. 8/6/10

CERTIFICATION



I hereby certify that this land surveying document was prepared and the related survey work was performed by me or under my direct personal supervision and that I am a duly licensed Land Surveyor under the laws of the State of Iowa.

Geoffrey Allen Tinker 08/06/2010
(date)

License Number 15748

My license renewal date is December 31, 2010

Pages or sheets covered by this seal:

This Land Corner Certificate Only.

LIST CORNERS TO BE INDEXED

| Corner | Section | Township | Range |
|-------------|---------|----------|-------|
| N.E. Cor. | 33 | 90 N | 14 W |
| NW1/4-SW1/4 | | | |

INDEX OF ABBREVIATIONS

(M) = "Measured" Dimension "NP" = Reflectorless EDM Meas.
(P) = "Platted" Dimension "MLM" = Indirect Measure
(R) = "Record" Dimension "CM" = Concrete Monument
(C) = "Calculated" Dimension "SM" = Survey Marker Spike/Tag
"IGS" = Iowa Geodetic Survey "PK" = PK/MAG Nail Brand Style
"WPA" = Works Progress Admin. Survey
"G" = per George Miller Survey (BHco Surveyor 1858-1860)
"S" = per John Ball Survey (BHco Surveyor 1866-1891)
"N" = per Nathan Barber Survey (BHco Surveyor 1908-1931)