

UNITED STATES PUBLIC LAND SURVEY CORNER CERTIFICATE  
OF

Land Survey Monuments situated in Section 33, Township 90 N, Range 14 W, of the Fifth Principal Meridian, Black Hawk County, Iowa  
Previously recorded in Book N/A, Page .

Show reason for preparing this certificate, the evidence and detailed procedures used in establishing the corner positions and monumentation found or placed.)

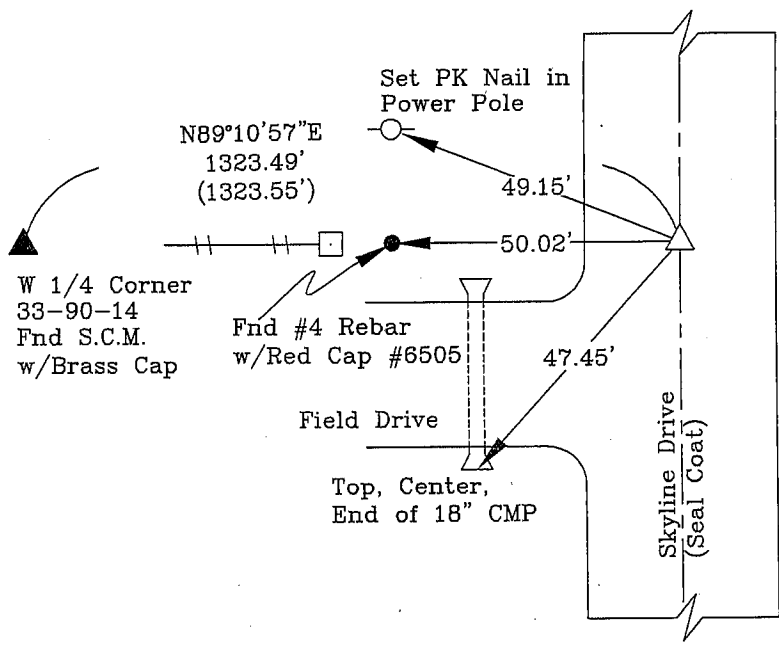
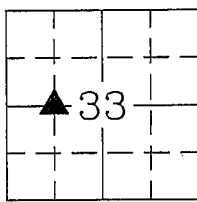
Monument Description and Remarks: Corner was used for a survey in the W 1/2 of the SW 1/4 of 33-90-14.  
Searched area with metal locator and nothing was found. Set PK Nail in Skyline Drive (Seal Coat)

Corner was set on a extension of a line from the W 1/4 Corner to the NE Corner of Lot 1 Beaver Hills  
Estates, 50.02 feet East of said NE Corner of Lot 1, per Final Plat of Beaver Meadows Estates.

No Corner Certificate Previously Recorded

PLAN - VIEW

(Show a minimum of three reference ties to durable physical objects, relevant monuments and physical conditions recovery of the corner.)

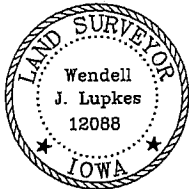


LEGEND

- SECTION CORNER SET
- POWER POLE
- FENCE LINE
- FENCE CORNER FOUND
- FENCE POST
- LIGHT POLE
- TREE
- TELEPHONE PED.
- CONC. REF. MONUMENT

N

I hereby certify that this land surveying document was prepared and the related survey work was performed by me or under my direct personal supervision and that I am a duly licensed Land Surveyor under the laws of the State of Iowa.



Wendell J. Lupkes 2-18-09  
WENDELL J. LUPKES, L.S. DATE  
License number 12088  
My license renewal date is December 31, 2010  
Pages or sheets covered by this seal: 1

List Corner to be Indexed

Corner	Section	Twp	Range
NE Cor.			
NW Qtr.	33	90 N	14 W
SW Qtr.			



VJ Engineering  
1501 Technology Parkway  
Cedar Falls, Iowa - 319-266-5829

SECTION CORNER  
REFERENCE TIES

scale  
NONE  
drawn by  
BJM  
date  
2/12/09