

Reserved for County Recorder's use.



Doc ID: 012090160001 Type: GEN
Recorded: 03/28/2024 at 11:06:00 AM
Fee Amt: \$7.00 Page 1 of 1
Black Hawk County Iowa
SANDIE L. SMITH RECORDER

File 2024-00011817

Jeffrey P. Helland, 6109 Chancellor Drive, Cedar Falls, Iowa 50613-6916, (319)-266-0161

UNITED STATES PUBLIC LAND SURVEY CORNER CERTIFICATE OF

LAND SURVEY MONUMENTS SITUATED IN SECTION NO. 31, TOWNSHIP NO. 90 NORTH, RANGE
NO. 14 WEST OF THE FIFTH PRINCIPAL MERIDIAN, BLACK HAWK COUNTY, IOWA.

PREVIOUSLY RECORDED IN #2003-01654

(SHOW REASON FOR PREPARING THIS CERTIFICATE, THE EVIDENCE AND DETAILED PROCEDURES USED IN ESTABLISHING THE
CORNER POSITIONS AND MONUMENTATION FOUND OR PLACED.)

MONUMENT DESCRIPTION AND REMARKS:

ONLY ONE REFERENCE TIE REMAINS. SURVEY COMPLETED IN THE NE 1/4 OF SEC. 31-T90N-R14W.

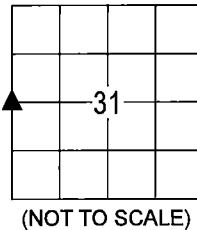
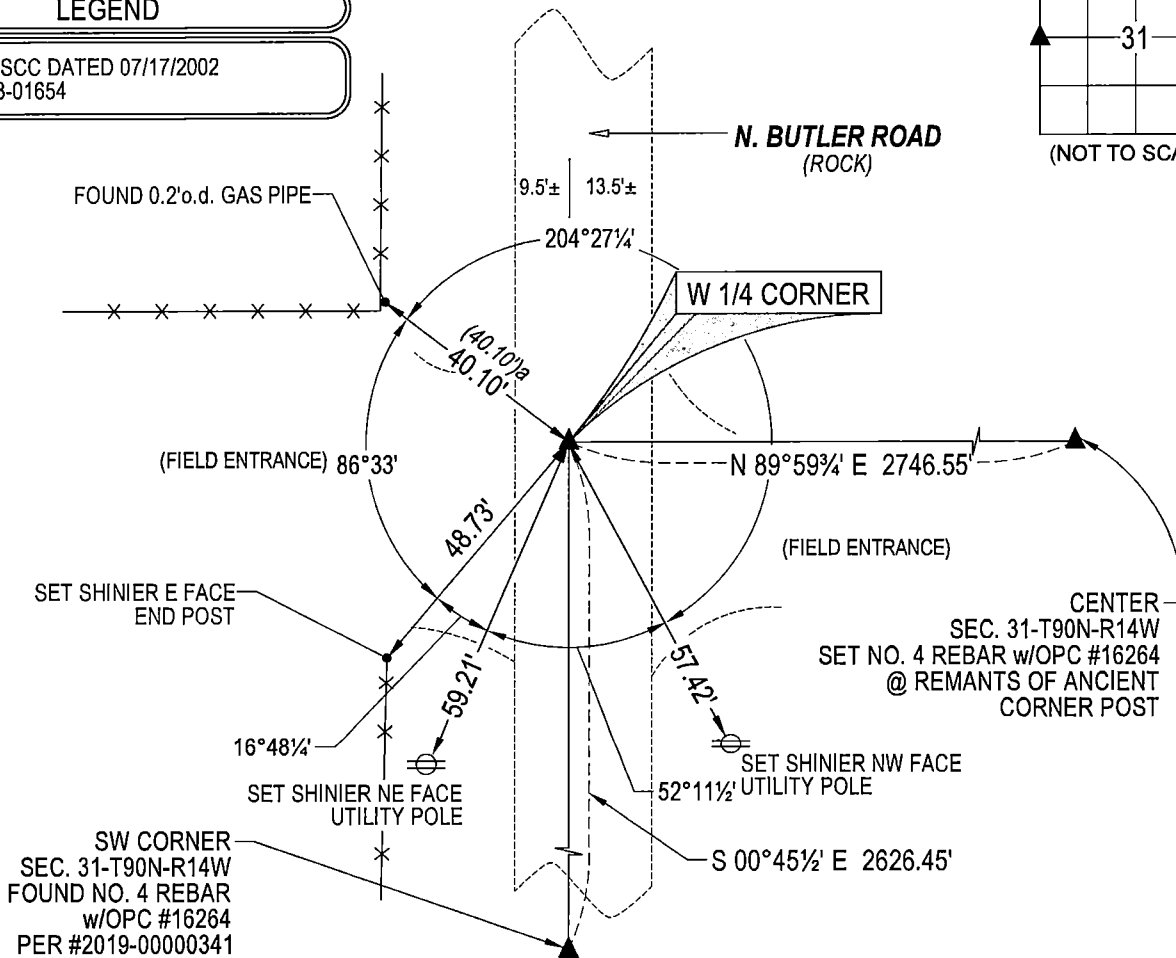
→ **CENTER:** USPLSCC #2003 01654 DATED 07/17/2002 CALLS FOR [BLACK HAWK COUNTY ENGINEER & BUTLER COUNTY
ENGINEER REFERENCE TIES CALL FOR A PIPE AND GAS PIPE, RESPECTIVELY. FOUND 0.2' o.d. GAS PIPE 0.4' DEEP
CORRESPONDING TO GAS PIPE TIE NW. SET "MAG" NAIL IN CENTER OF PIPE.] SEARCHED AREA WITH MAGNETIC
DETECTOR AND FOUND 0.2'o.d. GAS PIPE 0.2' DEEP WITH "MAG" NAIL (9/16"Ø HEAD) IN CENTER OF SAID GAS PIPE.
UTILIZED SAID 0.2'o.d. GAS PIPE 0.2' DEEP WITH "MAG" NAIL IN CENTER AS THE CORRECT CORNER.

PLAN VIEW

(SHOW A MINIMUM OF THREE REFERENCE TIES TO DURABLE PHYSICAL OBJECTS, RELEVANT MONUMENTS AND PHYSICAL
CONDITIONS THAT WILL ENABLE RECOVERY OF THE CORNER.)

LEGEND

(0.0')a USPLSCC DATED 07/17/2002
#2003-01654



SEE ASSOCIATED PLAT OF SURVEY FOR
"RECORDED AS" INFORMATION

(BEARINGS ARE ASSUMED)



HELLAND ENGINEERING & SURVEYING, LTD.
6109 Chancellor Drive
Cedar Falls, Iowa 50613-6916
(319)-266-0161

SHINER = 4d. NAIL & 1 5/16"Ø METAL SHINER DRAWN BY: CDR
BRASS TAG = 4d. NAIL & 13/16"Ø BRASS TAG
OPC = PLASTIC CAP (O=ORANGE, R=RED, Y=YELLOW)
(00') RECORDED AS FILE NAME: 24-111-26.DWG



I hereby certify that this land surveying document was prepared
and the related survey work was performed by me or under my
direct personal supervision and that I am a duly licensed
Professional Land Surveyor under the laws of the State of Iowa.
Jeffrey P. Helland 3/11/2024
Jeffrey P. Helland
License Number 16264
My license renewal date is December 31, 2025.
All pages or sheets are covered by this seal except:

LIST CORNERS TO BE INDEXED

CORNER	SECTION	TOWNSHIP	RANGE
W 1/4 CORNER	31	90N	14W