

Frederic S. Lee

BLACK HAWK COUNTY RECORDER

HELLAND ENGINEERING &amp; SURVEYING LTD

Paul H. Helland, 1107 Technology Parkway, Cedar Falls, Iowa 50613-6951, (319)-266-0161

# UNITED STATES PUBLIC LAND SURVEY CORNER CERTIFICATE

LAND SURVEY MONUMENTS SITUATED IN SECTION NO. 31, TOWNSHIP NO. 90 NORTH, RANGE NO. 14 WEST OF THE FIFTH PRINCIPAL MERIDIAN, BLACK HAWK COUNTY, IOWA.

PREVIOUSLY RECORDED IN BOOK \_\_\_\_\_, PAGE \_\_\_\_\_

(SHOW REASON FOR PREPARING THIS CERTIFICATE, THE EVIDENCE AND DETAILED PROCEDURES USED IN ESTABLISHING THE CORNER POSITIONS AND MONUMENTATION FOUND OR PLACED.)

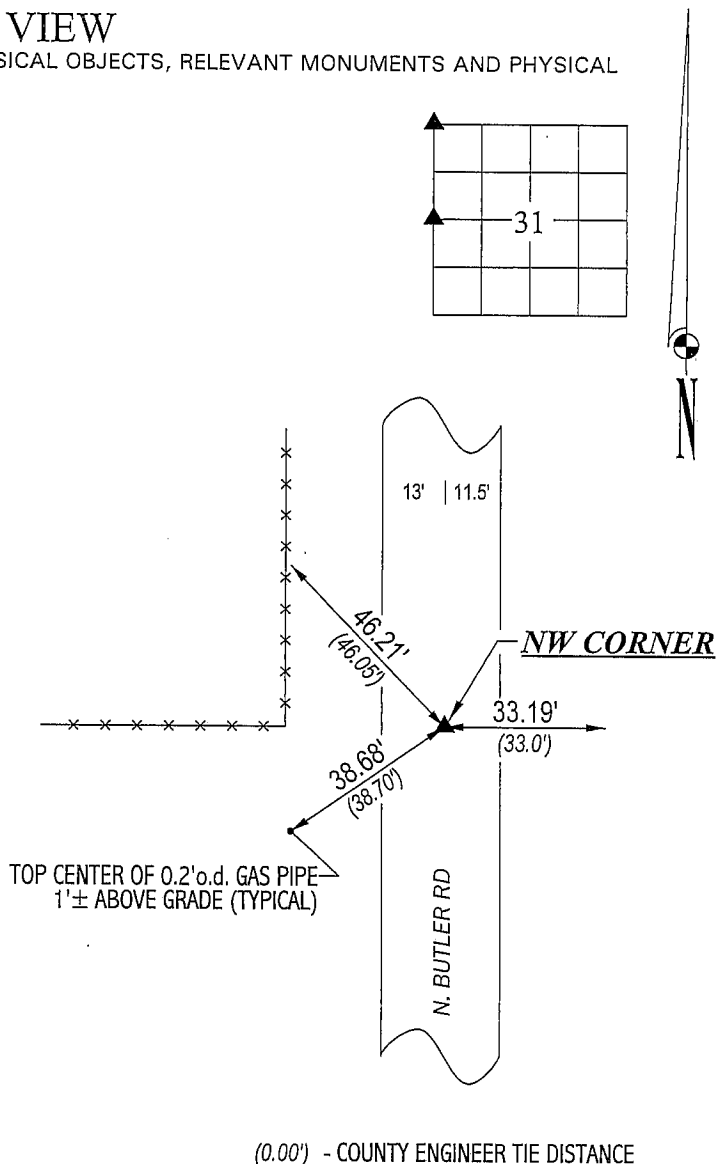
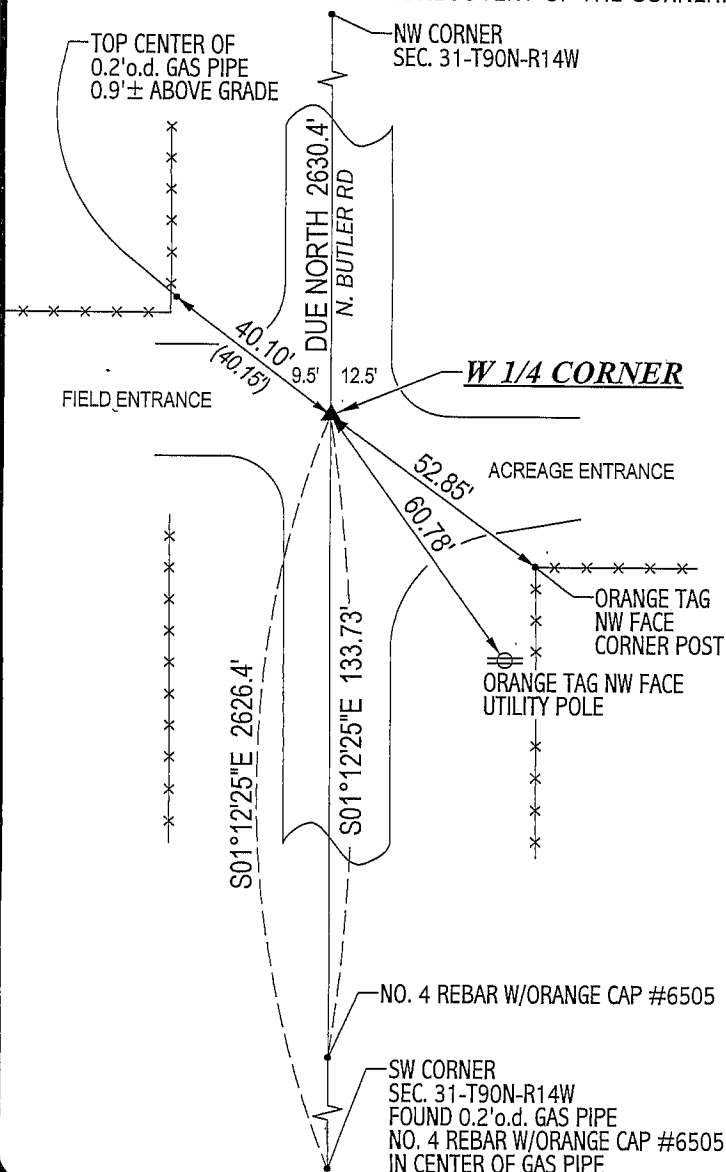
MONUMENT DESCRIPTION AND REMARKS:

NO CORNER CERTIFICATE ON FILE. SURVEY DONE IN NWRL 1/4 & SWRL 1/4 OF SEC. 31-T90N-R14W.

- NW CORNER: BLACK HAWK COUNTY ENGINEER FIELD TIE BOOK & BUTLER COUNTY ENGINEER REFERENCE TIES CALL FOR A GAS PIPE. FOUND 0.2' o.d. GAS PIPE 0.4' DEEP CORRESPONDING TO THREE GAS PIPE TIES. SET "MAG" NAIL IN CENTER OF PIPE.
- W 1/4 CORNER: BLACK HAWK COUNTY ENGINEER & BUTLER COUNTY ENGINEER REFERENCE TIES CALL FOR A PIPE AND A GAS PIPE, RESPECTIVELY. FOUND 0.2' o.d. GAS PIPE 0.4' DEEP CORRESPONDING TO GAS PIPE TIE NW. SET "MAG" NAIL IN CENTER OF PIPE.

### PLAN VIEW

(SHOW A MINIMUM OF THREE REFERENCE TIES TO DURABLE PHYSICAL OBJECTS, RELEVANT MONUMENTS AND PHYSICAL CONDITIONS THAT WILL ENABLE RECOVERY OF THE CORNER.)



(0.00') - COUNTY ENGINEER TIE DISTANCE



**HELLAND ENGINEERING & SURVEYING, LTD.**  
1107 Technology Parkway  
Cedar Falls, Iowa 50613-6951  
(319)-266-0161

FILE NAME: 02-220C4.DRG



I hereby certify that this land surveying document was prepared and the related survey work was performed by me or under my direct personal supervision and that I am a duly licensed Land Surveyor under the laws of the State of Iowa.

Paul H. Helland  
License Number 6505  
My license renewal date is December 31, 2003.  
All pages or sheets are covered by this seal except:

## LIST CORNERS TO BE INDEXED

<u>CORNER</u>	<u>SECTION</u>	<u>TOWNSHIP</u>	<u>RANGE</u>
NW CORNER	31	90N	14W
W 1/4 CORNER	31	90N	14W

Re