



Doc ID: 007536480001 Type: GEN
Recorded: 01/17/2017 at 01:22:25 PM
Fee Amt: \$7.00 Page 1 of 1
Black Hawk County Iowa
SANDIE L. SMITH RECORDER

File 2017-00012942

UNITED STATES PUBLIC LAND SURVEY CORNER CERTIFICATE OF

LAND SURVEY MONUMENTS SITUATED IN SECTION NO. 31, TOWNSHIP NO. 90 NORTH, RANGE
NO. 14 WEST OF THE FIFTH PRINCIPAL MERIDIAN, BLACK HAWK COUNTY, IOWA.

PREVIOUSLY RECORDED IN N/A

(SHOW REASON FOR PREPARING THIS CERTIFICATE, THE EVIDENCE AND DETAILED PROCEDURES USED IN ESTABLISHING THE CORNER POSITIONS AND MONUMENTATION FOUND OR PLACED.)
MONUMENT DESCRIPTION AND REMARKS:

NE CORNER:

W.P.A. CHAINING NOTES DATED 4/30/41 CALL FOR "S.C.M."

COUNTY ENGINEER'S TIES CALL FOR "S.C.M."

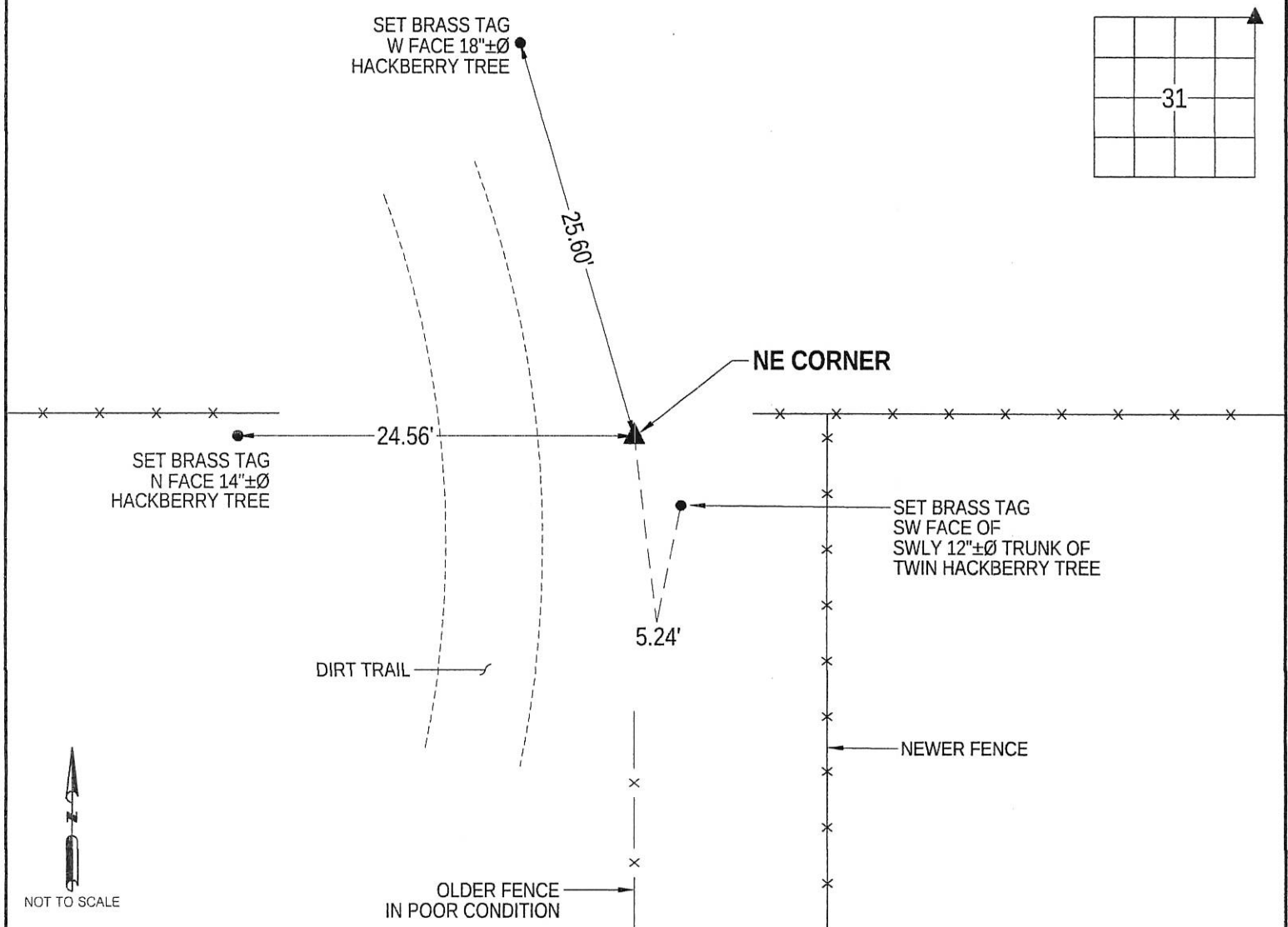
FOUND CONCRETE MONUMENT WITH BRASS CAP 0.1' DEEP. SET NO. 4 REBAR 0.25' SOUTH FOR METAL DETECTION ONLY.

THIS USPLSCC IS BEING PREPARED BECAUSE THERE IS NO USPLSCC ON FILE.

PLEASE SEE PLAT OF SURVEY IN THE NW FRL 1/4 31-90-14 FOR BEARINGS AND DISTANCES TO ADDITIONAL MONUMENTS.

PLAN VIEW

(SHOW A MINIMUM OF THREE REFERENCE TIES TO DURABLE PHYSICAL OBJECTS, RELEVANT MONUMENTS AND PHYSICAL CONDITIONS THAT WILL ENABLE RECOVERY OF THE CORNER.)



NOT TO SCALE



I hereby certify that this land surveying document was prepared and the related survey work was performed by me or under my direct personal supervision and that I am a duly licensed Land Surveyor under the laws of the State of Iowa.

Ted C. Hoodjer
TED C. HOODJER
License Number 21096

1/4/2016
DATE

My license renewal date is December 31, 2017.
All Pages or sheets are covered by this seal except:

LIST CORNERS TO BE INDEXED
CORNER SEC-TWP-RNG

NE 31-90-14

