

UNITED STATES PUBLIC LAND SURVEY CORNER CERTIFICATE  
OF

LAND SURVEY MONUMENTS SITUATED IN SECTION NO. 31, TOWNSHIP NO. 90 NORTH, RANGE NO. 14 WEST OF THE FIFTH PRINCIPAL MERIDIAN, BLACK HAWK COUNTY, IOWA.

PREVIOUSLY RECORDED IN N/A

(SHOW REASON FOR PREPARING THIS CERTIFICATE, THE EVIDENCE AND DETAILED PROCEDURES USED IN ESTABLISHING THE CORNER POSITIONS AND MONUMENTATION FOUND OR PLACED.)  
MONUMENT DESCRIPTION AND REMARKS:

N 1/4 CORNER:

W.P.A. CHAINING NOTES DATED 4/30/41 CALL FOR "S.C.M."

COUNTY ENGINEER'S TIES CALL FOR "S.C.M."

CALCULATED A SEARCH POSITION BY USING RECORD POSITION PER W.P.A. CHAINING NOTES. CALCULATED RANDOM LINE BEGINNING AT THE NE CORNER 31-90-14 AND ENDING AT A POINT 104.25 FEET NORTH OF THE NW CORNER 31-90-14. FROM THIS BASELINE I CALCULATED THE POSITION TO BE AT STA. 26+26.1 AND 19.4 LEFT. THIS FALL IN THE CREEK BED. PROBED IN A VERY LARGE AREA SURROUNDING THIS POSITION AND FOUND NOTHING. ALL TIES OF RECORD HAVE BEEN OBLITERATED. WHEN THE W.P.A.'S SET THE CORNER, IT APPEARS IT WAS ON THE BANK ON THE SOUTH SIDE OF THE CREEK. SINCE THAT TIME, I BELIEVE THE CREEK HAS SHIFTED TO THE SOUTH.

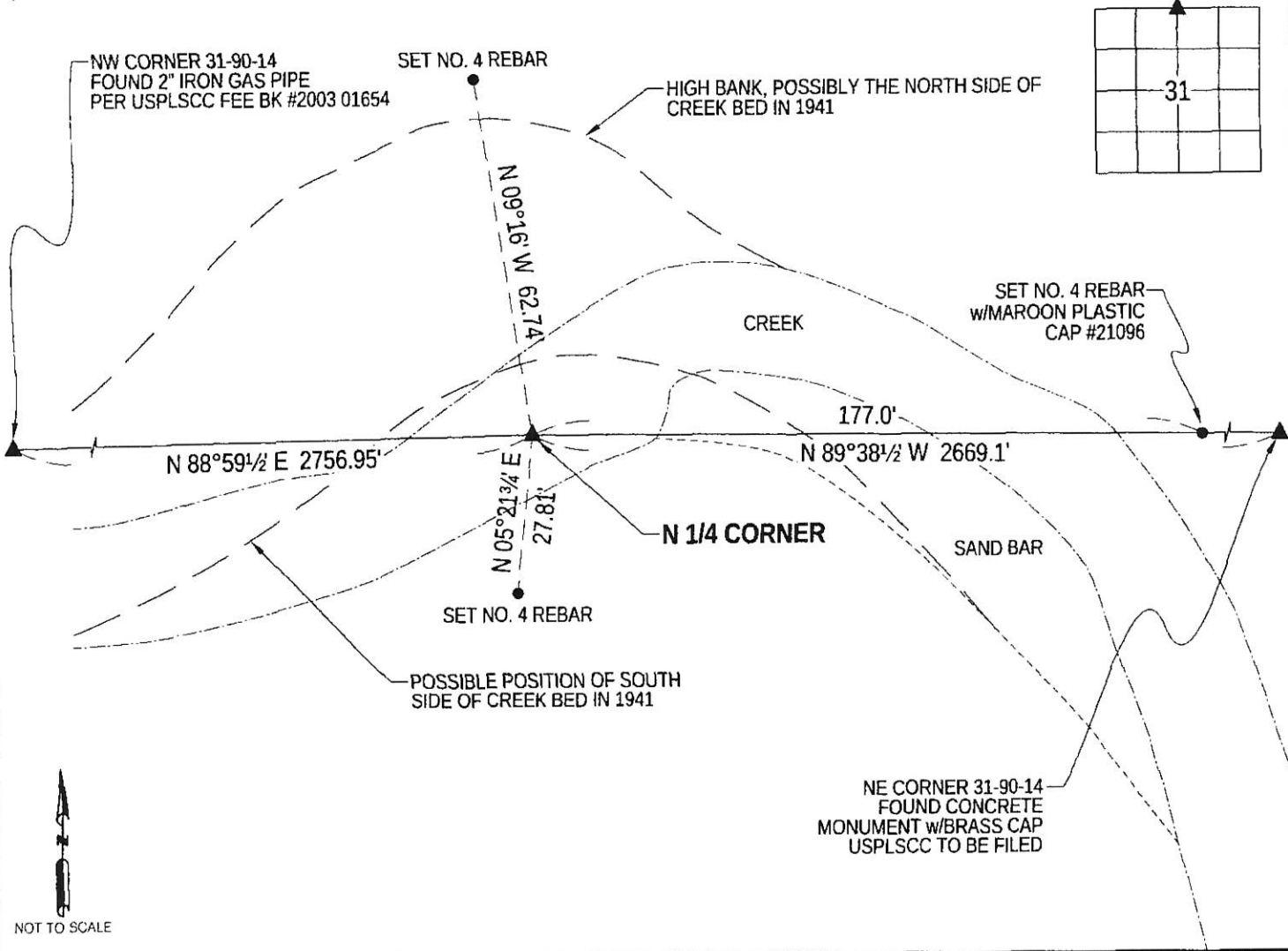
SET NO. 4 REBAR WITH MAROON PLASTIC CAP #21089 AT SAID POSITION CALCULATED PER W.P.A. NOTES. CORNER FALLS IN THE CREEK BED AND IS LIKELY TO BE WASHED OUT. THEREFORE, SET A WITNESS MONUMENT ON THE SECTION LINE TO EAST.

THIS USPLSCC IS BEING PREPARED BECAUSE THERE IS NO USPLSCC ON FILE.

PLEASE SEE PLAT OF SURVEY IN THE NW FRL 1/4 31-90-14 FOR BEARINGS AND DISTANCES TO ADDITIONAL MONUMENTS.

PLAN VIEW

(SHOW A MINIMUM OF THREE REFERENCE TIES TO DURABLE PHYSICAL OBJECTS, RELEVANT MONUMENTS AND PHYSICAL CONDITIONS THAT WILL ENABLE RECOVERY OF THE CORNER.)



TED C. HOODJER  
21096

I hereby certify that this land surveying document was prepared and the related survey work was performed by me or under my direct personal supervision and that I am a duly licensed Land Surveyor under the laws of the State of Iowa.  

TED C. HOODJER

License Number 21096

My license renewal date is December 31, 2017.

All Pages or sheets are covered by this seal except:

1/9/2017  
DATE

LIST CORNERS TO BE INDEXED

CORNER	SEC-TWP-RNG
N 1/4	31-90-14

HOODJER

LAND SURVEYING

File Number: 2017-00012943 Seq: 1  
HOODJER LAND SURVEYING 29734 202ND ST. CLARKSVILLE, IA 50619 (319) 239-3423 PROJ. 15-122