

INDEX  
MARGIN  
PROOF  
COMPARE

BLACK HAWK COUNTY IOWA:SS 021516  
Filed for record FEB 6, 2002 at  
4:00 P.M. and recorded in Book \_\_\_\_\_  
of \_\_\_\_\_ Page \_\_\_\_\_  
of Patricia J. Lass Recorder  
Fee 1-5.00/  
HELLAND ENGINEERING & SURVEYING

Paul H. Helland, 1107 Technology Parkway, Cedar Falls, Iowa 50613-6951, (319)-266-0161

## UNITED STATES PUBLIC LAND SURVEY CORNER CERTIFICATE OF

LAND SURVEY MONUMENTS SITUATED IN SECTION NO. 29, TOWNSHIP NO. 90 NORTH, RANGE  
NO. 14 WEST OF THE FIFTH PRINCIPAL MERIDIAN, BLACK HAWK COUNTY, IOWA.

PREVIOUSLY RECORDED IN BOOK \_\_\_\_\_, PAGE \_\_\_\_\_.

(SHOW REASON FOR PREPARING THIS CERTIFICATE, THE EVIDENCE AND DETAILED PROCEDURES USED IN ESTABLISHING THE  
CORNER POSITIONS AND MONUMENTATION FOUND OR PLACED.)

### MONUMENT DESCRIPTION AND REMARKS:

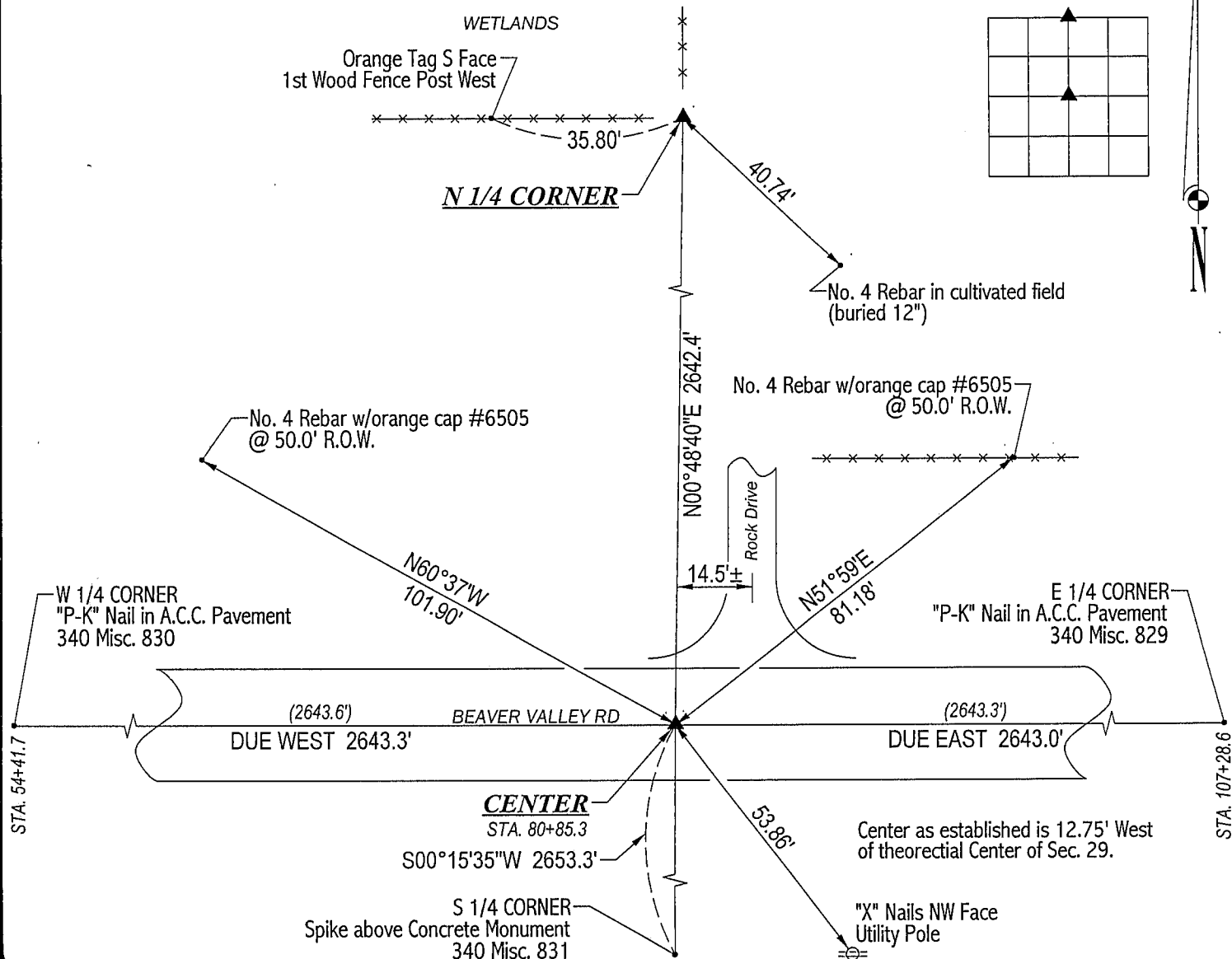
SURVEY DONE IN SE 1/4 NW 1/4 & SW 1/4 NE 1/4 OF SEC. 29-T90N-R14W.

N 1/4 CORNER: Found concrete monument w/brass cap. Top 6" of C.M. broken off and entire monument leaning NWly.  
Straightened C.M. and cut "X" on top of broken base. Placed top section of C.M. on South side of base w/brass cap facing  
down. Set No. 4 rebar on North side for magnetic detection. Top of C.M. is flush.

CENTER: A "ngrhead" was found in 1931 per ties in Bk 91 Pg 45 in the Black Hawk County Engineer's Office. Gas pipes were 33.0'  
N & S OF "ngrhead". Gas pipes not found due to road widening & ditch excavation. Transit Notes dated 1931 states a 0°20' RT.  
deflection at Center, yet the existing road and R.O.W. fences dictate a straight line between the W 1/4 Corner & E 1/4 Corner. Set  
No. 4 rebar 1' long in A.C.C. pavement on straight line between said W 1/4 Corner & E 1/4 Corner and per prorated stationing  
distances from 1931 notes.

### PLAN VIEW

(SHOW A MINIMUM OF THREE REFERENCE TIES TO DURABLE PHYSICAL OBJECTS, RELEVANT MONUMENTS AND PHYSICAL  
CONDITIONS THAT WILL ENABLE RECOVERY OF THE CORNER.)



HELLAND ENGINEERING & SURVEYING, LTD.  
1107 Technology Parkway  
Cedar Falls, Iowa 50613-6951  
(319)-266-0161

FILE NAME: 02-114CC.DRG



I hereby certify that this land surveying document was prepared  
and the related survey work was performed by me or under my  
direct personal supervision and that I am a duly licensed Land  
Surveyor under the laws of the State of Iowa.

Paul H. Helland 2/5/02  
Paul H. Helland  
License Number 6505  
My license renewal date is December 31, 2003.  
All pages or sheets are covered by this seal except:

LIST CORNERS TO BE INDEXED			
CORNER	SECTION	TOWNSHIP	RANGE
N 1/4 CORNER	29	90N	14W
CENTER	29	90N	14W