

BLACK HAWK COUNTY ENGINEER

PREPARED BY: BLACK HAWK COUNTY ENGINEERS OFFICE
316 E. FIFTH STREET, ROOM 211 WATERLOO, IOWA 50703PH.# (319) 833-3008
FAX.# (319) 833-3139SLSI 9-94
CERT 12-96

UNITED STATES PUBLIC LAND SURVEY CORNER CERTIFICATE OF
Land Survey Monuments situated in Section 29, Township 90 N,
Range 14 W, of the Fifth Principal Meridian, BLACK HAWK County, Iowa.
2 1/4 COR Previously recorded in Misc. Book 340, Page 829, in County Recorder's Office.

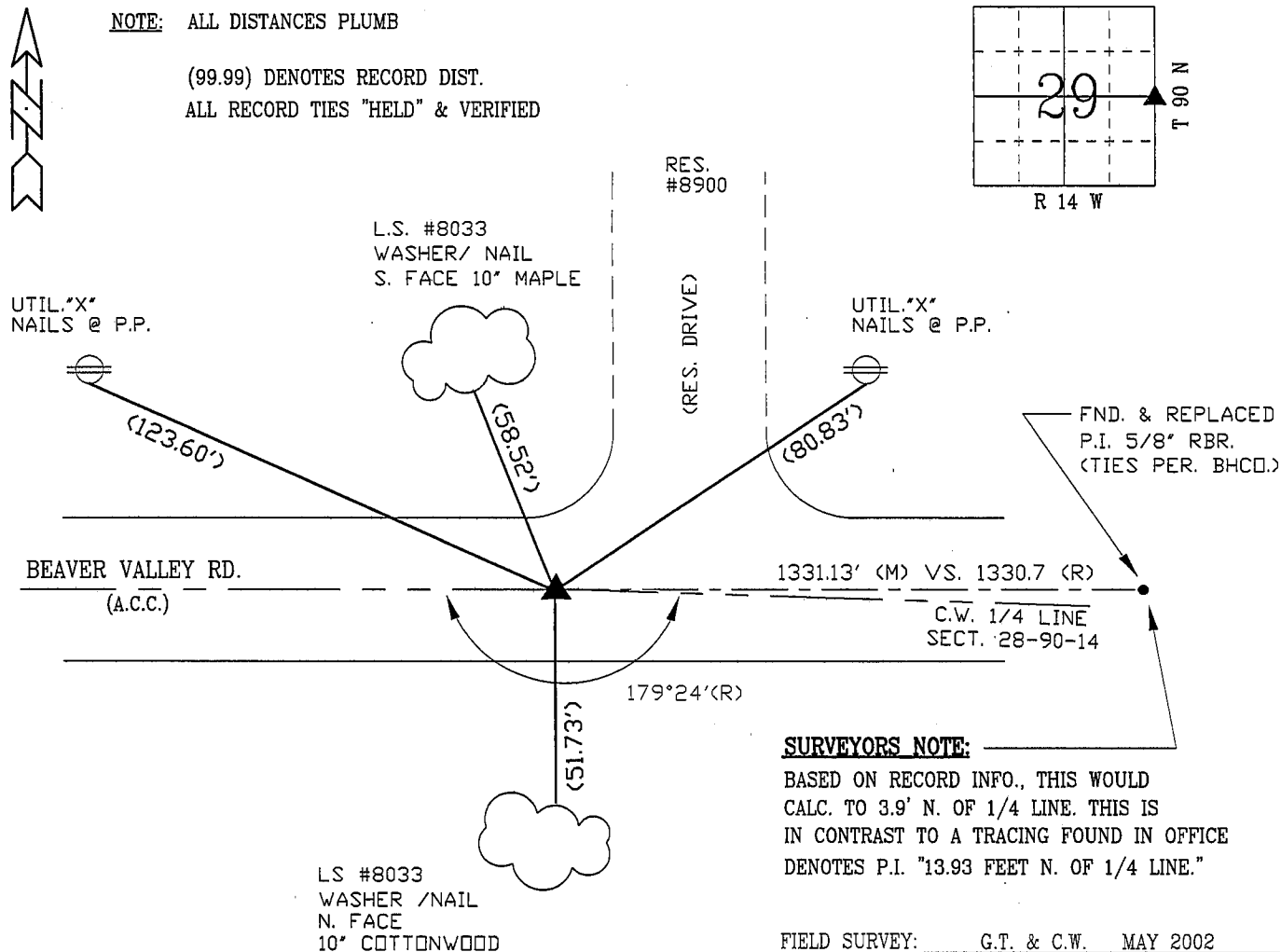
(Show reason for preparing this certificate, the evidence and detailed procedures used in establishing the corner positions and monumentation found or placed.)

Monument Description and Remarks: E. 1/4 CORNER SECTION 29-90-14
FOUND PK. NAIL, PER RECORD TIES, PRIOR TO RESURFACING. AFTER 3 1/2"
ACC RESURF., ESTABLISHED #5 REBAR X 5" L. FLUSH W/ ACC.
CORNER @ RECORD PLAN STATION OF 107+27 (AHEAD EAST) w/ C.L. ROAD DEFL. OF 0°26' RT.
"vs." 1/4 LINE EAST OF 0°36' RT. PER RECORD FIELD NOTES & PLANS IN CO. ENGINEERS OFFICE.

PLAN - VIEW

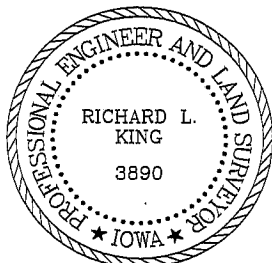
(Show a minimum of three reference ties to durable physical objects, relevant monuments and physical conditions that will enable recovery of the corner.)

NOT TO SCALE

**SURVEYORS NOTE:**

BASED ON RECORD INFO., THIS WOULD
CALC. TO 3.9' N. OF 1/4 LINE. THIS IS
IN CONTRAST TO A TRACING FOUND IN OFFICE
DENOTES P.I. "13.93 FEET N. OF 1/4 LINE."

FIELD SURVEY: G.T. & C.W. MAY 2002
PREPARED BY: M.C. & G.T. 06/17/02

CERTIFICATION

I hereby certify that this land surveying document
was prepared and the related survey work was
performed by me or under my direct personal
supervision and that I am a duly licensed Land
Surveyor under the laws of the State of Iowa.

Richard L. King 6/19/02
Richard L. King (date)

License Number: 3890

My license renewal date is December 31, 2003

Pages or sheets covered by this seal:

This Land Corner Certificate Only.

LIST CORNERS TO BE INDEXED

Corner	Section	Township	Range
E. 1/4	29	90 N	14 W
W. 1/4	28	90 N	14 W