

BLACK HAWK COUNTY ENGINEER

PREPARED BY: BLACK HAWK COUNTY ENGINEERS OFFICE  
316 E. FIFTH STREET, ROOM 211 WATERLOO, IOWA 50703PH.# (319) 833-3008  
FAX.# (319) 833-3139 SLSI 9-94  
CERT 12-96

UNITED STATES PUBLIC LAND SURVEY CORNER CERTIFICATE OF  
Land Survey Monuments situated in Section 29, Township 90 N,  
Range 14 W, of the Fifth Principal Meridian, BLACK HAWK County, Iowa.  
Previously recorded in Misc. Book 345, Page 591, in County Recorder's Office.

(Show reason for preparing this certificate, the evidence and detailed procedures used in establishing the corner positions and monumentation found or placed.)

Monument Description and Remarks: CENTER SECTION 29-90-14  
FOUND 1/2" REBAR, PER RECORD TIES, PRIOR TO RESURFACING. AFTER 3-1/2" RE-SURF,  
ESTABLISHED #5 REBAR X 5" L. FLUSH W/ ACC.

## PLAN - VIEW

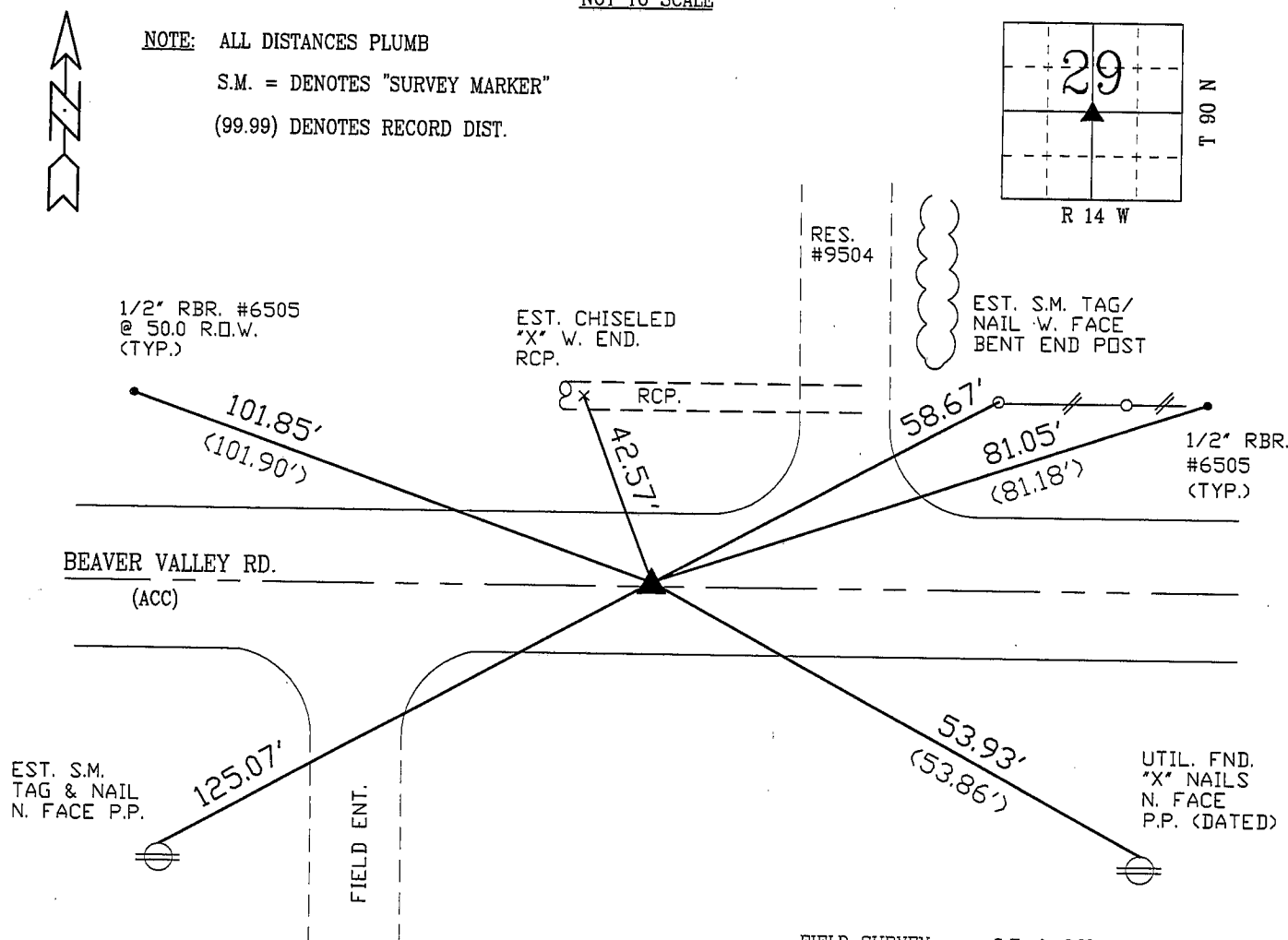
(Show a minimum of three reference ties to durable physical objects, relevant monuments and physical conditions that will enable recovery of the corner.)

NOT TO SCALE

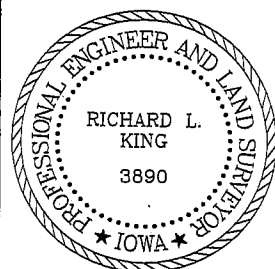
NOTE: ALL DISTANCES PLUMB

S.M. = DENOTES "SURVEY MARKER"

(99.99) DENOTES RECORD DIST.

FIELD SURVEY: G.T. & C.W. MAY 2002  
PREPARED BY: M.C. & G.T. 06/17/02

## CERTIFICATION



I hereby certify that this land surveying document was prepared and the related survey work was performed by me or under my direct personal supervision and that I am a duly licensed Land Surveyor under the laws of the State of Iowa.

*Richard L. King* 6/19/02  
Richard L. King (date)

License Number 3890

My license renewal date is December 31, 2003

Pages or sheets covered by this seal:

This Land Corner Certificate Only.

## LIST CORNERS TO BE INDEXED

| Corner | Section | Township | Range |
|--------|---------|----------|-------|
| CENTER | 29      | 90 N     | 14 W  |