

PREPARED BY PATRICK SHEPARD: CIVIL ENGINEERING CONSULTANTS, INC. - 2400 86th ST. #12 -DES MOINES, IOWA 50322

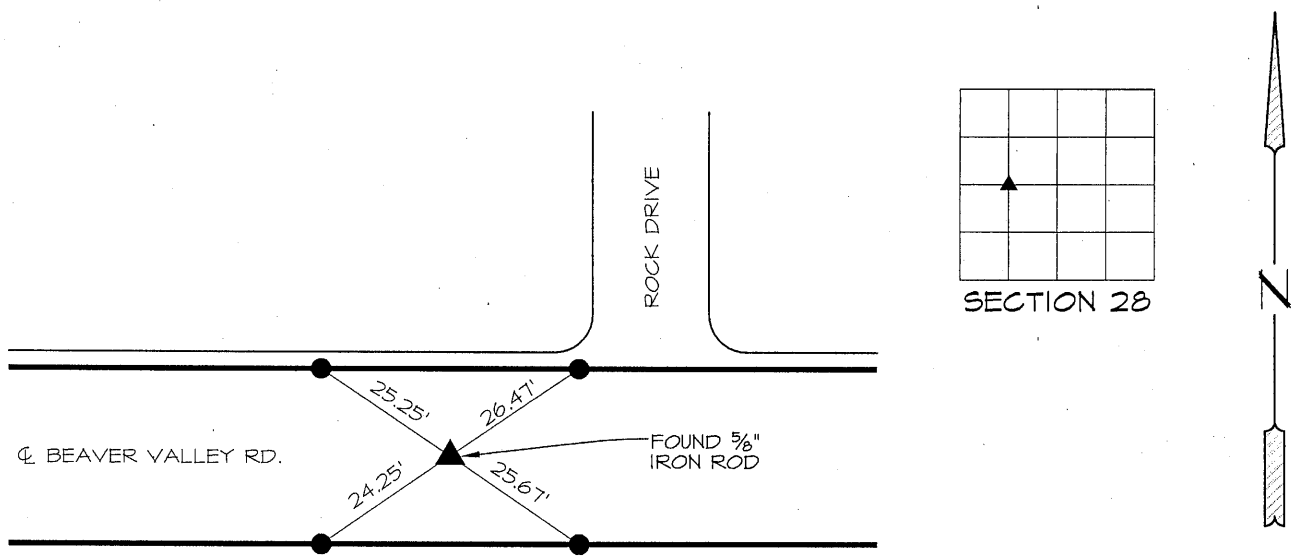
# UNITED STATES PUBLIC LAND SURVEY CORNER CERTIFICATE OF

LAND SURVEY MONUMENTS SITUATED IN SECTION 28, TOWNSHIP 90 NORTH, RANGE 14 WEST, OF THE FIFTH PRINCIPAL MERIDIAN, BLACK HAWK COUNTY, IOWA. NO PREVIOUS RECORD FOUND AT THE BLACK HAWK COUNTY RECORDER'S OFFICE.

## MONUMENT DESCRIPTION AND REMARKS:

NE CORNER, NW  $\frac{1}{4}$ , SW  $\frac{1}{4}$ , 28-90-14. FOUND  $\frac{5}{8}$ " IRON ROD IN CENTERLINE OF ROAD. THIS CERTIFICATE IS BEING PREPARED TO DOCUMENT MONUMENTATION FOUND AND ACCEPTED AS NE CORNER, NW  $\frac{1}{4}$ , SW  $\frac{1}{4}$  AND TO PROVIDE TIES.

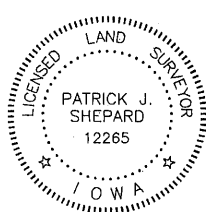
## PLAN -VIEW



\* ALL TIES ARE PK NAILS  
SET IN FOG LINE

## LIST CORNERS TO BE INDEXED

CORNERS	SECTION	TWP.	RANGE
NE CORNER	28	90	14
NW $\frac{1}{4}$ SW $\frac{1}{4}$			
NW CORNER	28	90	14
NE $\frac{1}{4}$ SW $\frac{1}{4}$			
SE CORNER	28	90	14
SW $\frac{1}{4}$ NW $\frac{1}{4}$			
SW CORNER	28	90	14
SE $\frac{1}{4}$ NW $\frac{1}{4}$			



I HEREBY CERTIFY THAT THIS LAND SURVEYING DOCUMENT  
WAS PREPARED AND THE RELATED SURVEY WORK WAS  
PERFORMED BY ME OR UNDER MY DIRECT PERSONAL  
SUPERVISION AND THAT I AM A DULY LICENSED LAND  
SURVEYOR UNDER THE LAWS OF THE STATE OF IOWA.

PATRICK J. SHEPARD, IOWA LICENSE NO. 12265 DATE  
MY LICENSE RENEWAL DATE IS DECEMBER 31, 2013

PAGES OR SHEETS COVERED BY THIS SEAL:

THIS SHEET ONLY