

Reserved for County Recorder's use.



Doc ID: 009773320001 Type: GEN
Recorded: 03/04/2020 at 03:22:02 PM
Fee Amt: \$7.00 Page 1 of 1
Black Hawk County Iowa
SANDIE L. SMITH RECORDER

File 2020-00015195

Kyle J. Helland, 6109 Chancellor Drive, Cedar Falls, Iowa 50613-6916, (319)-266-0161

UNITED STATES PUBLIC LAND SURVEY CORNER CERTIFICATE
OF

LAND SURVEY MONUMENTS SITUATED IN SECTION NO. 27, TOWNSHIP NO. 90 NORTH, RANGE NO. 14 WEST OF THE FIFTH PRINCIPAL MERIDIAN, BLACK HAWK COUNTY, IOWA.
PREVIOUSLY RECORDED IN FILE #2013-00015740

(SHOW REASON FOR PREPARING THIS CERTIFICATE, THE EVIDENCE AND DETAILED PROCEDURES USED IN ESTABLISHING THE CORNER POSITIONS AND MONUMENTATION FOUND OR PLACED.)

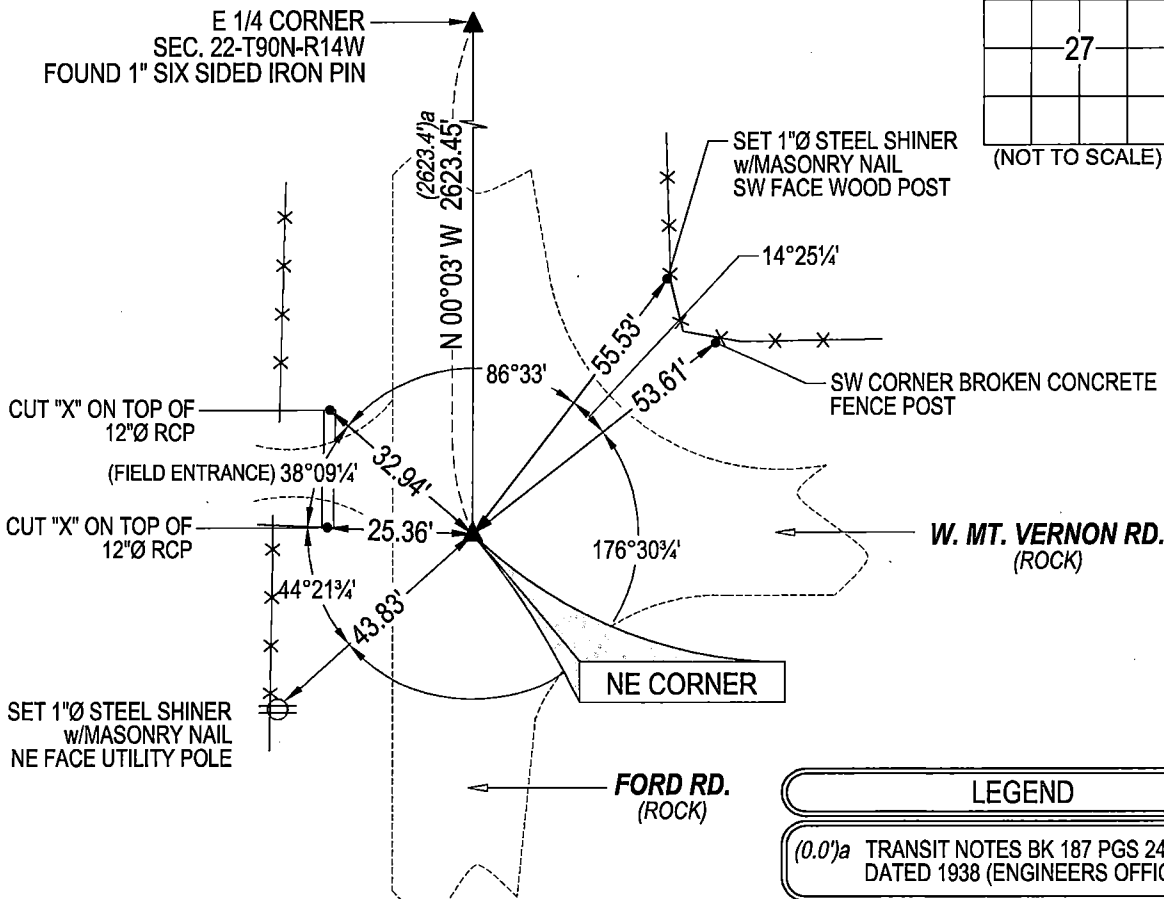
MONUMENT DESCRIPTION AND REMARKS:

MONUMENTATION HAS CHANGED. SURVEY COMPLETED IN THE SE 1/4 OF SEC. 22-T90N-R14W.

SE CORNER: BLACK HAWK COUNTY ENGINEER REFERENCE CARD DATED 04/05/1939 CALLS FOR [FOND LIMESTONE 20" x 12" x 4" IRON BAR 1/2" x 27" LOWERED EVIDENCE AND SET C.M. ON TOP 12" DEEP.]. WPA NOTES DATED 05/31/1939 CALLS FOR [AT LOCATION INDICATED BY RANDOM LINE DUG HOLE 5FT. SQ. 18" DEEP FOUND LIMESTONE 20" x 12" x 4" ALSO IRON BAR 1/2" x 27" LONG LOWERED ALL EVIDENCE IN PLACE AND SET C.M. WITH CAP MARKED SET TOP OF C.M. 12" DEEP.]. BLACK HAWK COUNTY ENGINEER REFERENCE TIES DATED 1958 DOES NOT STATE WHAT WAS FOUND OR SET. USPLSCC DATED 01/24/2013 CALLS FOR [PREVIOUS RECORD INDICATES CONCRETE MONUMENT w/CAP. FOUND 1/2" IRON ROD AT THE INTERSECTION OF THE ROAD CENTERLINES.]. SEARCHED AREA WITH MAGNETIC DETECTOR AND EXCAVATED AND FOUND CONCRETE MONUMENT w/BRASS CAP 0.5' DEEP WITH 1/2" IRON TWIST PIN ON EAST SIDE 0.05' ABOVE SAID CONCRETE MONUMENT. UTILIZED SAID CONCRETE MONUMENT AS CORNER.

PLAN VIEW

(SHOW A MINIMUM OF THREE REFERENCE TIES TO DURABLE PHYSICAL OBJECTS, RELEVANT MONUMENTS AND PHYSICAL CONDITIONS THAT WILL ENABLE RECOVERY OF THE CORNER.)



(BEARINGS ARE ASSUMED)

HELLAND ENGINEERING & SURVEYING, LTD.
6109 Chancellor Drive
Cedar Falls, Iowa 50613-6916
(319)-266-0161

BRASS TAG = 4d. NAIL & 13/16"Ø BRASS TAG DRAWN BY: CDR
SHINER = 1"Ø STEEL SHINER w/MASONRY NAIL
OPC = PLASTIC CAP (O=ORANGE, R=RED, Y=YELLOW)
(00') RECORDED AS FILE NAME: 20-111-23.DWG

I hereby certify that this land surveying document was prepared and the related survey work was performed by me or under my direct personal supervision and that I am a duly licensed Professional Land Surveyor under the laws of the State of Iowa.
Kyle J. Helland 03/02/2020
Kyle J. Helland
License Number 23212
My license renewal date is December 31, 2021.
All pages or sheets are covered by this seal except:

LIST CORNERS TO BE INDEXED			
CORNER	SECTION	TOWNSHIP	RANGE
NE CORNER	27	90N	14W
SE CORNER	22	90N	14W
SW CORNER	23	90N	14W
NW CORNER	26	90N	14W