

Reserved for County Recorder's use.



Doc ID: 009996780001 Type: GEN  
Recorded: 11/10/2020 at 01:30:58 PM  
Fee Amt: \$7.00 Page 1 of 1  
Black Hawk County Iowa  
SANDIE L. SMITH RECORDER

File 2021-00010192

Kyle J. Helland, 6109 Chancellor Drive, Cedar Falls, Iowa 50613-6916, (319)-266-0161

UNITED STATES PUBLIC LAND SURVEY CORNER CERTIFICATE  
OF

LAND SURVEY MONUMENTS SITUATED IN SECTION NO. 27, TOWNSHIP NO. 90 NORTH, RANGE NO. 14 WEST OF THE FIFTH PRINCIPAL MERIDIAN, BLACK HAWK COUNTY, IOWA.  
PREVIOUSLY RECORDED IN N/A

(SHOW REASON FOR PREPARING THIS CERTIFICATE, THE EVIDENCE AND DETAILED PROCEDURES USED IN ESTABLISHING THE CORNER POSITIONS AND MONUMENTATION FOUND OR PLACED.)

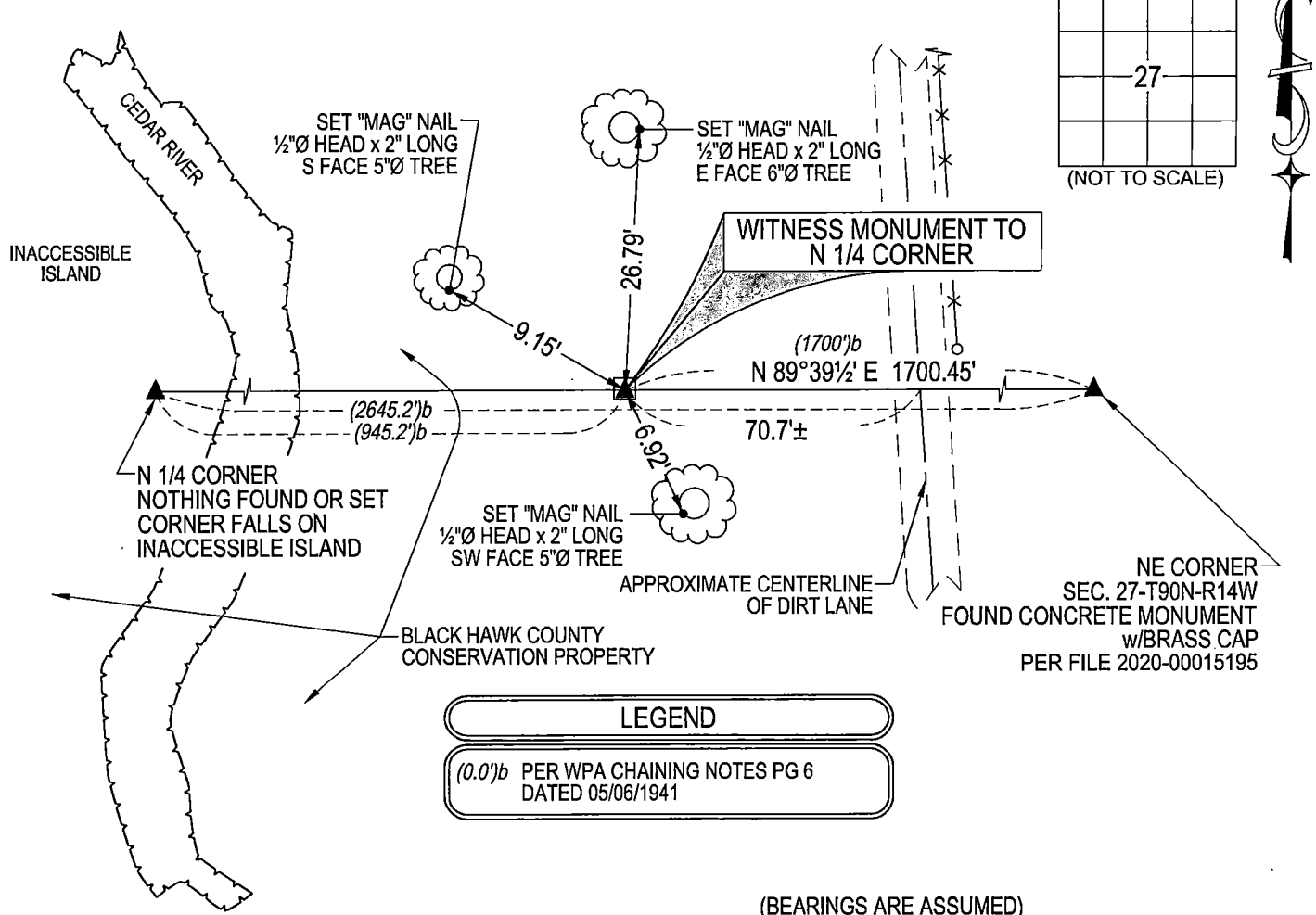
MONUMENT DESCRIPTION AND REMARKS:

NO USPLSCC ON FILE. SURVEY COMPLETED IN THE NE 1/4 OF SEC. 27-T90N-R14W.

WITNESS MONUMENT TO N 1/4 CORNER: WPA NOTES DATED 05/06/1941 CALLS FOR [THIS CORNER COMES IN RIVER. OLD BEARING TREES ARE GONE. LOOKED OVER OLD DEEDS, ABSTRACTS OF LANE & PROPERTY OF Y.M.C.A. AND FOUND THE OLD CORNER POST OF 1/4 1/4 IS THE 1/4 1/4 CORNER; THE SECRETARY OF THE Y.M.C.A. ALSO VERIFIES THIS AS SO. THEREFORE DUG & FOUND 16" IRON BRIDGE BOLT IN N. SIDE POST. THE N 1/4 27 WOULD BE AT 1322.6 X 2 = 2645.2' WEST OF NE 27 & ON RIGHT LINE OVER 1/4 1/4 CORNER POST. SET A S.C.M. ON LINE & AT STA 17+00 WEST OF NE SEC 27-90-14, THE Y.M.C.A. BOUGHT A 16.0' LANE ON N. SIDE OF LINE & PUT FENCE ON N. SIDE OF LANE. THIS CHECKS VERY CLOSE TO ON LINE ALL THE WAY". & 945.2'E N 1/4 27.] SEARCHED AREA AND FOUND CONCRETE MONUMENT 0.3' ABOVE GROUND (BRASS CAP REMOVED). UTILIZED AS WITNESS MONUMENT TO CORNER. ALSO SEARCHED FOR 1/4 1/4 CORNER PER WPA NOTES (16" BRIDGE BOLT) TO EAST AND NOTHING FOUND.

PLAN VIEW

(SHOW A MINIMUM OF THREE REFERENCE TIES TO DURABLE PHYSICAL OBJECTS, RELEVANT MONUMENTS AND PHYSICAL CONDITIONS THAT WILL ENABLE RECOVERY OF THE CORNER.)

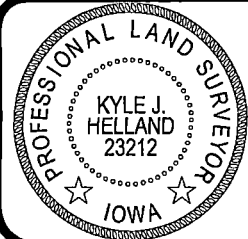


(BEARINGS ARE ASSUMED)



HELLAND ENGINEERING & SURVEYING, LTD.  
6109 Chancellor Drive  
Cedar Falls, Iowa 50613-6916  
(319)-266-0161

BRASS TAG = 4d. NAIL & 13/16" Ø BRASS TAG DRAWN BY: KDA  
SHINER = 1" Ø STEEL SHINER w/MASONRY NAIL  
OPC = PLASTIC CAP (O=ORANGE, R=RED, Y=YELLOW)  
(00') RECORDED AS FILE NAME: 20-208-128.DWG



I hereby certify that this land surveying document was prepared and the related survey work was performed by me or under my direct personal supervision and that I am a duly licensed Professional Land Surveyor under the laws of the State of Iowa.  
Kyle J. Helland  
License Number 23212  
My license renewal date is December 31, 2021.  
All pages or sheets are covered by this seal except:

LIST CORNERS TO BE INDEXED			
CORNER	SECTION	TOWNSHIP	RANGE
N 1/4 CORNER	27	90N	14W
S 1/4 CORNER	22	90N	14W