

Reserved for County Recorder's Use.



Doc ID: 009996770001 Type: GEN
Recorded: 11/10/2020 at 01:30:51 PM
Fee Amt: \$7.00 Page 1 of 1
Black Hawk County Iowa
SANDIE L. SMITH RECORDER

File 2021-00010191

Kyle J. Helland, 6109 Chancellor Drive, Cedar Falls, Iowa 50613-6916, (319)-266-0161

UNITED STATES PUBLIC LAND SURVEY CORNER CERTIFICATE
OF

LAND SURVEY MONUMENTS SITUATED IN SECTION NO. 27, TOWNSHIP NO. 90 NORTH, RANGE NO. 14 WEST OF THE FIFTH PRINCIPAL MERIDIAN, BLACK HAWK COUNTY, IOWA.
PREVIOUSLY RECORDED IN N/A

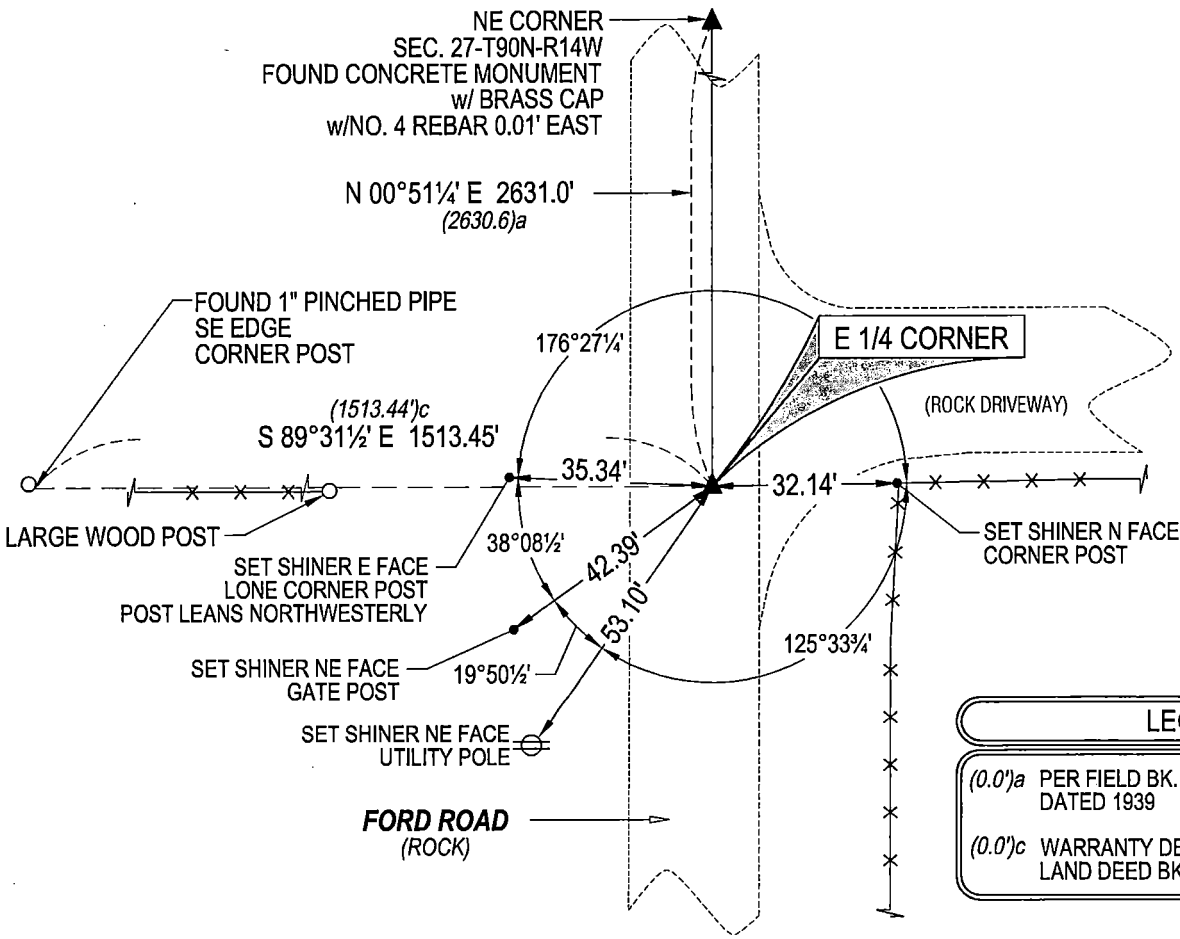
(SHOW REASON FOR PREPARING THIS CERTIFICATE, THE EVIDENCE AND DETAILED PROCEDURES USED IN ESTABLISHING THE CORNER POSITIONS AND MONUMENTATION FOUND OR PLACED.)

MONUMENT DESCRIPTION AND REMARKS:
NO USPLSCC ON FILE. SURVEY COMPLETED IN THE NE 1/4 OF SEC. 27-T90N-R14W.

E 1/4 CORNER: WPA NOTES PG. 31 DATED 5/31/1939 CALLS FOR [AT LOCATION INDICATED BY RANDOM LINE DUG HOLE 5 FT. SQ. 18" DEEP. FOUND WOOD STAKE 1"x3"x17". LOWERED ALL EVIDENCE IN PLACE AND SET C.M. WITH CAP MARKED 27] 26 SET TOP OF C.M. 12" DEEP.] BLACK HAWK COUNTY ENGINEER TIES DATED 12/1958 CALLS FOR [CONCRETE MONUMENT]. SEARCHED AREA WITH MAGNETIC DETECTOR, EXCAVATED 2'±Ø x 3'± DEEP HOLE, PROBED IN ALL DIRECTIONS, AND NOTHING FOUND. BASED ON ELEVATIONS IN THE SAID BLACK HAWK COUNTY TIES DATED 1958 THIS MONUMENT WOULD BE 0.2' ABOVE ROAD SURFACE. BELIEVE MONUMENT REMOVED BY ROAD WORK. THEREFORE, SET NO. 4 REBAR w/OPC #23212 IN LINE WITH FENCES RUNNING EAST AND WEST AND AT A RECORDED DISTANCE 1513.44' EAST OF A FOUND PINCHED PIPE PER LAND DEED BOOK 559 PAGE 116 DATED 02/19/1991. DISTANCE FITS WITHIN REASON TO THE NE CORNER OF SEC. 27 OF STATIONING PER FIELD BOOK 187 PAGES 24-31 DATED 1939.

PLAN VIEW

(SHOW A MINIMUM OF THREE REFERENCE TIES TO DURABLE PHYSICAL OBJECTS, RELEVANT MONUMENTS AND PHYSICAL CONDITIONS THAT WILL ENABLE RECOVERY OF THE CORNER.)



LEGEND

(0.0')a PER FIELD BK. #187 PGS 24-31 DATED 1939

(0.0')c WARRANTY DEED DATED 02/19/1991 LAND DEED BK 559 PG. 116

(BEARINGS ARE ASSUMED)

HES HELLAND ENGINEERING & SURVEYING, LTD.
6109 Chancellor Drive
Cedar Falls, Iowa 50613-6916
(319)-266-0161

BRASS TAG = 4d. NAIL & 13/16"Ø BRASS TAG DRAWN BY: KDA
SHINER = 1"Ø STEEL SHINER w/MASONRY NAIL
OPC = PLASTIC CAP (O=ORANGE, R=RED, Y=YELLOW)
(00') RECORDED AS FILE NAME: 20-208-22.DWG

PROFESSIONAL LAND SURVEYOR
KYLE J. HELLAND
23212
IOWA

I hereby certify that this land surveying document was prepared and the related survey work was performed by me or under my direct personal supervision and that I am a duly licensed Professional Land Surveyor under the laws of the State of Iowa.
Kyle J. Helland 11/15/2020
License Number 23212
My license renewal date is December 31, 2021.
All pages or sheets are covered by this seal except:

LIST CORNERS TO BE INDEXED

CORNER	SECTION	TOWNSHIP	RANGE
E 1/4 CORNER	27	90N	14W
W 1/4 CORNER	26	90N	14W