

INDEX

BLACK HAWK COUNTY, IOWA:ss

FEE BOOK # 2006 28095

PROOF

FILED FOR RECORD MAY 23 2006 AT 4:00P. M. FEE 1-5.00-1.00X

COMPARED

Patricia A. Hess

BLACK HAWK COUNTY RECORDER

HELLAND ENGINEERING & SURVEYING LTD

Paul H. Helland, 1107 Technology Parkway, Cedar Falls, Iowa 50613-6951, (319)-266-0161

UNITED STATES PUBLIC LAND SURVEY CORNER CERTIFICATE
OF

LAND SURVEY MONUMENTS SITUATED IN SECTION NO. 26, TOWNSHIP NO. 90 NORTH, RANGE NO. 14 WEST OF THE FIFTH PRINCIPAL MERIDIAN, BLACK HAWK COUNTY, IOWA.

PREVIOUSLY RECORDED IN _____

(SHOW REASON FOR PREPARING THIS CERTIFICATE, THE EVIDENCE AND DETAILED PROCEDURES USED IN ESTABLISHING THE CORNER POSITIONS AND MONUMENTATION FOUND OR PLACED.)

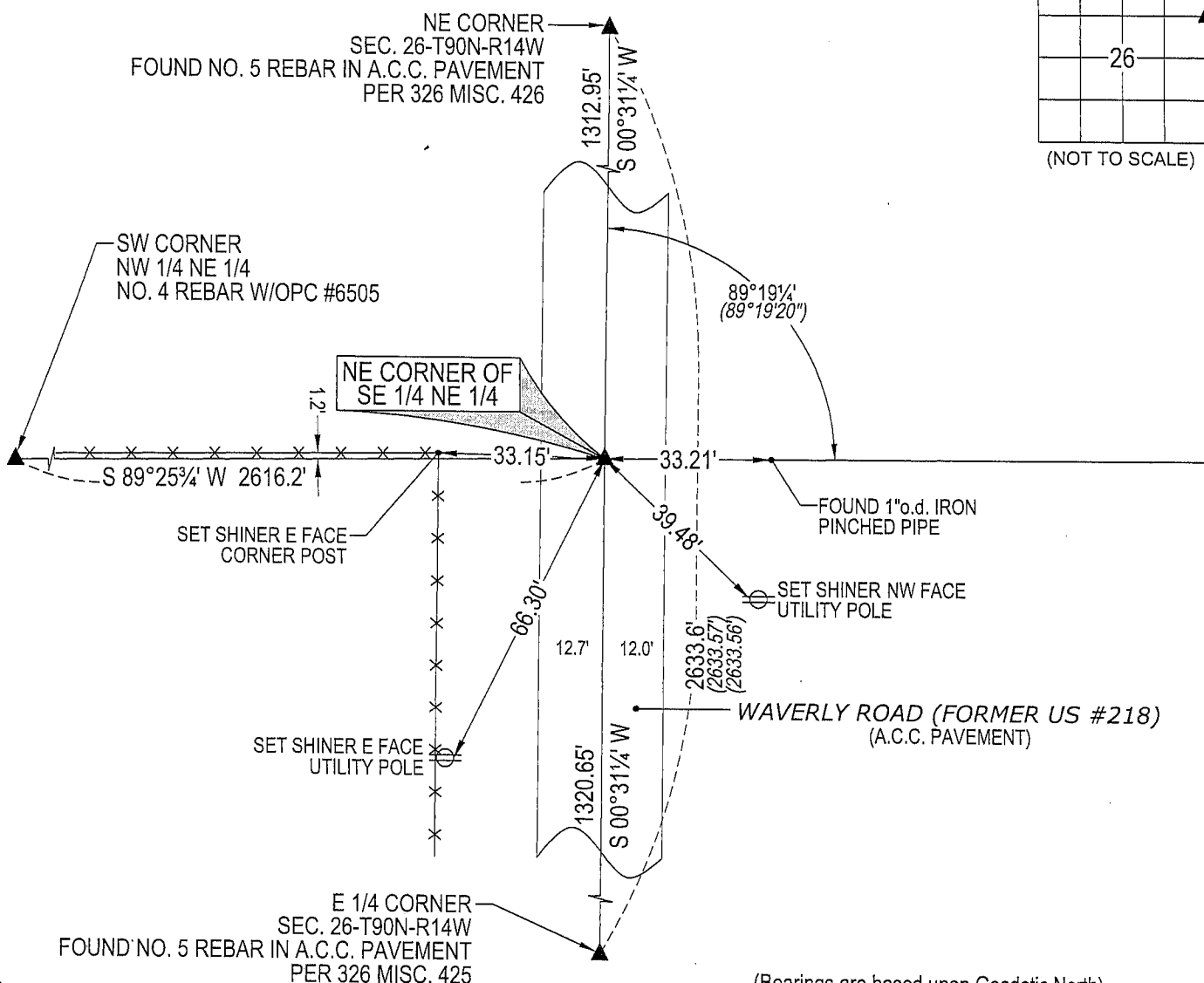
MONUMENT DESCRIPTION AND REMARKS:

NO USPLSCC ON FILE. SURVEY COMPLETED IN THE NE 1/4 OF THE NE 1/4 OF SEC. 26-T90N-R14W.

→ **NE CORNER OF SE 1/4 NE 1/4:** NO BLACK HAWK COUNTY ENGINEER REFERENCE TIES AVAILABLE. SET "COTTON GIN SPIKE" IN A.C.C. PAVEMENT AT THE INTERSECTION OF THE WESTERLY EXTENSION OF THE SOUTH LINE OF THE NW 1/4 NW 1/4 OF SEC. 25-T90N-R14W THROUGH A FOUND 1"O.D. IRON PINCHED PIPE AND A LINE BETWEEN THE NE CORNER & E 1/4 CORNER OF SEC. 26-T90N-R14W. SEE "ALTA/ASCM" SURVEY OF THE CEDAR VALLEY MEMORIAL GARDENS CEMETERY BY PAUL H. HELLAND #6505 DATED 2/1997.

PLAN VIEW

(SHOW A MINIMUM OF THREE REFERENCE TIES TO DURABLE PHYSICAL OBJECTS, RELEVANT MONUMENTS AND PHYSICAL CONDITIONS THAT WILL ENABLE RECOVERY OF THE CORNER.)

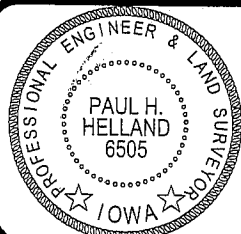


(Bearings are based upon Geodetic North)

HELLAND ENGINEERING & SURVEYING, LTD.
1107 Technology Parkway
Cedar Falls, Iowa 50613-6951
(319)-266-0161shiner = 8d nail & 1 15/16"Ø metal shiner
OPC = Plastic cap (O=orange, R=red, Y=yellow)

(00') Recorded As

File Name: 06-119c2.dwg



I hereby certify that this land surveying document was prepared and the related survey work was performed by me or under my direct personal supervision and that I am a duly licensed Land Surveyor under the laws of the State of Iowa.

Paul H. Helland 5/14/06
Paul H. Helland
License Number 6505
My license renewal date is December 31, 2007.
All pages or sheets are covered by this seal except:

LIST CORNERS TO BE INDEXED

CORNER	SECTION	TOWNSHIP	RANGE
NE CORNER SE 1/4 NE 1/4	26	90N	14W

Rec