

HELLAND ENGINEERING & SURVEYING LTD

Paul H. Helland, 1107 Technology Parkway, Cedar Falls, Iowa 50613-6951, (319)-266-0161

UNITED STATES PUBLIC LAND SURVEY CORNER CERTIFICATE  
OF

LAND SURVEY MONUMENTS SITUATED IN SECTION NO. 26, TOWNSHIP NO. 90 NORTH, RANGE NO. 14 WEST OF THE FIFTH PRINCIPAL MERIDIAN, BLACK HAWK COUNTY, IOWA.  
PREVIOUSLY RECORDED IN \_\_\_\_\_

(SHOW REASON FOR PREPARING THIS CERTIFICATE, THE EVIDENCE AND DETAILED PROCEDURES USED IN ESTABLISHING THE CORNER POSITIONS AND MONUMENTATION FOUND OR PLACED.)

MONUMENT DESCRIPTION AND REMARKS:

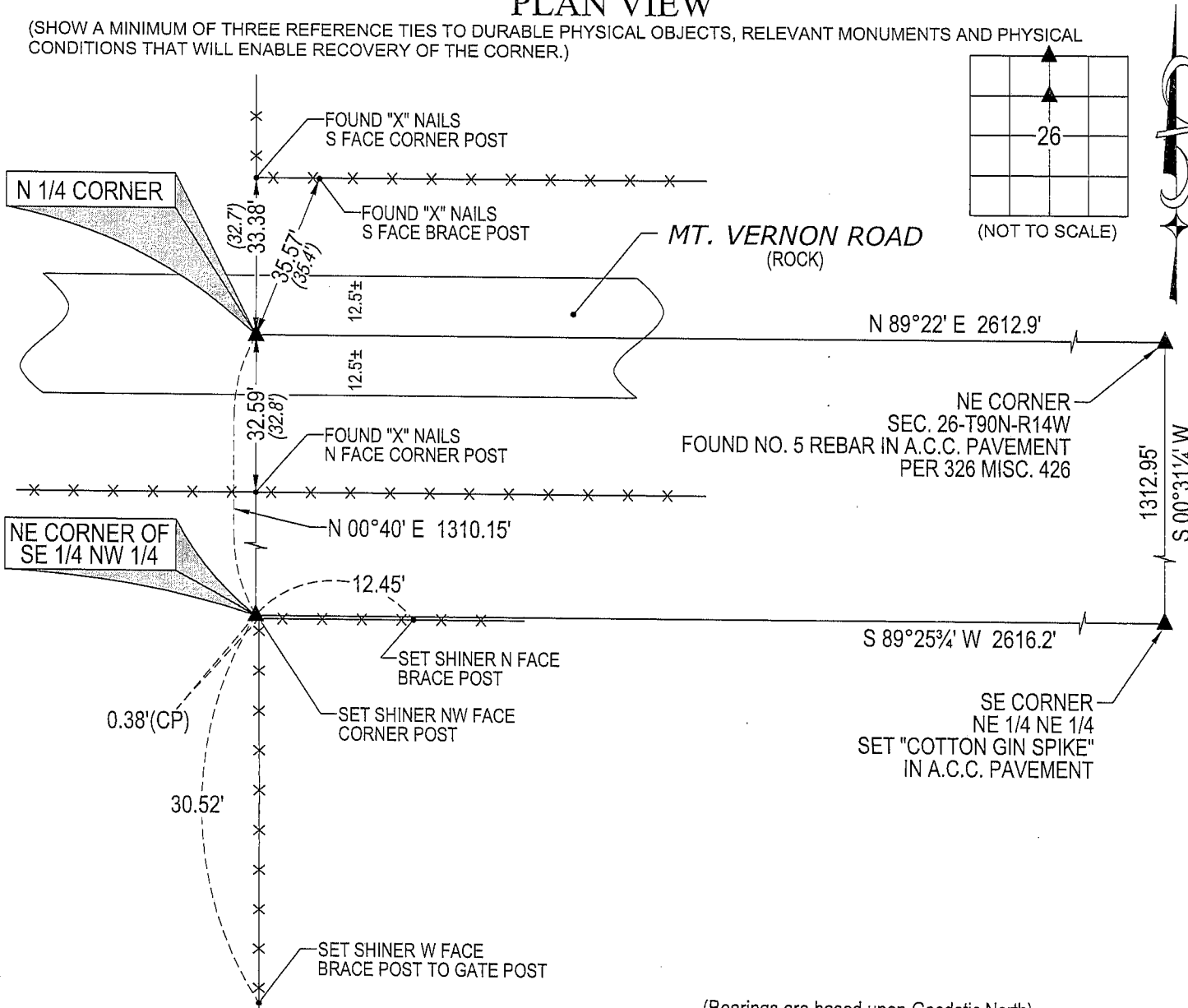
NO USPLSCC ON FILE. SURVEY COMPLETED IN THE NE 1/4 OF THE NE 1/4 OF SEC. 26-T90N-R14W.

→ **N 1/4 CORNER:** BLACK HAWK COUNTY ENGINEER REFERENCE TIES DATED 1958 CALLS FOR [S.C.M.]. FOUND NO. 8 REBAR (1.4' LONG) 1.2' DEEP ABOVE A STANDARD CONCRETE MONUMENT W/BRASS CAP 2.6' DEEP. RAISED SAID NO. 8 REBAR TO A DEPTH OF 0.4'±.

→ **NE CORNER SE 1/4 NW 1/4:** NO BLACK HAWK COUNTY ENGINEER REFERENCE TIES AVAILABLE. SET NO. 4 REBAR W/OPC #6505 AT INTERSECTION OF FENCES RUNNING EAST AND SOUTH.

PLAN VIEW

(SHOW A MINIMUM OF THREE REFERENCE TIES TO DURABLE PHYSICAL OBJECTS, RELEVANT MONUMENTS AND PHYSICAL CONDITIONS THAT WILL ENABLE RECOVERY OF THE CORNER.)



(Bearings are based upon Geodetic North)

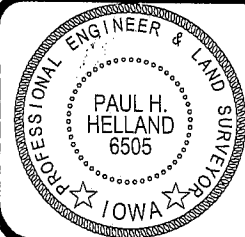


HELLAND ENGINEERING & SURVEYING, LTD.  
1107 Technology Parkway  
Cedar Falls, Iowa 50613-6951  
(319)-266-0161

shiner = 8d nail & 1 15/16"Ø metal shiner  
OPC = Plastic cap (O=orange, R=red, Y=yellow)

(00') Recorded As

File Name: 06-119c1.dwg



I hereby certify that this land surveying document was prepared and the related survey work was performed by me or under my direct personal supervision and that I am a duly licensed Land Surveyor under the laws of the State of Iowa.

*Paul H. Helland 5/12/07*  
Paul H. Helland  
License Number 6505  
My license renewal date is December 31, 2007.  
All pages or sheets are covered by this seal except:

LIST CORNERS TO BE INDEXED

CORNER	SECTION	TOWNSHIP	RANGE
N 1/4 CORNER	26	90N	14W
NE CORNER SE 1/4 NW 1/4	26	90N	14W