

File **2019-00012997**

Prepared by & Return to: Herold - Reicks Surveying, 2206 East Bremer Avenue, Waverly, IA 50677, Ph. 319-483-5187

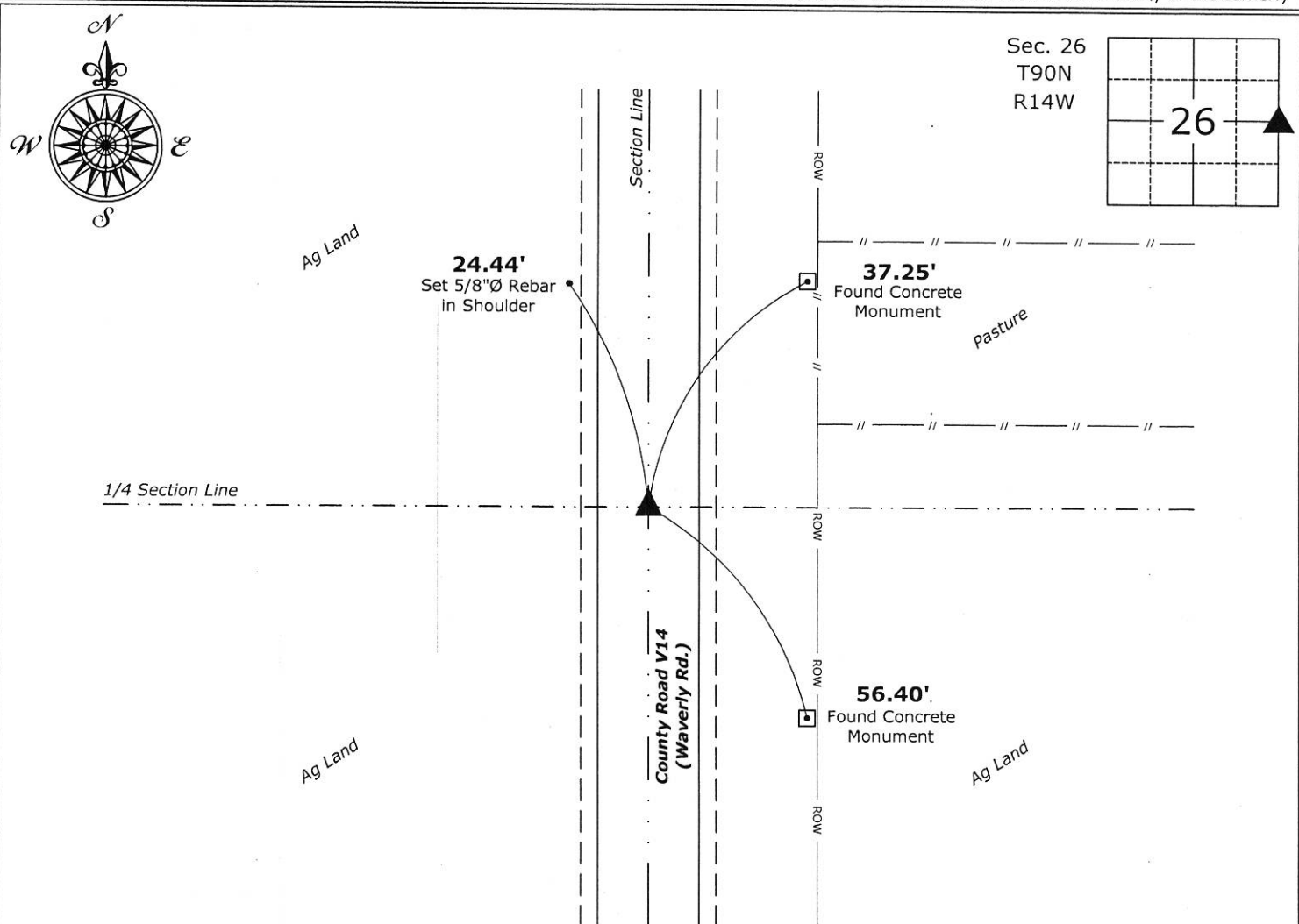
Land Survey Monument situated in
Section **26**, Township **90** North, Range **14** West of the Fifth Principal Meridian, **Black Hawk** County, Iowa.
On file in **Book 326, Page 425** in the County Recorder's Office.

 $\{$

- ☐ There is no certificate on file for this corner.
☐ There are no longer three valid ties of record.
☐ There are changes to reference ties of record.
☒ There is change of monumentation of record.
☐ To clarify description of record monument (ties).

East 1/4 Corner: The previously recorded Section Corner Certificate, indicates Reset 5/8"Ø Rebar, said monument was removed during highway reconstruction. The position of said Section Corner was reestablished with information obtained from previously recorded Section Corner Certificate. Set 1"Ø Bronze Survey Marker PLS 22468 at said position to perpetuate the Corner. Corner reset in conjunction with Project No. FM-C007(150)--55-07.

(Show a minimum of three reference ties to durable physical objects, relevant monuments and physical conditions that will enable recovery of the corner.)



East 1/4 Corner of Section 26-90-14
Set 1"Ø Bronze Survey Marker PLS 22468



I hereby certify that this land surveying document was prepared and the related survey work was performed by me or under my direct personal supervision and that I am a duly licensed Land Surveyor under the laws of the State of Iowa.

Isaiah M. Reicks 2-25-19

License number 22468
My license renewal date is December 31, 2019.
Sheets covered by this seal: Individual sheet only

Corner	Section	Twp.	Range
E 1/4	26	90	14

Project Number: 2018-855

FB; Black Hawk 10, Pg. 37