



Doc ID: 005245720001 Type: GEN
Kind: CORNER
Recorded: 08/14/2013 at 09:31:25 AM
Fee Amt: \$7.00 Page 1 of 1
Black Hawk County Iowa
JUDITH A MCCARTHY RECORDER

File 2014-00003431

env* WAYNE CLAASSEN ENGINEERING AND SURVEYING, INC.
P.O. BOX 898 WATERLOO, IOWA 50704-0898

PHONE: (VOICE) 319-235-6294
(FAX) 319-235-0028

UNITED STATES PUBLIC LAND SURVEY CORNER CERTIFICATE

Land Survey Monuments situated in Section 25, Township 90 North, Range 14 West, of the Fifth Principal Meridian, Black Hawk County, Iowa.

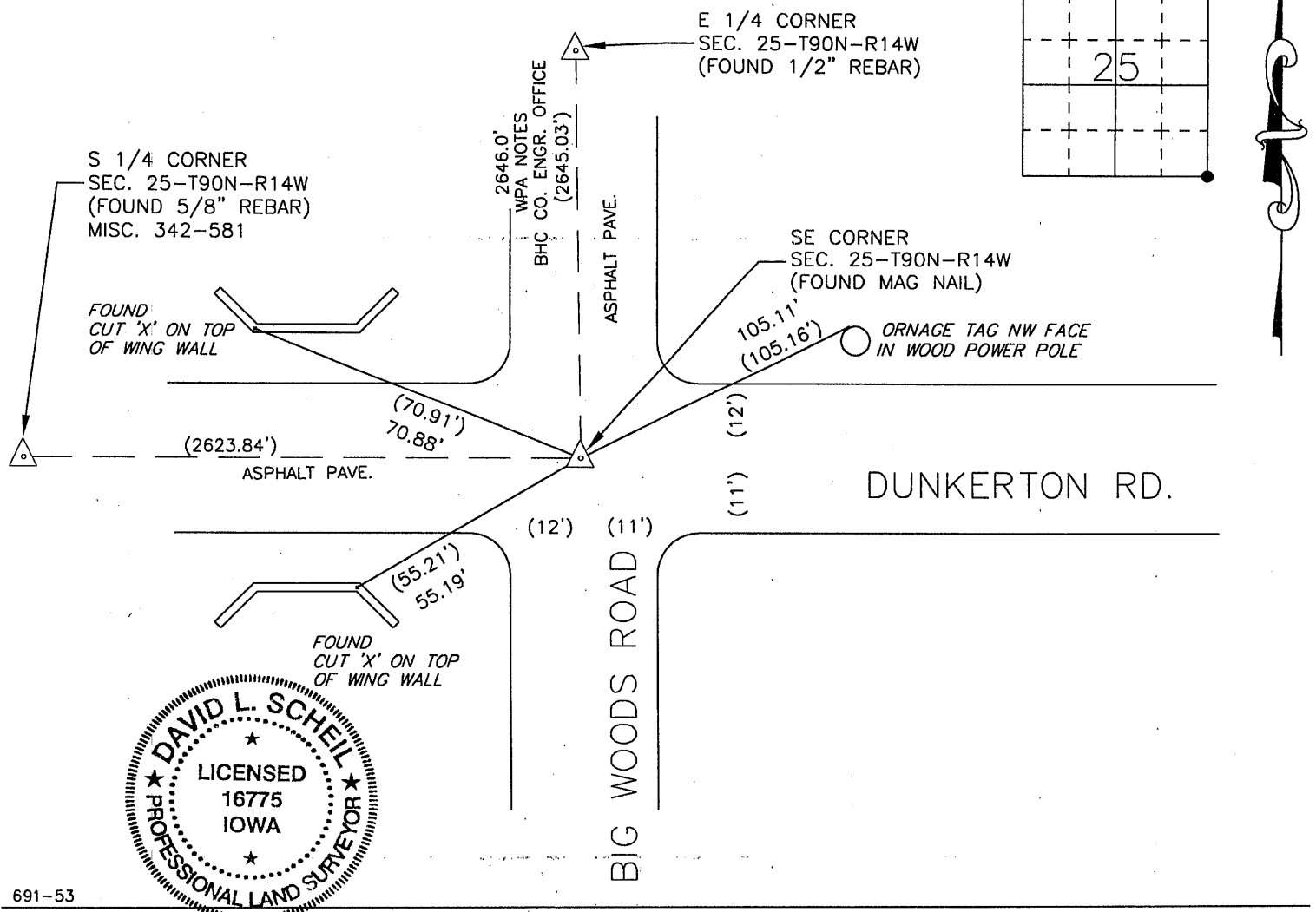
Previously recorded in 345-740 in County Recorder's Office.
(book, page, document number, etc.)

Monument Description and Remarks

Found mag nail instead of "RR Spike" from above reference. Mag nail reasonably matches ties from above reference. This certificate is being filed because the monumentation of the corner has changed.

000.00 DENOTES RECORD DIMENSION
(000.00) DENOTES FIELD DIMENSION

PLAN - VIEW



691-53

I hereby certify that this land surveying document was prepared and the related survey work was performed by me or under my direct personal supervision and that I am a duly Licensed Land Surveyor under the laws of the State of Iowa.

Signature:

David L. Scheil, L.S.

Date: MAY 15, 2013 Lic. No. 16775

Pages or Sheets Covered by this Seal: THIS SHEET ONLY.

My license renewal date is December 31, 2014

SEAL

List Corners to be Indexed

Corners	Section	Twp	Range
SE CORNER,	25	90 N	14 W
NE CORNER,	36	90 N	14 W
NW CORNER,	31	90 N	13 W
SW CORNER,	30	90 N	13 W

33.005m

(7.00)

1