

Env
Prepared by & Return to: Herold - Reicks Surveying, 2206 East Bremer Avenue, Waverly, IA 50677, Ph. 319-483-5187

United States Public Land Survey Corner Certificate

Land Survey Monument situated in
Section **25**, Township **90** North, Range **14** West of the Fifth Principal Meridian, **Black Hawk** County, Iowa.
Not on file in the County Recorder's office.

This certificate is being prepared in compliance
with Iowa Code Chapter 355.11 because:

- ☒ {
- ☐ There is no certificate on file for this corner.
☐ There are no longer three valid ties of record.
☐ There are changes to reference ties of record.
☐ There is change of monumentation of record.
☐ To clarify description of record monument (ties).

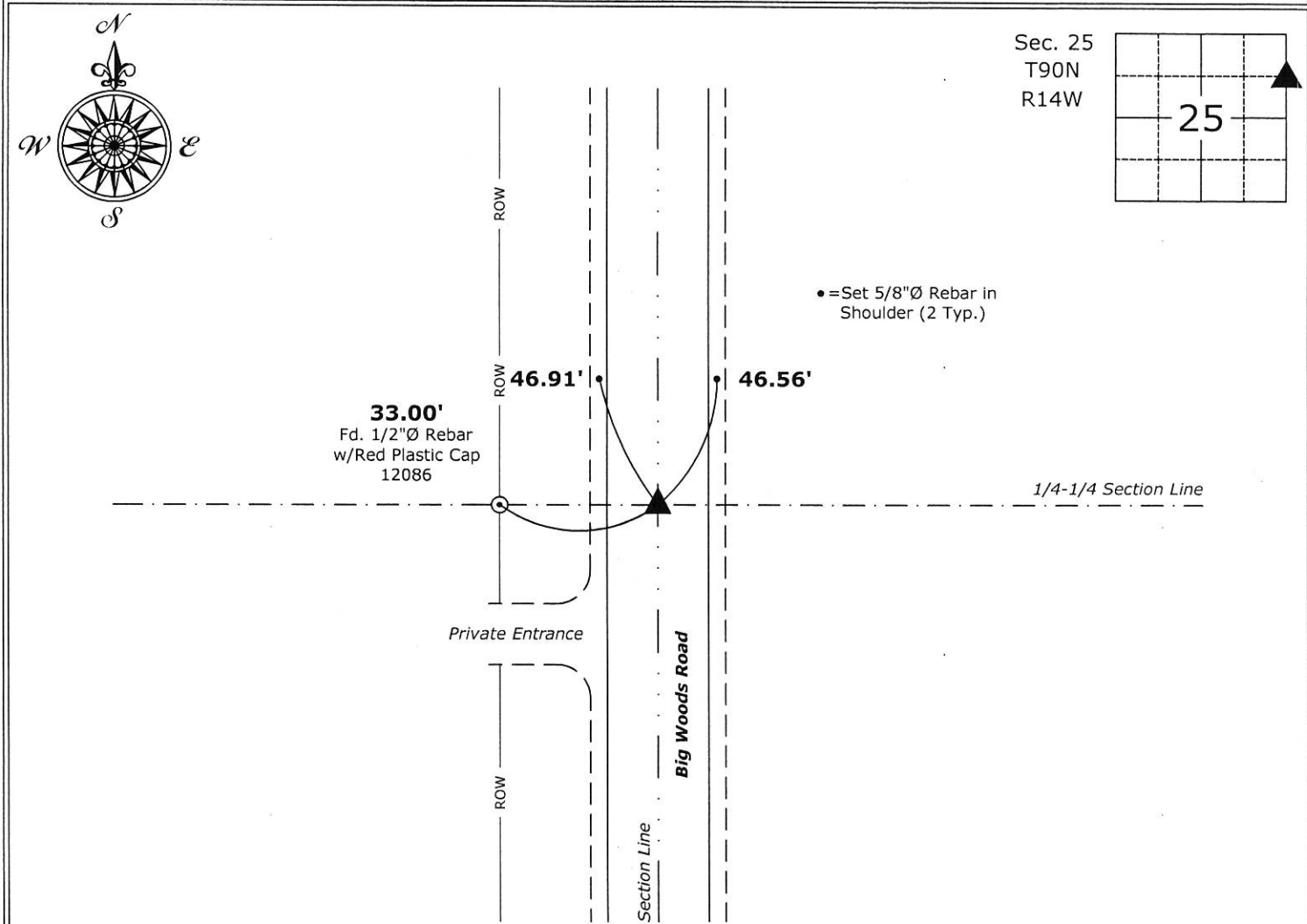
Monument Description and Remarks:

Southeast Corner NE 1/4-NE 1/4: Set 5/8"Ø rebar with 2"Ø aluminum cap PLS 22468 equidistant and online
between the Northeast and East 1/4 Corners of said Section.

An extensive search of all of the records within the County offices was performed as part of the section corner
recovery, No records were located of the perpetuation of a monument at this corner.

Plan View

(Show a minimum of three reference ties to durable physical objects, relevant monuments and physical conditions that will enable recovery of the corner.)



Southeast Corner NE 1/4-NE 1/4 of Section 25-90-14
Set 5/8"Ø rebar w/2"Ø aluminum cap PLS 22468



I hereby certify that this land surveying document
was prepared and the related survey work was
performed by me or under my direct personal
supervision and that I am a duly licensed Land
Surveyor under the laws of the State of Iowa.
Isaiah M. Reicks
Isaiah M. Reicks Date: **1-29-19**
License number 22468
My license renewal date is December 31, 2019.
Sheets covered by this seal: Individual sheet only

List Corner to be Indexed			
Corner	Section	Twp.	Range
SE-NE-NE	25	90	14
Project Number: 2018-569			
FB: Black Hawk 10, Pgs. 33-34			