

Doc ID: 005245740001 Type: GEN
Kind: CORNER
Recorded: 08/14/2013 at 09:32:24 AM
Fee Amt: \$7.00 Page 1 of 1
Black Hawk County Iowa
JUDITH A MCCARTHY RECORDER
File **2014-00003433**

WAYNE CLAASSEN ENGINEERING AND SURVEYING, INC.
P.O. BOX 898 WATERLOO, IOWA 50704-0898

PHONE: (VOICE) 319-235-6294
(FAX) 319-235-0028

UNITED STATES PUBLIC LAND SURVEY CORNER CERTIFICATE

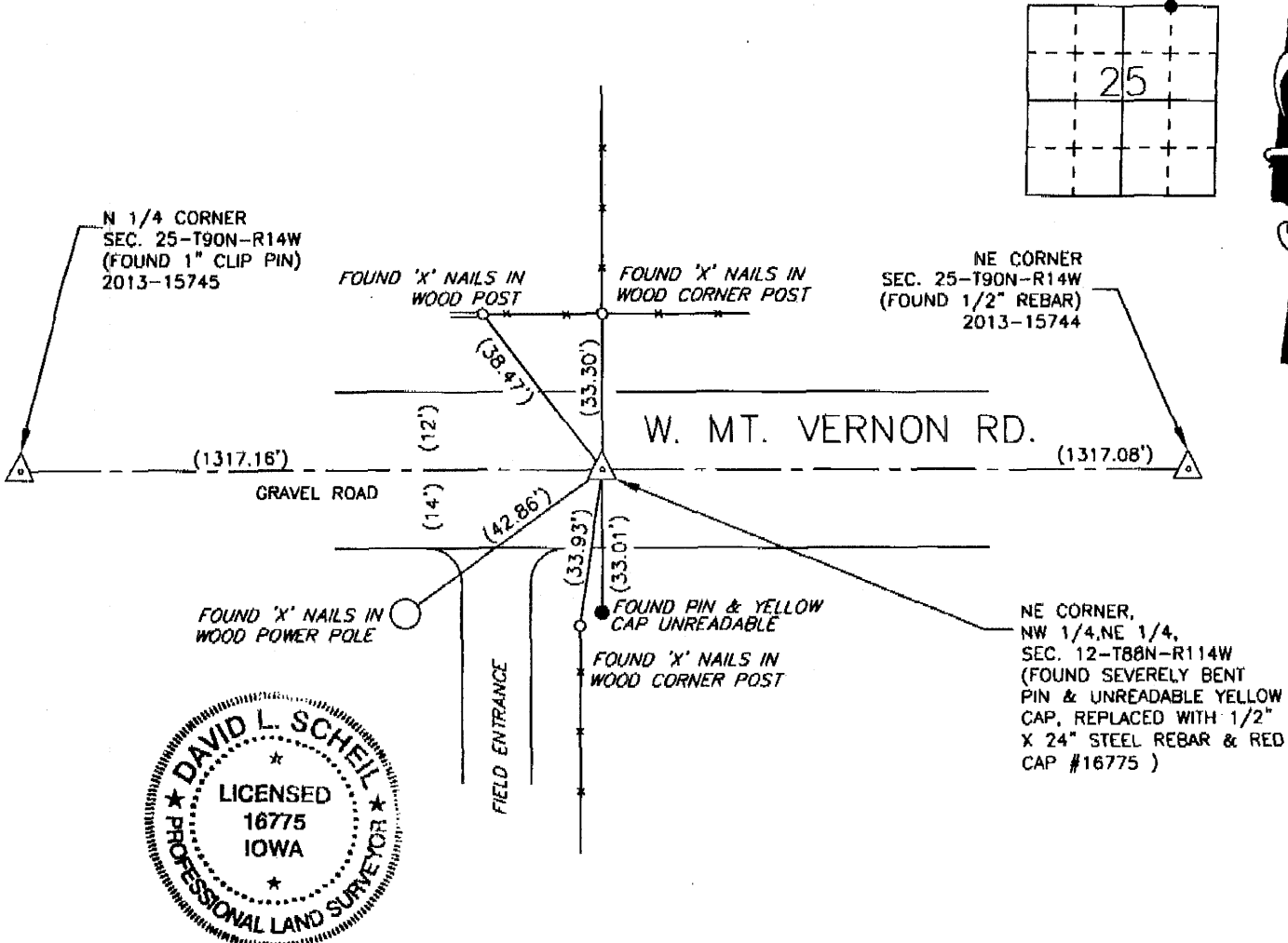
Land Survey Monuments situated in Section 25, Township 90 North, Range 14 West, of the Fifth Principal Meridian, Black Hawk County, Iowa.

Previously recorded in _____ in County Recorder's Office.
(book, page, document number, etc.)

Monument Description and Remarks

No field notes from Black Hawk County Engineer's Office available. Found severely bent pin & yellow unreadable cap that is reasonably at the mid point between the North 1/4 corner and the Northeast corner of this section. Removed bent pin and cap and replaced with a 1/2" x 24" steel rebar and red cap #16775.
This certificate was filed because there is no certificate on file.

PLAN - VIEW



691-53

I hereby certify that this land surveying document was prepared and the related survey work was performed by me or under my direct personal supervision and that I am a duly Licensed Land Surveyor under the laws of the State of Iowa.

Signature: David L. Scheil
David L. Scheil, S

Date: MAY 15, 2013 Lic. No. 16775

Pages or Sheets Covered by this Seal: THIS SHEET ONLY.

My license renewal date is December 31, 2014

SEAL

List Corners to be Indexed

Corners	Section	Twp	Range
NE CORNER,	25	90 N	14 W
NW 1/4, NE 1/4			
NW CORNER,	25	90 N	14 W
NE 1/4, NE 1/4			
SE CORNER,	24	90 N	14 W
SW 1/4, SE 1/4			
SW CORNER,	24	90 N	14 W
SE 1/4, SE 1/4			