

HELLAND ENGINEERING & SURVEYING, LTD. 1107 TECHNOLOGY PKWY CEDAR FALLS IA 50613-6951

Paul H. Helland, 1107 Technology Parkway, Cedar Falls, Iowa 50613-6951, (319)-266-0161

## UNITED STATES PUBLIC LAND SURVEY CORNER CERTIFICATE OF

LAND SURVEY MONUMENTS SITUATED IN SECTION NO. 25, TOWNSHIP NO. 90 NORTH, RANGE  
NO. 14 WEST OF THE FIFTH PRINCIPAL MERIDIAN, BLACK HAWK COUNTY, IOWA.

PREVIOUSLY RECORDED IN BOOK \_\_\_\_\_, PAGE \_\_\_\_\_.

(SHOW REASON FOR PREPARING THIS CERTIFICATE, THE EVIDENCE AND DETAILED PROCEDURES USED IN ESTABLISHING THE  
CORNER POSITIONS AND MONUMENTATION FOUND OR PLACED.)

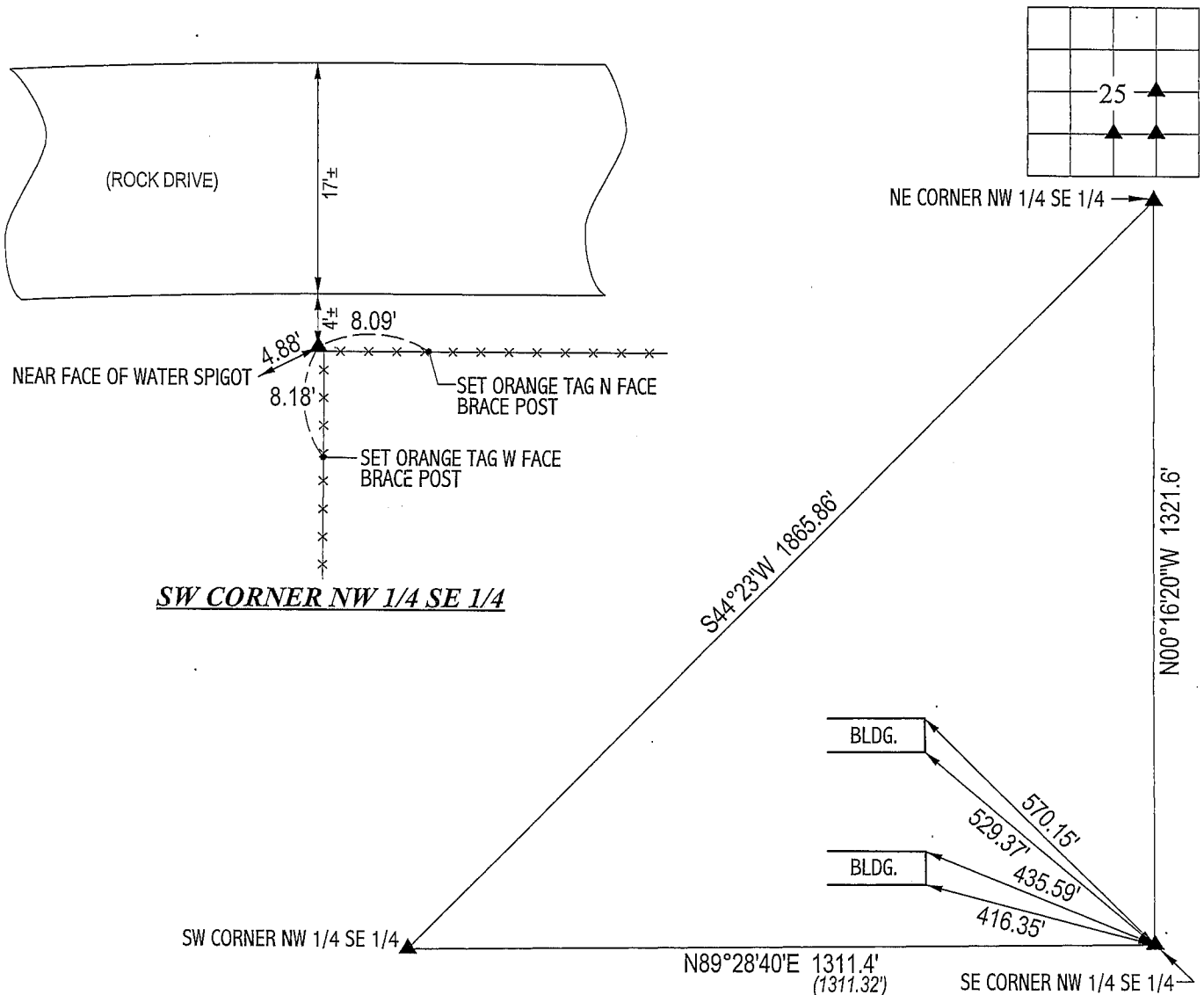
### MONUMENT DESCRIPTION AND REMARKS:

NO CORNER CERTIFICATE ON FILE. SURVEY DONE IN SW 1/4 & SE 1/4 OF SEC. 25-T90N-R14W.

- NE CORNER NW 1/4 SE 1/4: NO BLACK HAWK COUNTY ENGINEER REFERENCE TIES. FOUND PINCHED PIPE 0.6' DEEP. NO GERMAINE  
PHYSICAL REFERENCE TIES AVAILABLE.
- SE CORNER NW 1/4 SE 1/4: NO BLACK HAWK COUNTY ENGINEER REFERENCE TIES. FOUND NO. 4 REBAR SET BY CES 1987 PER PLAT  
OF SURVEY RECORDED IN 277 MISC. 549.
- SW CORNER NW 1/4 SE 1/4: NO BLACK HAWK COUNTY ENGINEER REFERENCE TIES. FOUND NO. 4 REBAR w/YELLOW CAP #3362.

### PLAN VIEW

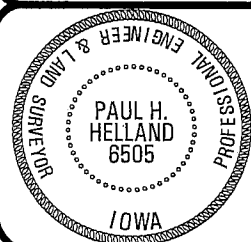
(SHOW A MINIMUM OF THREE REFERENCE TIES TO DURABLE PHYSICAL OBJECTS, RELEVANT MONUMENTS AND PHYSICAL  
CONDITIONS THAT WILL ENABLE RECOVERY OF THE CORNER.)



HELLAND ENGINEERING & SURVEYING, LTD.  
1107 Technology Parkway  
Cedar Falls, Iowa 50613-6951  
(319)-266-0161

(00.00') - RECORDED AS

FILE NAME: 02-341C2.DRG



I hereby certify that this land surveying document was prepared  
and the related survey work was performed by me or under my  
direct personal supervision and that I am a duly licensed Land  
Surveyor under the laws of the State of Iowa.

*Paul H. Helland 3/10/03*  
Paul H. Helland  
License Number 6505

My license renewal date is December 31, 2003.  
All pages or sheets are covered by this seal except:

### LIST CORNERS TO BE INDEXED

CORNER	SECTION	TOWNSHIP	RANGE
--------	---------	----------	-------

NE CORNER	25	90N	14W
NW 1/4 SE 1/4			
SE CORNER	25	90N	14W
NW 1/4 SE 1/4			
SW CORNER	25	90N	14W
NW 1/4 SE 1/4			

*Rec*