

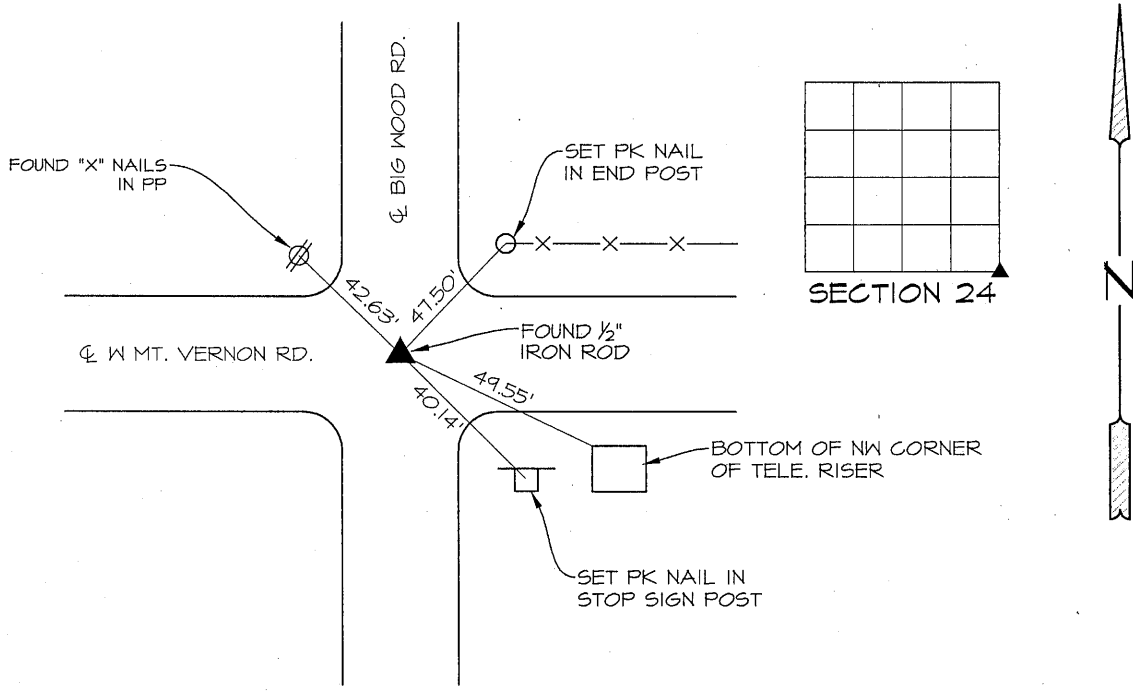
PREPARED BY PATRICK SHEPARD: CIVIL ENGINEERING CONSULTANTS, INC. - 2400 86th ST. #12 -DES MOINES, IOWA 50322

UNITED STATES PUBLIC LAND SURVEY CORNER CERTIFICATE
OF

LAND SURVEY MONUMENTS SITUATED IN SECTION 24, TOWNSHIP 90 NORTH, RANGE 14 WEST, OF THE FIFTH PRINCIPAL MERIDIAN, BLACK HAWK COUNTY, IOWA. PREVIOUS RECORD FOUND AT THE BLACK HAWK COUNTY RECORDER'S OFFICE IN BOOK 305 MISC. PAGE 162.

MONUMENT DESCRIPTION AND REMARKS:
SE CORNER, 24-90-14 FOUND 1/2" IRON ROD AND TWO TIES THAT MATCH PREVIOUS RECORD. THIS CERTIFICATE IS BEING PREPARED TO PROVIDE ADDITIONAL TIES.

PLAN -VIEW



LIST CORNERS TO BE INDEXED

CORNERS	SECTION	TWP.	RANGE
SE CORNER	24	90	14
SW CORNER	19	90	13
NE CORNER	25	90	14
NW CORNER	30	90	13

LICENSED LAND SURVEYOR

PATRICK J. SHEPARD

12265

IOWA

I HEREBY CERTIFY THAT THIS LAND SURVEYING DOCUMENT WAS PREPARED AND THE RELATED SURVEY WORK WAS PERFORMED BY ME OR UNDER MY DIRECT PERSONAL SUPERVISION AND THAT I AM A DULY LICENSED LAND SURVEYOR UNDER THE LAWS OF THE STATE OF IOWA.

PS Shepard 1-25-13

PATRICK J. SHEPARD, IOWA LICENSE NO. 12265 DATE MY LICENSE RENEWAL DATE IS DECEMBER 31, 2013

PAGES OR SHEETS COVERED BY THIS SEAL:

THIS SHEET ONLY