

\* Paul H. Helland, 1107 Technology Parkway, Cedar Falls, Iowa 50613-6951, (319)-266-0161

# UNITED STATES PUBLIC LAND SURVEY CORNER CERTIFICATE OF

LAND SURVEY MONUMENTS SITUATED IN SECTION NO. 24, TOWNSHIP NO. 90 NORTH, RANGE NO. 14 WEST OF THE FIFTH PRINCIPAL MERIDIAN, BLACK HAWK COUNTY, IOWA.  
PREVIOUSLY RECORDED IN 305 MISC. 166

(SHOW REASON FOR PREPARING THIS CERTIFICATE, THE EVIDENCE AND DETAILED PROCEDURES USED IN ESTABLISHING THE CORNER POSITIONS AND MONUMENTATION FOUND OR PLACED.)

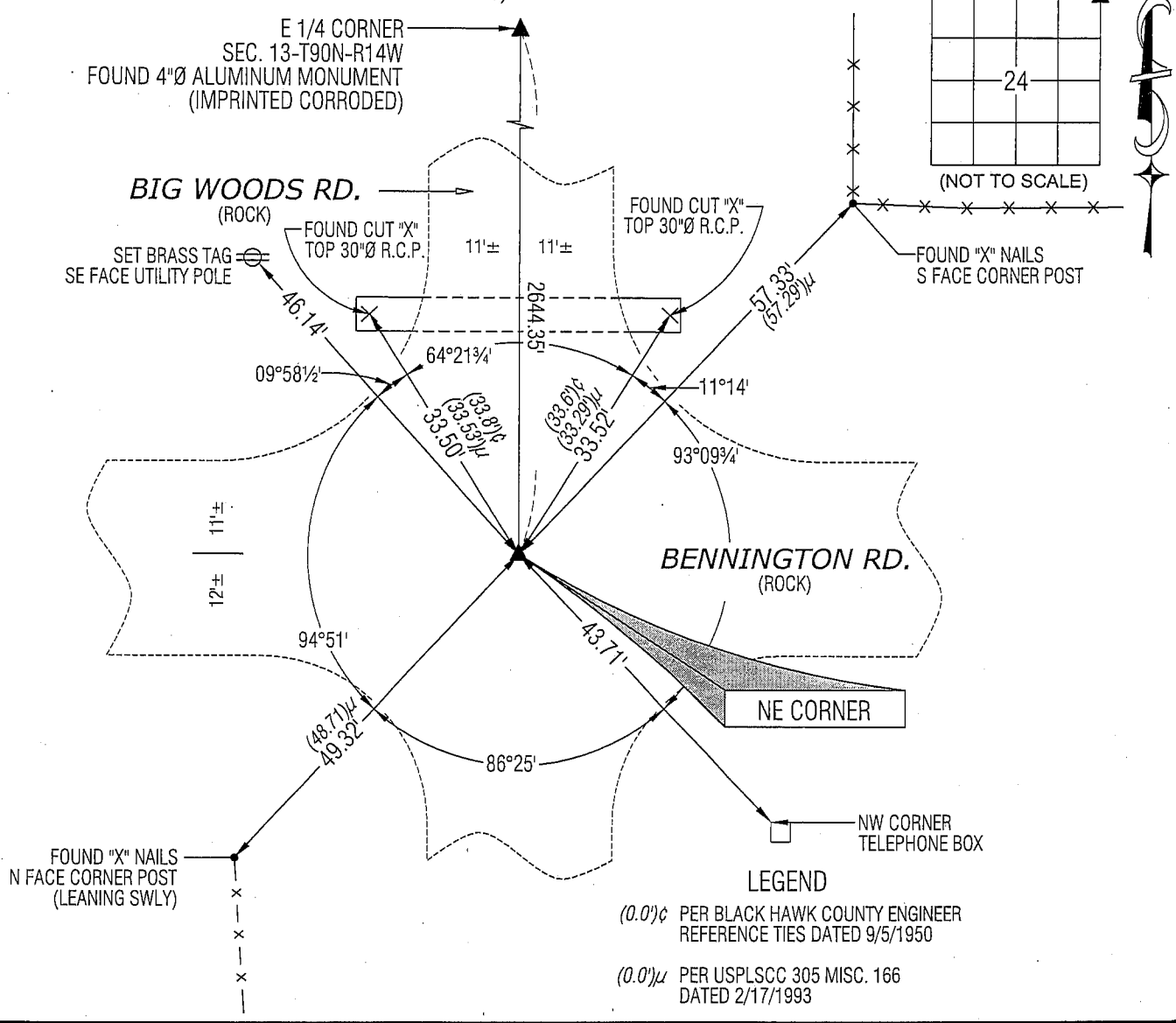
## MONUMENT DESCRIPTION AND REMARKS:

USPLSCC 305 MISC. 166 REFERENCE TIES HAVE CHANGED. SURVEY COMPLETED IN THE SE 1/4 OF SEC. 13-T90N-R14W.

→ **NE CORNER:** BLACK HAWK COUNTY ENGINEER'S REFERENCE TIES DATED 9/5/1950 CALLS FOR [IRON BAR PLACED ON MON.]. UNRECORDED PLAT OF SURVEY BY WAYNE CLAASSEN DATED 11/16/1968 CALLS FOR [FOUND MON.]. USPLSCC 305 MISC. 166 DATED 2/17/1993 CALLS FOR [FOUND 1" CLIP PIN 3" DEEP]. FOUND 1" o.d. IRON PINCHED PIPE 0.3' DEEP CORRESPONDING TO REMAINING TIES.

## PLAN VIEW

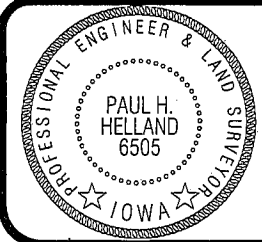
(SHOW A MINIMUM OF THREE REFERENCE TIES TO DURABLE PHYSICAL OBJECTS, RELEVANT MONUMENTS AND PHYSICAL CONDITIONS THAT WILL ENABLE RECOVERY OF THE CORNER.)



**HES**

**HELLAND ENGINEERING & SURVEYING, LTD.**  
1107 Technology Parkway  
Cedar Falls, Iowa 50613-6951  
(319)-266-0161

SHINER = 8D NAIL & 1 5/16"Ø METAL SHINER  
BRASS TAG = 13/16"Ø BRASS TAG  
OPC = PLASTIC CAP (O=ORANGE, R=RED, Y=YELLOW)  
(00') RECORDED AS FILE NAME: 09-177C1.DWG



I hereby certify that this land surveying document was prepared and the related survey work was performed by me or under my direct personal supervision and that I am a duly licensed Land Surveyor under the laws of the State of Iowa.  
*Paul H. Helland* 6/7/09  
Paul H. Helland  
License Number 6505  
My license renewal date is December 31, 2009.  
All pages or sheets are covered by this seal except:

LIST CORNERS TO BE INDEXED			
CORNER	SECTION	TOWNSHIP	RANGE
NE CORNER	24	90N	14W
SE CORNER	13	90N	14W
SW CORNER	18	90N	13W
NW CORNER	19	90N	13W