

Doc ID: 009926520001 Type: GEN  
Recorded: 08/25/2020 at 01:26:09 PM  
Fee Amt: \$7.00 Page 1 of 1  
Black Hawk County Iowa  
SANDIE L. SMITH RECORDER  
File **2021-00004052**

Reserved for County Recorder's use.

Kyle J. Helland, 6109 Chancellor Drive, Cedar Falls, Iowa 50613-6916, (319)-266-0161

UNITED STATES PUBLIC LAND SURVEY CORNER CERTIFICATE  
OF

LAND SURVEY MONUMENTS SITUATED IN SECTION NO. 24, TOWNSHIP NO. 90 NORTH, RANGE  
NO. 12 WEST OF THE FIFTH PRINCIPAL MERIDIAN, BLACK HAWK COUNTY, IOWA.  
PREVIOUSLY RECORDED IN N/A

(SHOW REASON FOR PREPARING THIS CERTIFICATE, THE EVIDENCE AND DETAILED PROCEDURES USED IN ESTABLISHING THE  
CORNER POSITIONS AND MONUMENTATION FOUND OR PLACED.)

MONUMENT DESCRIPTION AND REMARKS:

NO USPLSCC ON FILE. SURVEY COMPLETED IN THE NW, NE AND SE 1/4 OF SEC. 24-T90N-R12W.

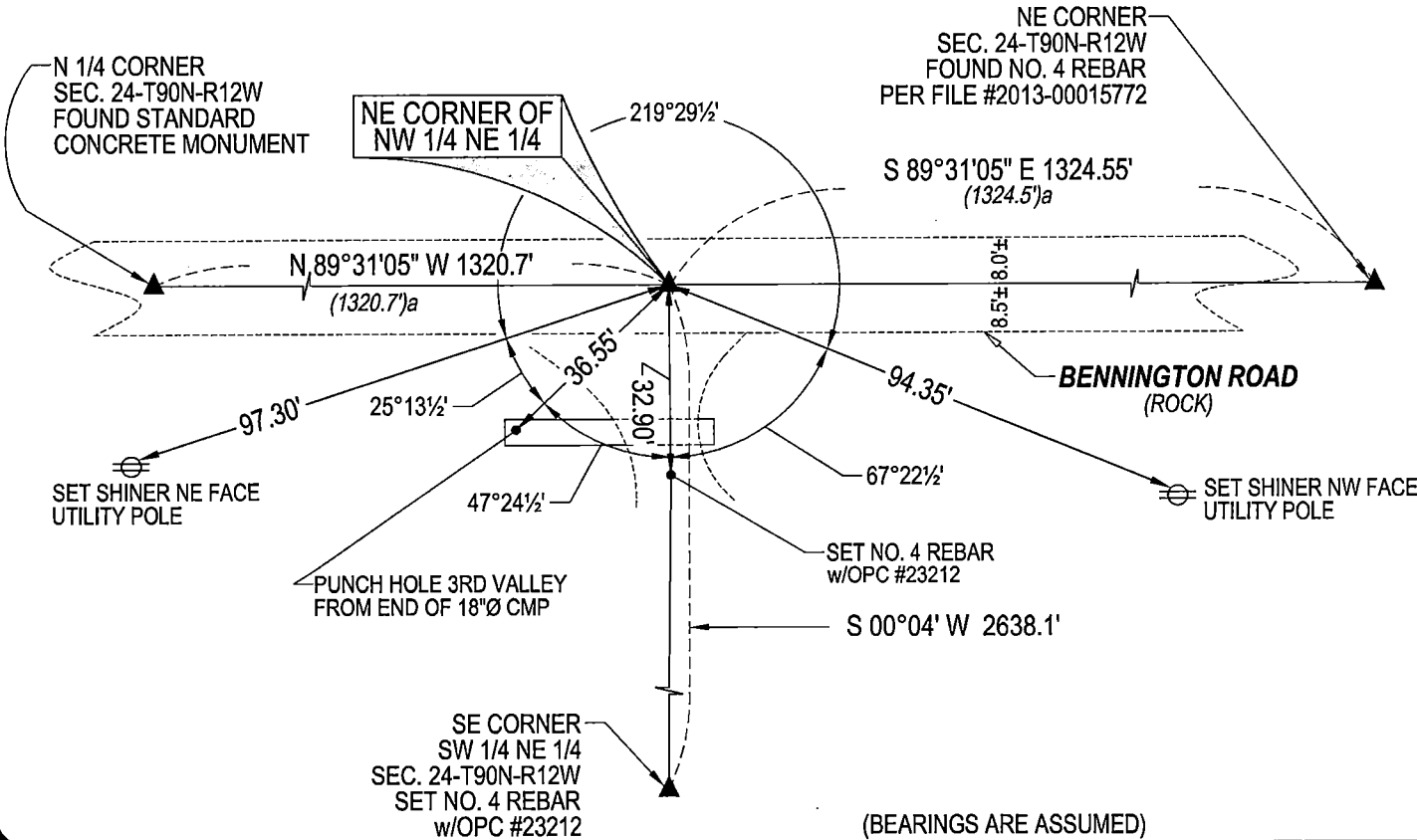
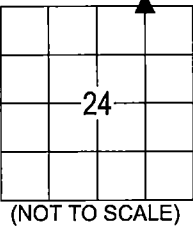
NE CORNER NW 1/4 NE 1/4: NO BLACK HAWK COUNTY ENGINEER TIES ARE AVAILABLE. SEARCHED AREA WITH METAL  
DETECTOR AND PROBED AND FOUND NOTHING, THEREFORE SET NO. 4 REBAR w/OPC #23212 AT LOCATION ON LINE  
BETWEEN N 1/4 CORNER AND NE CORNER AT DISTANCES RECORDED IN WPA NOTES PER 1/4 1/4 FENCELINES WHICH  
EXISTED AT TIME OF WPA NOTES BUT ARE NOW REMOVED.

PLAN VIEW

(SHOW A MINIMUM OF THREE REFERENCE TIES TO DURABLE PHYSICAL OBJECTS, RELEVANT MONUMENTS AND PHYSICAL  
CONDITIONS THAT WILL ENABLE RECOVERY OF THE CORNER.)

LEGEND

(0.0')a WPA NOTES PG 24



**HES** HELLAND ENGINEERING & SURVEYING, LTD.  
6109 Chancellor Drive  
Cedar Falls, Iowa 50613-6916  
(319)-266-0161

BRASS TAG = 4d. NAIL & 13/16"Ø BRASS TAG DRAWN BY: KDA  
SHINER = 1"Ø STEEL SHINER w/MASONRY NAIL  
OPC = PLASTIC CAP (O=ORANGE, R=RED, Y=YELLOW)  
(00') RECORDED AS FILE NAME: 20-167-31.DWG



I hereby certify that this land surveying document was prepared  
and the related survey work was performed by me or under my  
direct personal supervision and that I am a duly licensed  
Professional Land Surveyor under the laws of the State of Iowa.  
*Kyle J. Helland* 08/17/2021  
Kyle J. Helland  
License Number 23212  
My license renewal date is December 31, 2021.  
All pages or sheets are covered by this seal except:

| LIST CORNERS TO BE INDEXED |         |          |       |
|----------------------------|---------|----------|-------|
| CORNER                     | SECTION | TOWNSHIP | RANGE |
| NE COR. NW 1/4 NE 1/4      | 24      | 90N      | 12W   |
| SE COR. SW 1/4 SE 1/4      | 13      | 90N      | 12W   |
| SW COR. SE 1/4 SE 1/4      | 13      | 90N      | 12W   |
| NW COR. NE 1/4 NE 1/4      | 24      | 90N      | 12W   |