

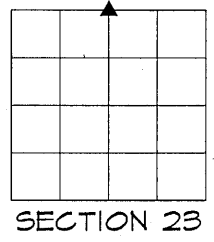
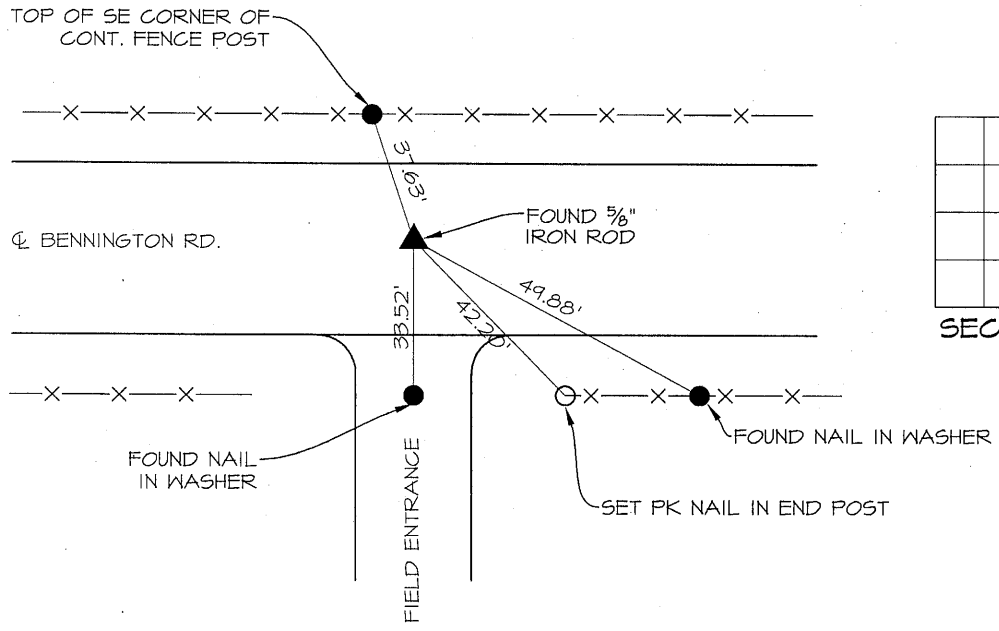
PREPARED BY PATRICK SHEPARD: CIVIL ENGINEERING CONSULTANTS, INC. - 2400 86th ST. #12 -DES MOINES, IOWA 50322

# UNITED STATES PUBLIC LAND SURVEY CORNER CERTIFICATE OF

LAND SURVEY MONUMENTS SITUATED IN SECTION 23, TOWNSHIP 90 NORTH, RANGE 14 WEST, OF THE FIFTH PRINCIPAL MERIDIAN, BLACK HAWK COUNTY, IOWA. PREVIOUS RECORD FOUND AT THE BLACK HAWK COUNTY RECORDER'S OFFICE IN DOC. 2007006811

MONUMENT DESCRIPTION AND REMARKS:  
N 1/4 CORNER, 23-90-14 FOUND 5/8" IRON ROD AND TWO TIES THAT MATCH PREVIOUS RECORD. THIS CERTIFICATE IS BEING PREPARED TO PROVIDE ADDITIONAL TIES.

## PLAN -VIEW

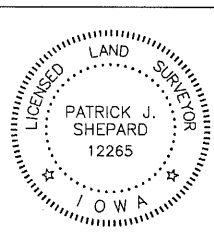


SECTION 23



### LIST CORNERS TO BE INDEXED

CORNERS	SECTION	TWP.	RANGE
N 1/4 CORNER	23	90	14
S 1/4 CORNER	14	90	14



I HEREBY CERTIFY THAT THIS LAND SURVEYING DOCUMENT WAS PREPARED AND THE RELATED SURVEY WORK WAS PERFORMED BY ME OR UNDER MY DIRECT PERSONAL SUPERVISION AND THAT I AM A DULY LICENSED LAND SURVEYOR UNDER THE LAWS OF THE STATE OF IOWA.  
*Patrick J. Shepard* 1-24-13  
PATRICK J. SHEPARD, IOWA LICENSE NO. 12265 DATE  
MY LICENSE RENEWAL DATE IS DECEMBER 31, 2013  
PAGES OR SHEETS COVERED BY THIS SEAL:  
THIS SHEET ONLY