

SC ✓
MISC ✓
INDEX 48
MARGIN
PROOF
COMPARISON

BLACK HAWK COUNTY IOWA: SS
Filed for record Jul 25, 19 97 at
4:00 P.M. and recorded in Book 326
of MISC Page 427
Recorder
ENGINEER'S OFFICE

County Recorder
1707

PREPARED BY: BLACK HAWK COUNTY ENGINEERS OFFICE
316 E. FIFTH STREET, ROOM 211 WATERLOO, IOWA 50703
PH. # (319) 291-2419
FAX. # (319) 291-2461
SLSI 9-94
CERT 12-96

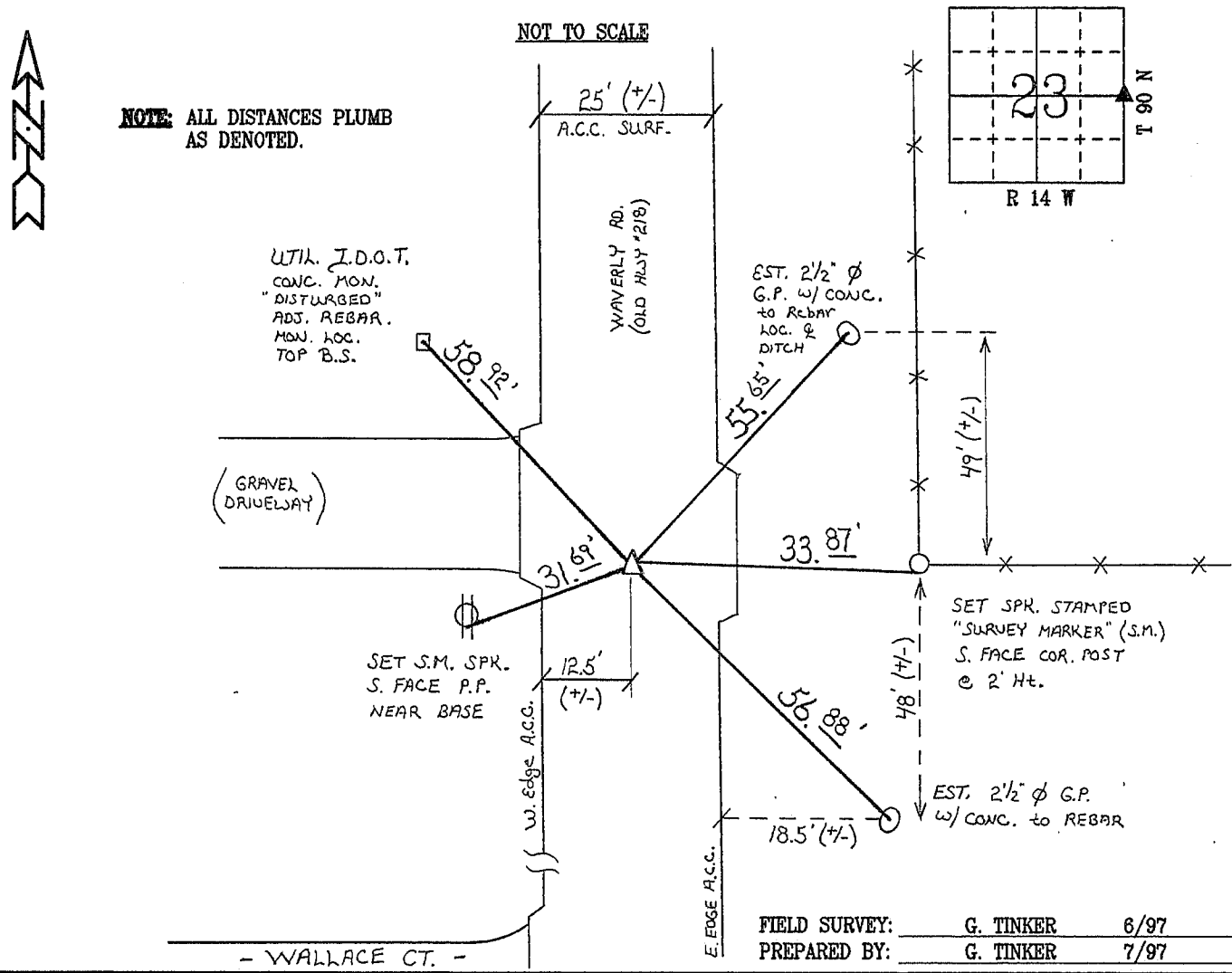
UNITED STATES PUBLIC LAND SURVEY CORNER CERTIFICATE OF
Land Survey Monuments situated in Section 23, Township 90 N,
Range 14 W, of the Fifth Principal Meridian, BLACK HAWK County, Iowa.
Previously recorded in Book N/A, Page N/A, in County Recorder's Office.

(Show reason for preparing this certificate, the evidence and detailed procedures used in establishing the corner positions and monumentation found or placed.)

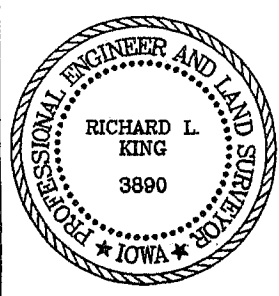
Monument Description and Remarks: RESET 5/8" REBAR FLUSH WITH A.C.C. SURFACE, LOC. CENTERLINE WAVERLY ROAD (OLD HWY. 218), ALIGNED WITH FENCELINE EAST. REFERENCED ONE FOUND I.D.O.T. CONC. MONUMENT (POOR) AND INCLUDED 4 ADDITIONAL REF. TIES AS DENOTED. MON. LOCATED BY SECOND DRIVE TO WEST, NORTH OF WALLACE CT. (WEST). RE-EST, 1996 RESURFACING PROJECT.

PLAN - VIEW

(Show a minimum of three reference ties to durable physical objects, relevant monuments and physical conditions that will enable recovery of the corner.)



CERTIFICATION



I hereby certify that this land surveying document was prepared and the related survey work was performed by me or under my direct personal supervision and that I am a duly licensed Land Surveyor under the laws of the State of Iowa.
Richard L. King 7/25/97 (date)
License Number 3890
My license renewal date is December 31, 1997
Pages or sheets covered by this seal:
This Land Corner Certificate Only.

LIST CORNERS TO BE INDEXED

Corner	Section	Township	Range
E 1/4	23	90 N	14 W