

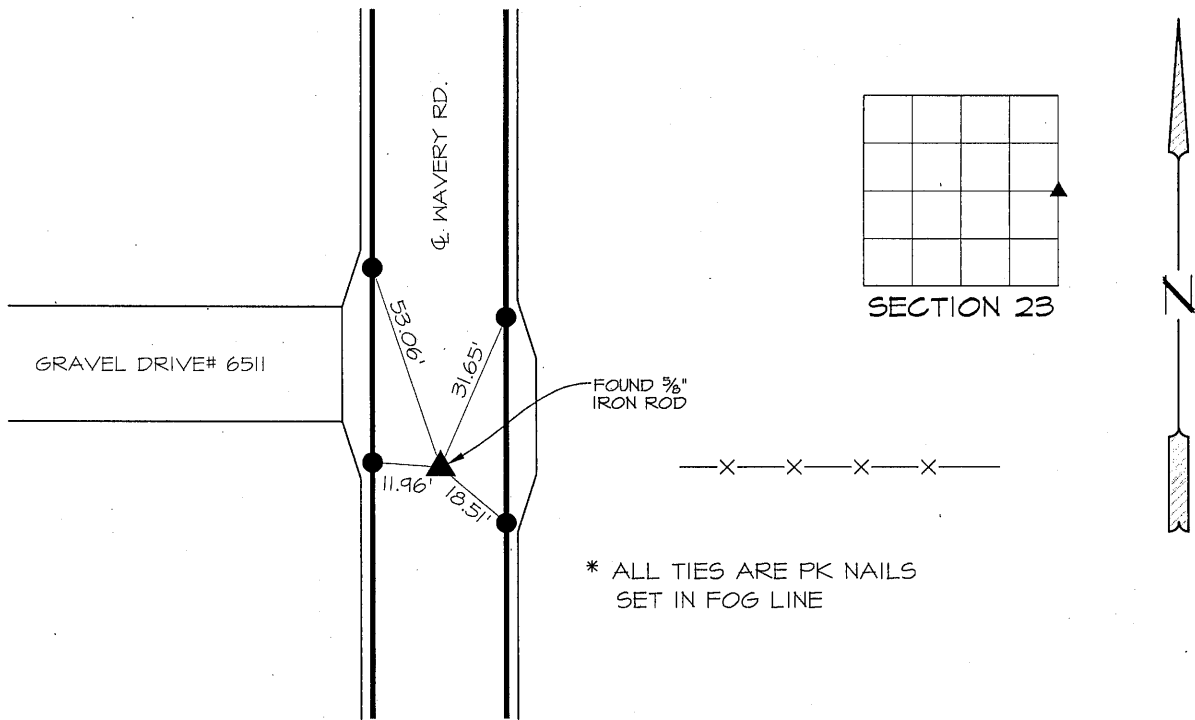
PREPARED BY PATRICK SHEPARD: CIVIL ENGINEERING CONSULTANTS, INC. - 2400 86th ST. #12 -DES MOINES, IOWA 50322

UNITED STATES PUBLIC LAND SURVEY CORNER CERTIFICATE  
OF

LAND SURVEY MONUMENTS SITUATED IN SECTION 23, TOWNSHIP 90 NORTH, RANGE 14 WEST, OF THE FIFTH PRINCIPAL MERIDIAN, BLACK HAWK COUNTY, IOWA. PREVIOUS RECORD FOUND AT THE BLACK HAWK COUNTY RECORDER'S OFFICE IN BOOK 326 MISC. PAGE 427

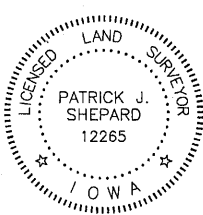
MONUMENT DESCRIPTION AND REMARKS:  
E 1/4 CORNER, 23-90-14 FOUND 5/8" IRON ROD THAT MATCHES PREVIOUS RECORD. NO PREVIOUS TIES FOUND. THIS CERTIFICATE IS BEING PREPARED TO REPLACE LOST TIES.

PLAN -VIEW



LIST CORNERS TO BE INDEXED

CORNERS	SECTION	TWP.	RANGE
E 1/4 CORNER	23	90	14
W 1/4 CORNER	24	90	14



I HEREBY CERTIFY THAT THIS LAND SURVEYING DOCUMENT WAS PREPARED AND THE RELATED SURVEY WORK WAS PERFORMED BY ME OR UNDER MY DIRECT PERSONAL SUPERVISION AND THAT I AM A DULY LICENSED LAND SURVEYOR UNDER THE LAWS OF THE STATE OF IOWA.  
*PShepard 1-24-13*  
PATRICK J. SHEPARD, IOWA LICENSE NO. 12265 DATE  
MY LICENSE RENEWAL DATE IS DECEMBER 31, 2013  
PAGES OR SHEETS COVERED BY THIS SEAL:  
THIS SHEET ONLY