

SC
MISC
INDEX
MARGIN
PROOF
COMPARE

BLACK HAWK COUNTY IOWA:SS 012088
Filed for record NOV 5, 2001 at
4:00 P.M. and recorded in Book 344
of MISC Page 755
Dennis R. Prange Recorder
Fee 1-5.00/
PRANGE SURVEYING
3304 PANTHER LN
CEDAR FALLS IA 50613

PREPARED BY: PRANGE SURVEYING, 3304 PANTHER LANE, CEDAR FALLS, IOWA 50613

SLSI
CERT 9-94
12-98

UNITED STATES PUBLIC LAND SURVEY CORNER CERTIFICATE OF
Land Survey Monuments situated in Section 22, Township 90 North,
Range 14 West, of the Fifth Principal Meridian, Black Hawk County, Iowa.
Previously recorded in Book , Page , in County Recorder's Office.

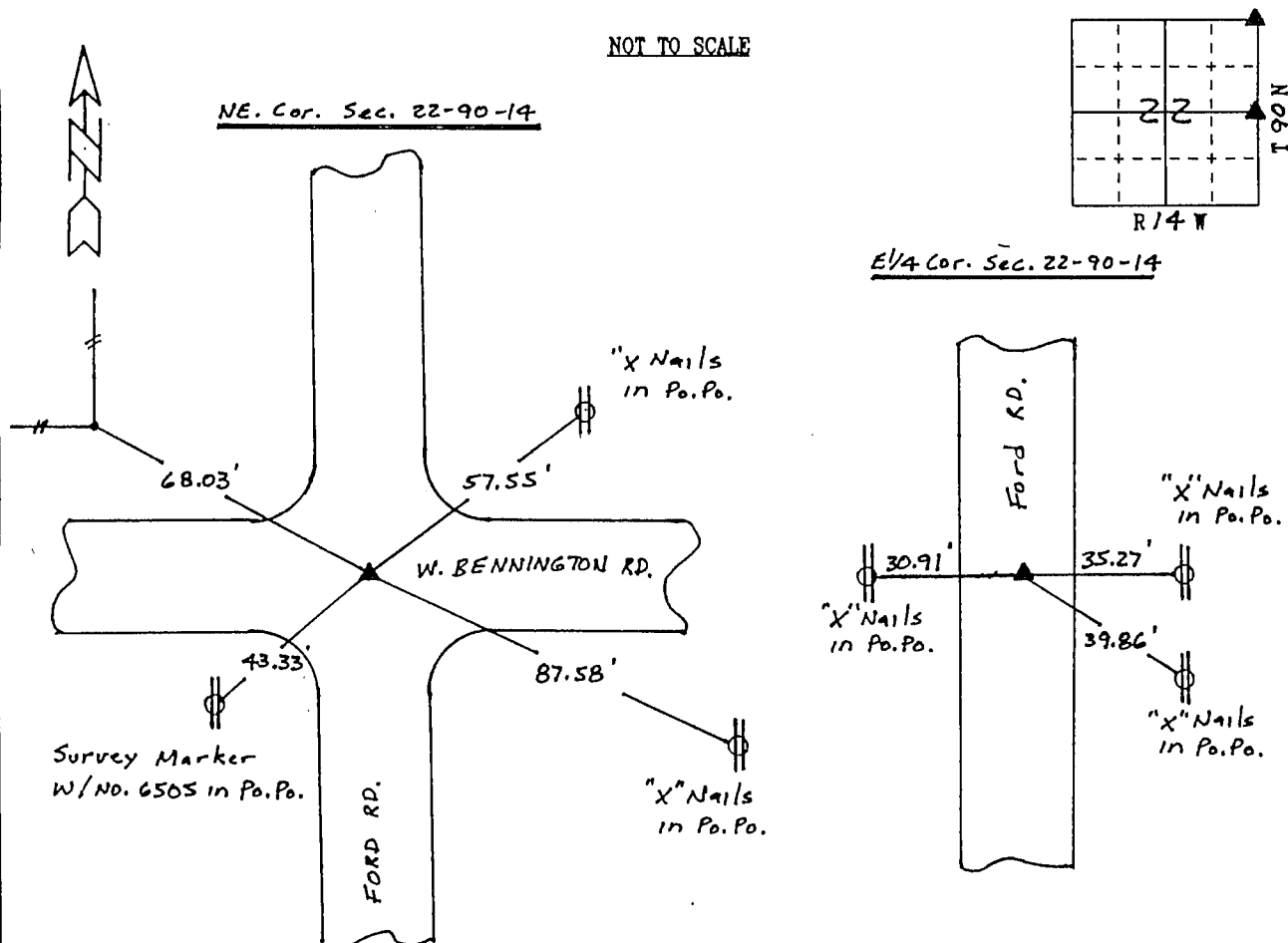
(Show reason for preparing this certificate, the evidence and detailed procedures used in establishing the corner positions and monumentation found or placed.)

Monument Description and Remarks: NE.Cor. - Found Concrete Monument
with brass cap 17" deep with 3/4" Iron pin above. E 1/4 Cor. - Found
Concrete Monument with brass cap 25" deep with 1" Iron pin above.

PLAN - VIEW

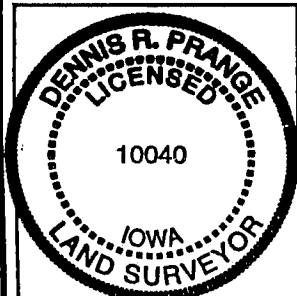
(Show a minimum of three reference ties to durable physical objects, relevant monuments and physical conditions that will enable recovery of the corner.)

NOT TO SCALE



FIELD SURVEY: October 25, 2001
PREPARED BY: Dennis R. Prange

CERTIFICATION



I hereby certify that this land surveying document was prepared and the related survey work was performed by me or under my direct personal supervision and that I am a duly licensed Land Surveyor under the laws of the State of Iowa.

Dennis R. Prange October 29, 2001
(date)

License Number 10040

My license renewal date is December 31, 2002

Pages or sheets covered by this seal:

This Land Corner Certificate Only.

LIST CORNERS TO BE INDEXED

Corner	Section	Township	Range
NE. Cor.	22	90N	14W
E 1/4 Cor.	22	90N	14W