

Reserved for County Recorder's use.

Doc ID: 009773330001 Type: GEN  
Recorded: 03/04/2020 at 03:22:48 PM  
Fee Amt: \$7.00 Page 1 of 1  
Black Hawk County Iowa  
SANDIE L. SMITH RECORDER  
File **2020-00015196**

Kyle J. Helland, 6109 Chancellor Drive, Cedar Falls, Iowa 50613-6916, (319)-266-0161

UNITED STATES PUBLIC LAND SURVEY CORNER CERTIFICATE  
OF

LAND SURVEY MONUMENTS SITUATED IN SECTION NO. 22, TOWNSHIP NO. 90 NORTH, RANGE  
NO. 14 WEST OF THE FIFTH PRINCIPAL MERIDIAN, BLACK HAWK COUNTY, IOWA.  
PREVIOUSLY RECORDED IN 344 MISC. 755

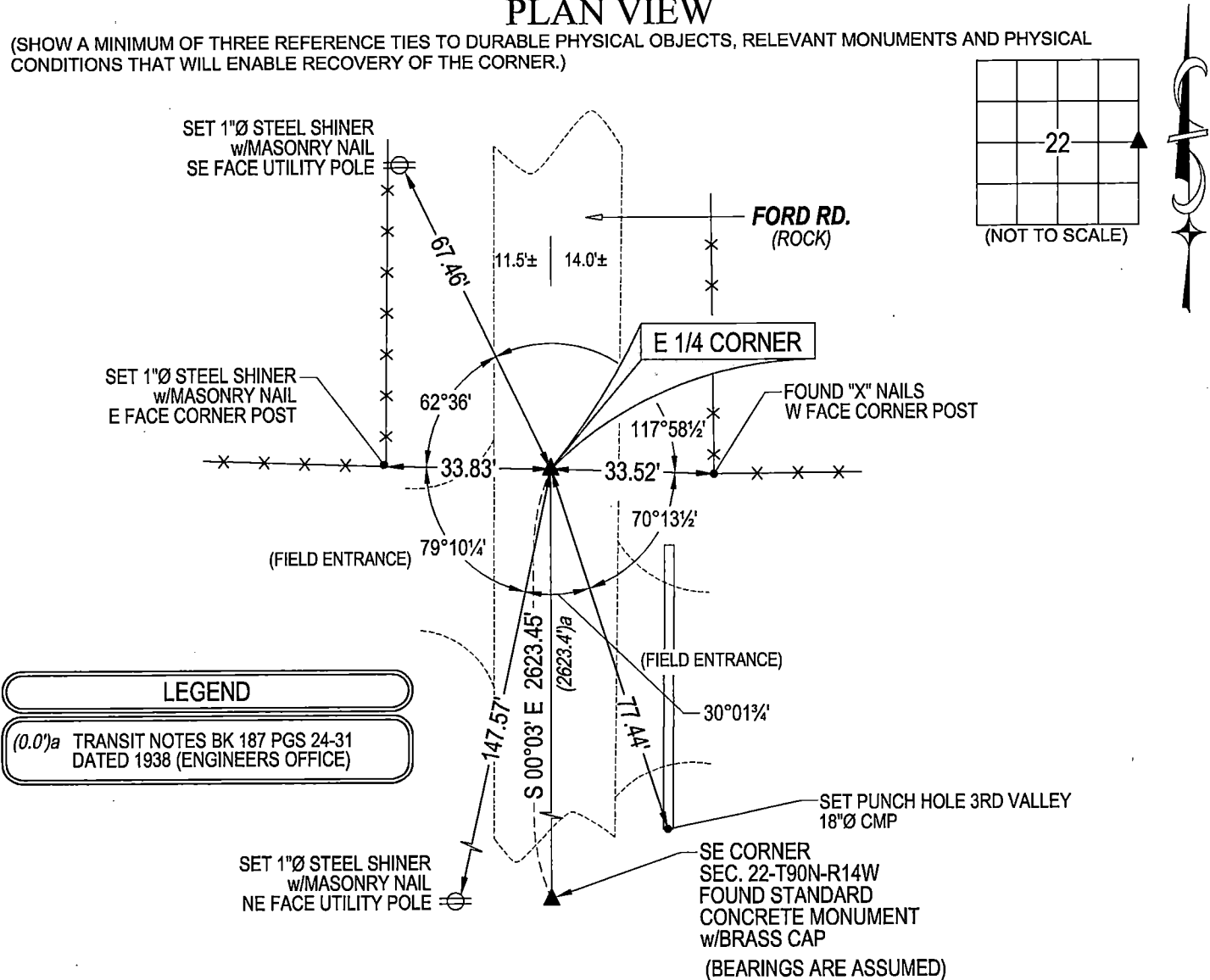
(SHOW REASON FOR PREPARING THIS CERTIFICATE, THE EVIDENCE AND DETAILED PROCEDURES USED IN ESTABLISHING THE  
CORNER POSITIONS AND MONUMENTATION FOUND OR PLACED.)

MONUMENT DESCRIPTION AND REMARKS:  
NO REFERENCE TIES REMAIN. SURVEY COMPLETED IN THE SE 1/4 OF SEC. 22-T90N-R14W.

**E 1/4 CORNER:** WPA NOTES DATED 05/31/1939 CALLS FOR [AT LOCATION INDICATED BY RANDOM LINE DUG HOLE 5FT.  
SQ. 18" DEEP FOUND N\*\*\*\*HEAD 11" x 11" x 8" LOWERED ALL EVIDENCE IN PLACE AND SET C.M. WITH CAP MARKED SET  
TOP OF C.M. 12" DEEP]. BLACK HAWK COUNTY ENGINEER REFERENCE TIES DATED 1958 CALLS FOR [MON. 26" DEEP  
IRON BAR ON TOP]. USPLSCC DATED 10/29/2001 CALLS FOR [FOUND CONCRETE MONUMENT WITH BRASS CAP 25"  
DEEP WITH 1" IRON PIN ABOVE.] SEARCHED AREA WITH MAGNETIC DETECTOR AND FOUND SIX SIDED 1" IRON PIN.

PLAN VIEW

(SHOW A MINIMUM OF THREE REFERENCE TIES TO DURABLE PHYSICAL OBJECTS, RELEVANT MONUMENTS AND PHYSICAL  
CONDITIONS THAT WILL ENABLE RECOVERY OF THE CORNER.)



HELLAND ENGINEERING & SURVEYING, LTD.  
6109 Chancellor Drive  
Cedar Falls, Iowa 50613-6916  
(319)-266-0161

BRASS TAG = 4d. NAIL & 13/16"Ø BRASS TAG DRAWN BY: CDR  
SHINER = 1"Ø STEEL SHINER w/MASONRY NAIL  
OPC = PLASTIC CAP (O=ORANGE, R=RED, Y=YELLOW)  
(00') RECORDED AS FILE NAME: 20-111-22.DWG



I hereby certify that this land surveying document was prepared  
and the related survey work was performed by me or under my  
direct personal supervision and that I am a duly licensed  
Professional Land Surveyor under the laws of the State of Iowa.  
*Kyle J. Helland* 03/02/2020  
Kyle J. Helland  
License Number 23212  
My license renewal date is December 31, 2021.  
All pages or sheets are covered by this seal except:

LIST CORNERS TO BE INDEXED			
CORNER	SECTION	TOWNSHIP	RANGE
E 1/4 CORNER	22	90N	14W
W 1/4 CORNER	23	90N	14W