



Doc ID: 007047750001 Type: GEN  
Recorded: 06/08/2016 at 10:33:49 AM  
Fee Amt: \$7.00 Page 1 of 1  
Black Hawk County Iowa  
SANDIE L. SMITH RECORDER

File 2016-00020980

Jeffrey P. Helland, 1107 Technology Parkway, Cedar Falls, Iowa 50613-6951, (319)-266-0161

UNITED STATES PUBLIC LAND SURVEY CORNER CERTIFICATE  
OF

LAND SURVEY MONUMENTS SITUATED IN SECTION NO. 21, TOWNSHIP NO. 90 NORTH, RANGE NO. 14 WEST OF THE FIFTH PRINCIPAL MERIDIAN, BLACK HAWK COUNTY, IOWA.  
PREVIOUSLY RECORDED IN FILE #2012-00008201

(SHOW REASON FOR PREPARING THIS CERTIFICATE, THE EVIDENCE AND DETAILED PROCEDURES USED IN ESTABLISHING THE CORNER POSITIONS AND MONUMENTATION FOUND OR PLACED.)

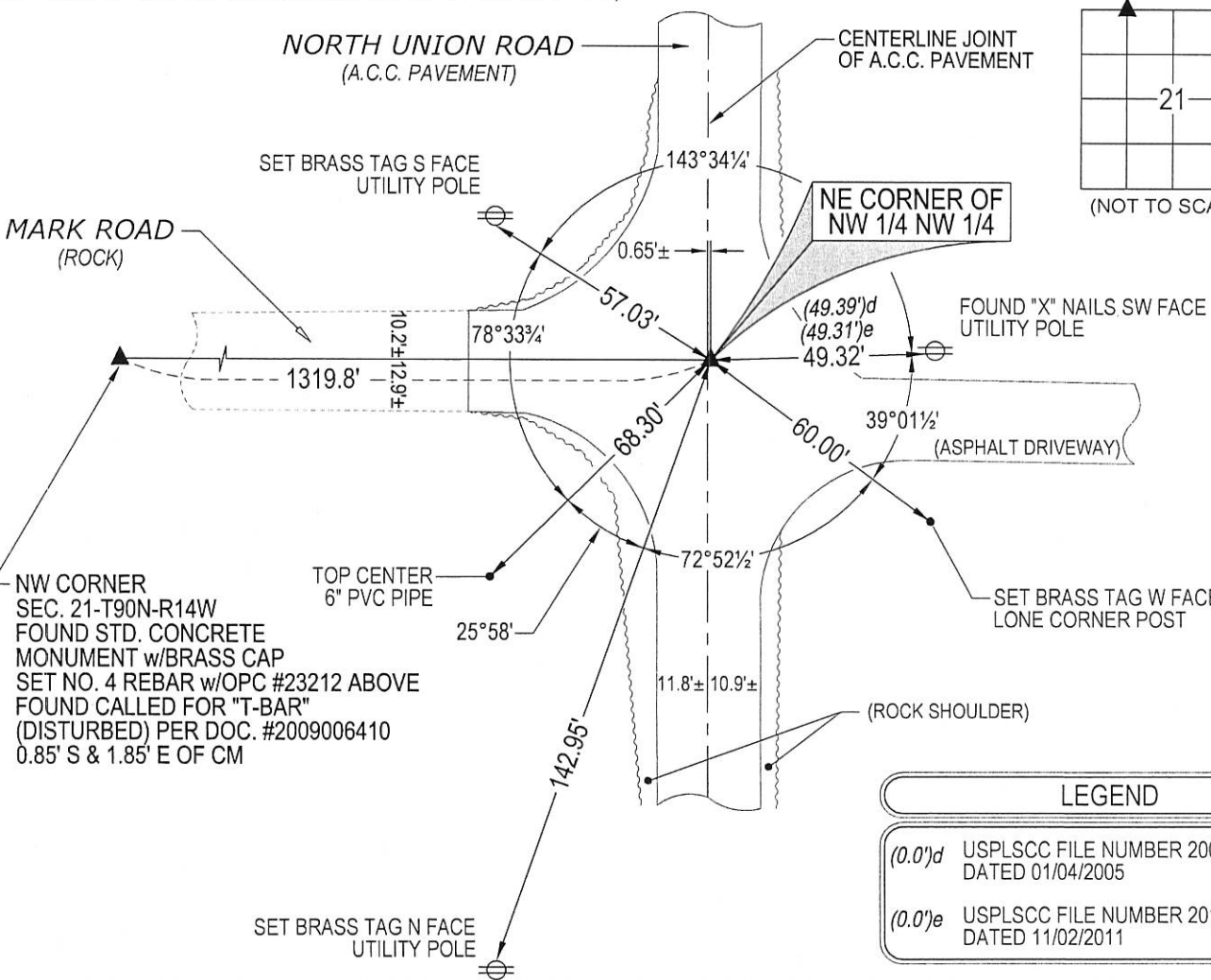
MONUMENT DESCRIPTION AND REMARKS:

ONLY ONE REFERENCE TIE REMAINS. SURVEY COMPLETED IN THE SW 1/4 OF SEC. 16-T90N-R14W & SE 1/4 OF SEC. 17-T90N-14W.

→ NE CORNER NW 1/4 NW 1/4: USPLSCC FILE NUMBER 2005-00016204 CALLS FOR [FOUND 5/8"Ø IRON PIN.]. USPLSCC FILE NUMBER 2012-00008201 CALLS FOR [PRIOR TO H.M.A. RESURFACING PROJ. (#STP-S-C007(106)--5E-07), FOUND 5/8" REBAR PER CURRENT RECORD & TEMP. REF. PER RTK GPS, HISTORICAL COUNTY ENG. TIES (AS NOTED, PREV. STA. 224+17.1) NOT REFERENCED IN CURRENT RECORD. EXISTING A.C.C. MILLED -2", w/SOUNDING (FAINT) REMAINED @ ± RTK REF. LOC, AND NO FURTHER EXCAVATION DONE. RESURFACED WITH +4" H.M.A. (2" INT. & 2" SURF.). AFTER H.M.A. RESURFACING, RESET 5/8"x±7"L. (#5) REBAR LOCATED AT ±0.60' EAST OF CENTERLINE PAVING JOINT AND ALIGNED WITH ± C.L. OF SIDEROAD TO WEST. DEFL. (CORNER) ANGLE DENOTED FOR 16th LINE TO N. & S. PER COGO OF RTK GPS MEAS. CORNERS (AS OBSERVED).] FOUND NO. 5 REBAR IN A.C.C. PAVEMENT PER SAID USPLSCC.

PLAN VIEW

(SHOW A MINIMUM OF THREE REFERENCE TIES TO DURABLE PHYSICAL OBJECTS, RELEVANT MONUMENTS AND PHYSICAL CONDITIONS THAT WILL ENABLE RECOVERY OF THE CORNER.)



LEGEND

- (0.0)d USPLSCC FILE NUMBER 2005-00016204 DATED 01/04/2005
- (0.0)e USPLSCC FILE NUMBER 2012-00008201 DATED 11/02/2011



HELLAND ENGINEERING & SURVEYING, LTD.  
1107 Technology Parkway  
Cedar Falls, Iowa 50613-6951  
(319)-266-0161

SHINER = 8d. NAIL & 1 5/16"Ø METAL SHINER DRAWN BY: VLT  
BRASS TAG = 8d. NAIL & 13/16"Ø BRASS TAG  
OPC = PLASTIC CAP (O=ORANGE, R=RED, Y=YELLOW)  
(00) RECORDED AS FILE NAME: 16-145-53.DWG



I hereby certify that this land surveying document was prepared and the related survey work was performed by me or under my direct personal supervision and that I am a duly licensed Professional Land Surveyor under the laws of the State of Iowa.  
Kyle J. Helland  
License Number 23212  
My license renewal date is December 31, 2017.  
All pages or sheets are covered by this seal except:

LIST CORNERS TO BE INDEXED

CORNER	SECTION	TOWNSHIP	RANGE
NE COR. NW 1/4 NW 1/4	21	90N	14W
SE COR. SW 1/4 SW 1/4	16	90N	14W
SW COR. SE 1/4 SW 1/4	16	90N	14W
NW COR. NE 1/4 NW 1/4	21	90N	14W