



Doc ID: 009899310001 Type: GEN
Recorded: 07/21/2020 at 04:17:57 PM
Fee Amt: \$7.00 Page 1 of 1
Black Hawk County Iowa
SANDIE L. SMITH RECORDER

File 2021-00001656

Reserved for County Recorder's use.

Kyle J. Helland, 6109 Chancellor Drive, Cedar Falls, Iowa 50613-6916, (319)-266-0161

UNITED STATES PUBLIC LAND SURVEY CORNER CERTIFICATE OF

LAND SURVEY MONUMENTS SITUATED IN SECTION NO. 21, TOWNSHIP NO. 90 NORTH, RANGE
NO. 14 WEST OF THE FIFTH PRINCIPAL MERIDIAN, BLACK HAWK COUNTY, IOWA.
PREVIOUSLY RECORDED IN FEE BK # 2005-16203.

(SHOW REASON FOR PREPARING THIS CERTIFICATE, THE EVIDENCE AND DETAILED PROCEDURES USED IN ESTABLISHING THE
CORNER POSITIONS AND MONUMENTATION FOUND OR PLACED.)

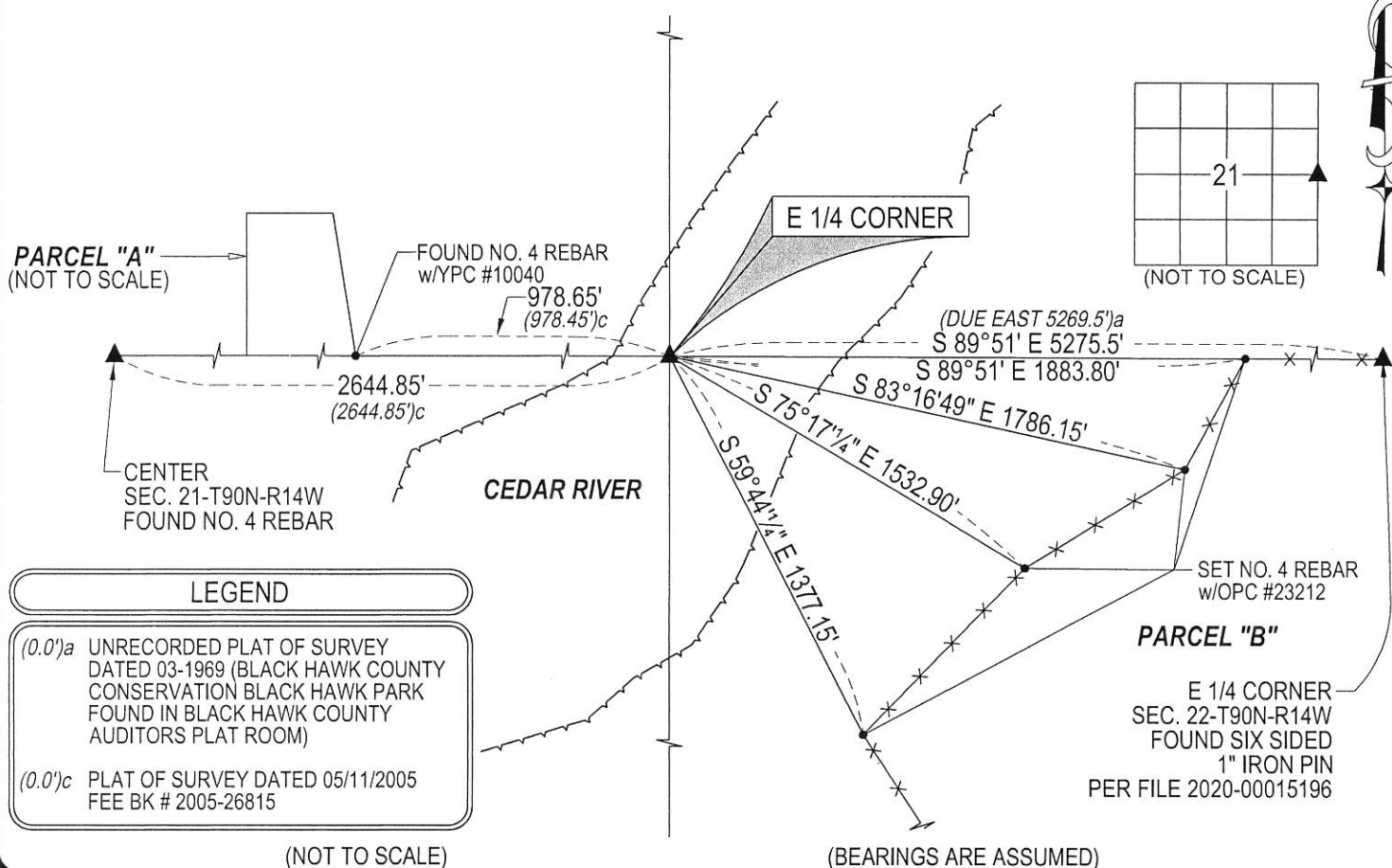
MONUMENT DESCRIPTION AND REMARKS:

THIS CORNER CERTIFICATE IS TO BE CONSIDERED A SUPPLEMENT TO 2005-16203. TIES FOR SAID EXISTING CORNER
CERTIFICATE WERE UNDER WATER AT THE TIME OF THE SURVEY AND COULD NOT BE FOUND AND/OR VERIFIED.
SURVEY COMPLETED IN THE S 1/2 OF SEC. 22-T90N-R14W.

→ **E 1/4 CORNER:** WPA NOTES DATED 05/03/1941 PAGE 8 CALL FOR [FOUND WITNESS CORNER BEARING TREES ON WEST
BANK OF RIVER, A 36" WILLOW A 36" BOX ELDER, NOW FALLEN DOWN, COULD SEE BLAZE MARK ON TRUNK. SWING TIES
FOR OLD WITNESS CORNER. TRUE CORNER IN RIVER 158.5 ft. E. OF WITNESS COR. & 233.5' E. OF NEW WIT. COR. MON.
SET S.C.M. FOR NEW WITNESS CORNER 233.5 ft. WEST OF TRUE CORNER & 75.0 ft. WEST OF WITNESS CORNER & THE
STONE AT CENTER OF SECTION 21.] PLAT OF SURVEY OF PARCEL "A" IN FEE BOOK # 2005-26815, DATED 05/11/2005,
CALLS FOR [WITNESS CORNER FOR EAST 1/4 COR. SEC. 21-90-14 FOUND STD. CONC. MON. 6" DEEP POINT IS 233.5'
WEST OF EAST 1/4 COR.]. CORNER'S POSITION WAS CALCULATED PER PLAT OF SURVEY 2005-26815 OF SAID PARCEL
"A" UTILIZING THE CENTER OF SECTION 21, THE SOUTHEAST CORNER OF PARCEL "A", AND EXTENDING RECORDED
DISTANCES PER SAID PLAT 2005-26815 EASTERLY. **NOTHING FOUND OR SET AS CORNER FALLS IN CEDAR RIVER.**

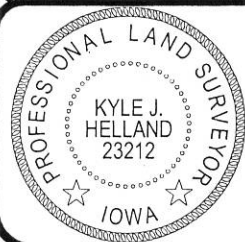
PLAN VIEW

(SHOW A MINIMUM OF THREE REFERENCE TIES TO DURABLE PHYSICAL OBJECTS, RELEVANT MONUMENTS AND PHYSICAL
CONDITIONS THAT WILL ENABLE RECOVERY OF THE CORNER.)



HELLAND ENGINEERING & SURVEYING, LTD.
6109 Chancellor Drive
Cedar Falls, Iowa 50613-6916
(319)-266-0161

BRASS TAG = 4d. NAIL & 13/16"Ø BRASS TAG DRAWN BY: KDA
SHINER = 1"Ø STEEL SHINER w/MASONRY NAIL
OPC = PLASTIC CAP (O=ORANGE, R=RED, Y=YELLOW)
(00') RECORDED AS FILE NAME: 20-162-26.DWG



I hereby certify that this land surveying document was prepared
and the related survey work was performed by me or under my
direct personal supervision and that I am a duly licensed

Kyle J. Helland
License Number 23212
My license renewal date is December 31, 2021.
All pages or sheets are covered by this seal except:

LIST CORNERS TO BE INDEXED

CORNER	SECTION	TOWNSHIP	RANGE
E 1/4 CORNER	21	90N	14W
W 1/4 CORNER	22	90N	14W