

PRANGE SURVEYING

Prepared by Dennis R. Prange, L.S., Prange Surveying, 3304 Panther Lane, Cedar Falls, Iowa 50613, (319) 277-4935

UNITED STATES PUBLIC LAND SURVEY CORNER CERTIFICATE  
OF

Land Survey Monuments situated in Section No. 21, Township No. 90 North, Range No. 14 West, of the Fifth Principal Meridian, Black Hawk County, Iowa.  
Previously recorded in Book N/A on Page N/A in the office of the County Recorder.  
(book, page, document number, etc.)

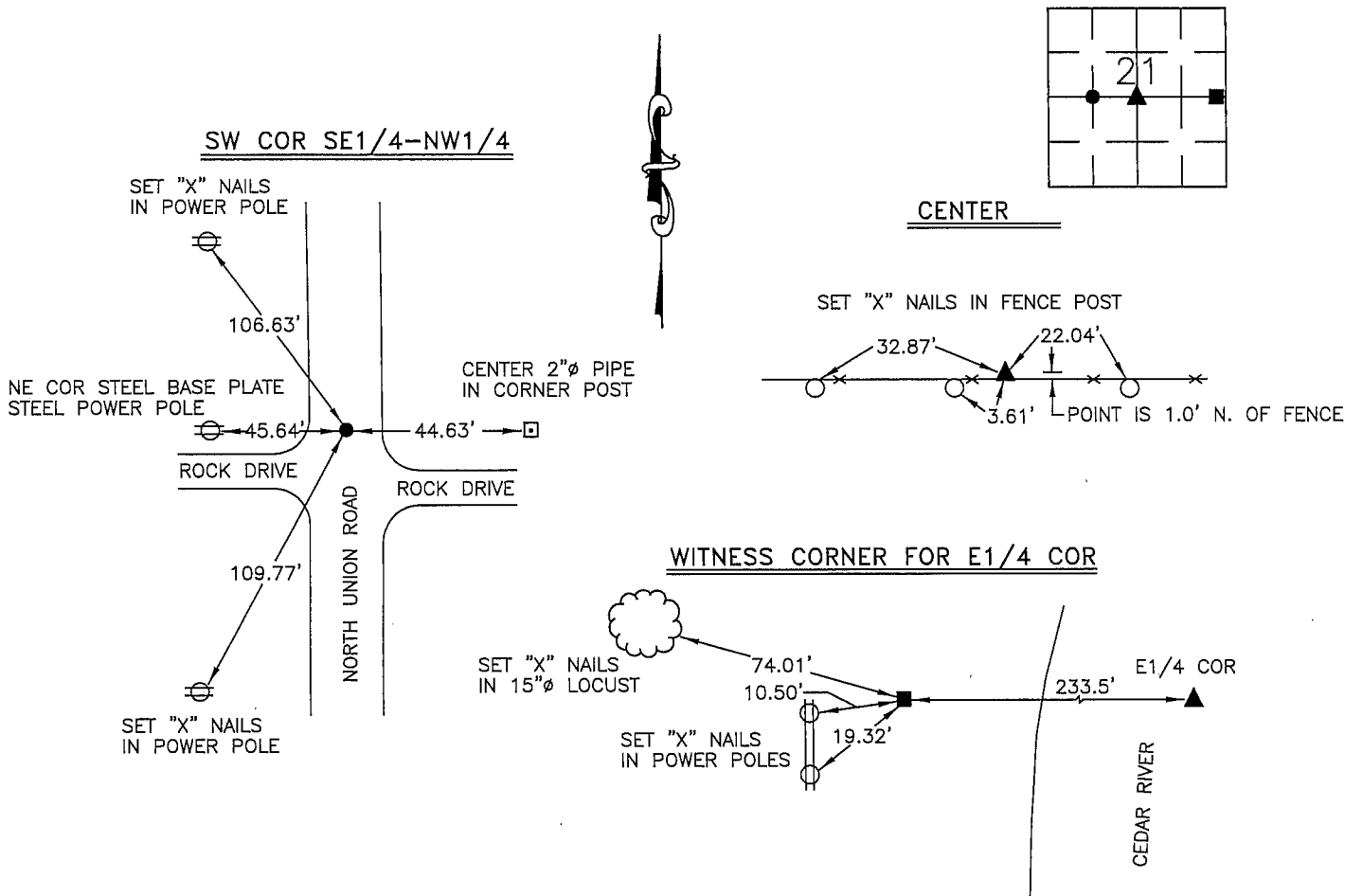
(Show reason for preparing this certificate, the evidence and detailed procedures used in establishing the corner positions and monumentation found or placed.)

Monument Description and Remarks: Southwest Corner SE1/4-NW1/4 Section 21-90-14 - Found 5/8"Ø Iron Pin. Center Section 21-90-14 - Found Limestone 15" deep. Set Iron Pin W/Cap No. 10040 above. Witness Corner for E1/4 Corner - Found Standard Concrete Monument 6" deep with top stamped "WIT COR 233.5".

PLAN - VIEW

(Show a minimum of three reference ties to durable physical objects, relevant monuments and physical conditions that will enable recovery of the corner.)

NOT TO SCALE

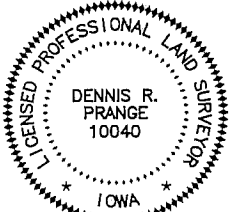


I hereby certify that this land surveying document was prepared by me or under my direct personal supervision and that I am a duly licensed Professional Land Surveyor under the laws of the State of Iowa.

Signed: *Dennis R. Prange*  
Dennis R. Prange, L.S. Iowa License No. 10040

Date: January 4, 2005

SEAL



My License renewal date is December 31, 2006.  
Pages or sheets covered by this seal : this page only

Corners	List Corners to be Indexed Section	Twp	Range
SW COR SE1/4-NW1/4	21	90	14
CENTER	21	90	14
WIT COR E1/4 COR	21	90	14

Drawn by: DRP

Checked by: