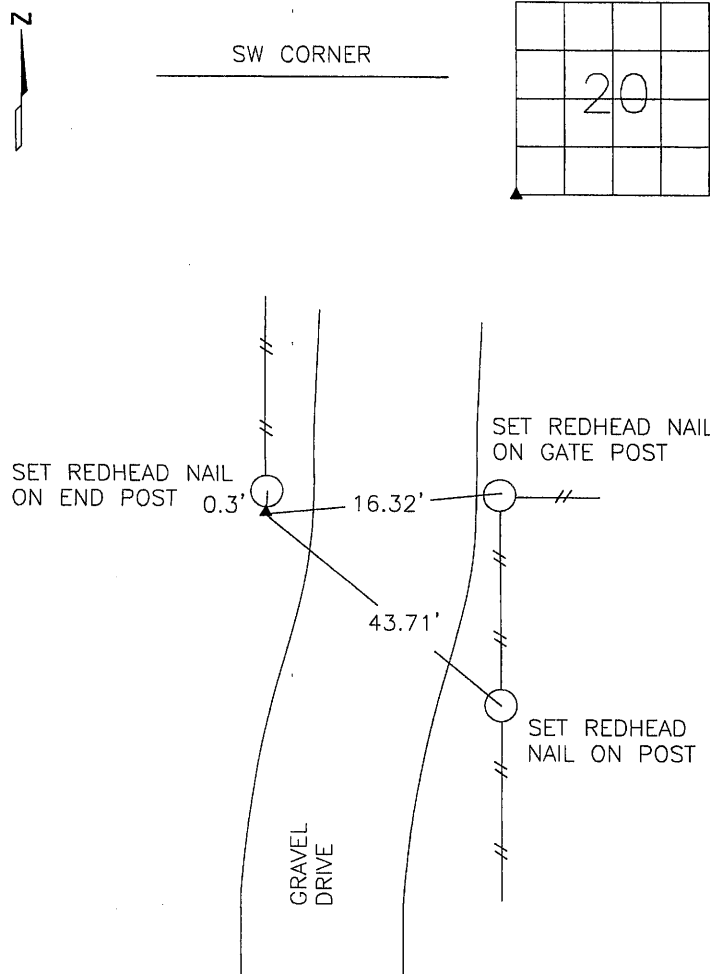


PREPARED BY
STEPHEN MICHAEL BRAIN, BRAIN ENGINEERING, INC., 1540 MIDLAND COURT NE, CEDAR RAPIDS, IOWA PH. (319) 294-9424

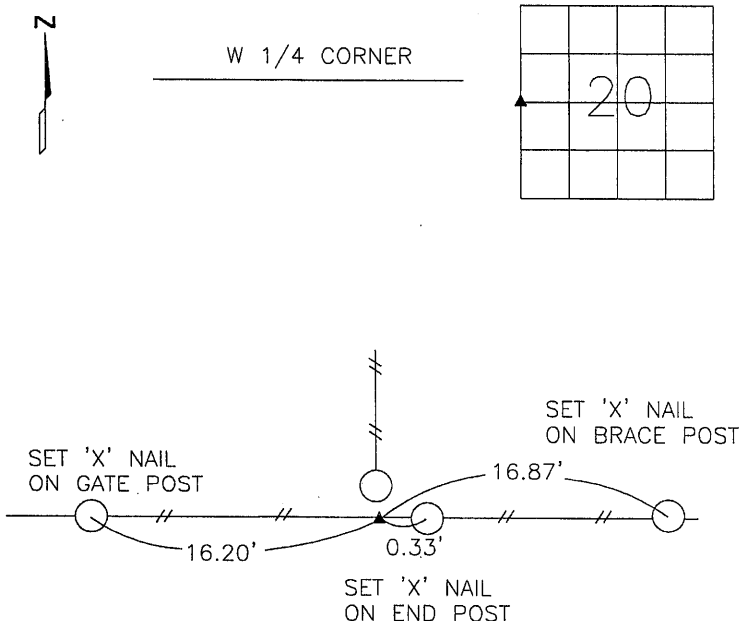
UNITED STATES PUBLIC LAND SURVEY CORNER CERTIFICATE

LAND SURVEY MONUMENTS SITUATED IN SECTION 20, TOWNSHIP 90 NORTH
RANGE 14 WEST OF THE 5TH P.M., BLACK HAWK COUNTY, IOWA.

NO SCALE



NO SCALE

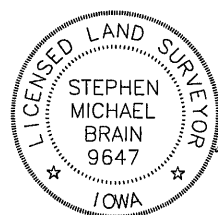


PREVIOUSLY RECORDED IN BOOK _____ PAGE _____

MONUMENT DESCRIPTION AND HOW ESTABLISHED _____
FOUND 4" X 4" CONCRETE MONUMENT WITH BRASS DISK 8"
BELOW THE SURFACE AT THE SOUTH SIDE OF THE END
POST.

PREVIOUSLY RECORDED IN BOOK _____ PAGE _____

MONUMENT DESCRIPTION AND HOW ESTABLISHED _____
FOUND 4" X 4" CONCRETE MONUMENT WITH BRASS DISK 6"
BELOW THE SURFACE ON THE SOUTH SIDE OF THE END
POST FOR THE FENCE TO THE NORTH.



I hereby certify that this land surveying document
and the related survey work was performed by me
or under my direct personal supervision and that
I am a duly licensed Land Surveyor under the laws
of the State of Iowa.
Signed _____ Date 10/29/12

Stephen Michael Brain, L.S.
My License Renewal Date is December 31, 2012
License Number 9647
Pages or sheets covered by this seal: 1/1

- ☒ A.THERE IS NO CERTIFICATE FOR THE CORNER ON FILE
WITH THE RECORDER OF THE COUNTY IN WHICH THE
CORNER IS LOCATED
☐ B.THE SURVEYOR IN RESPONSIBLE CHARGE OF THE LAND
SURVEYING ACCEPTS A CORNER POSITION WHICH DIFFERS
FROM THAT SHOWN IN THE PUBLIC RECORDS OF THE
COUNTY IN WHICH THE CORNER IS LOCATED.
☐ C.THE CORNER MONUMENT IS REPLACED OR MODIFIED IN
ANY WAY.
☐ D.THE REFERENCE TIES REFERRED TO IN AN EXISTING
PUBLIC RECORD ARE NOT CORRECT.

BRAIN ENGINEERING, INC.

1540 MIDLAND COURT NE
CEDAR RAPIDS, IOWA 52402 406212-10
(319) 294-9424