

Jeffrey P. Helland, 1107 Technology Parkway, Cedar Falls, Iowa 50613-6951, (319)-266-0161

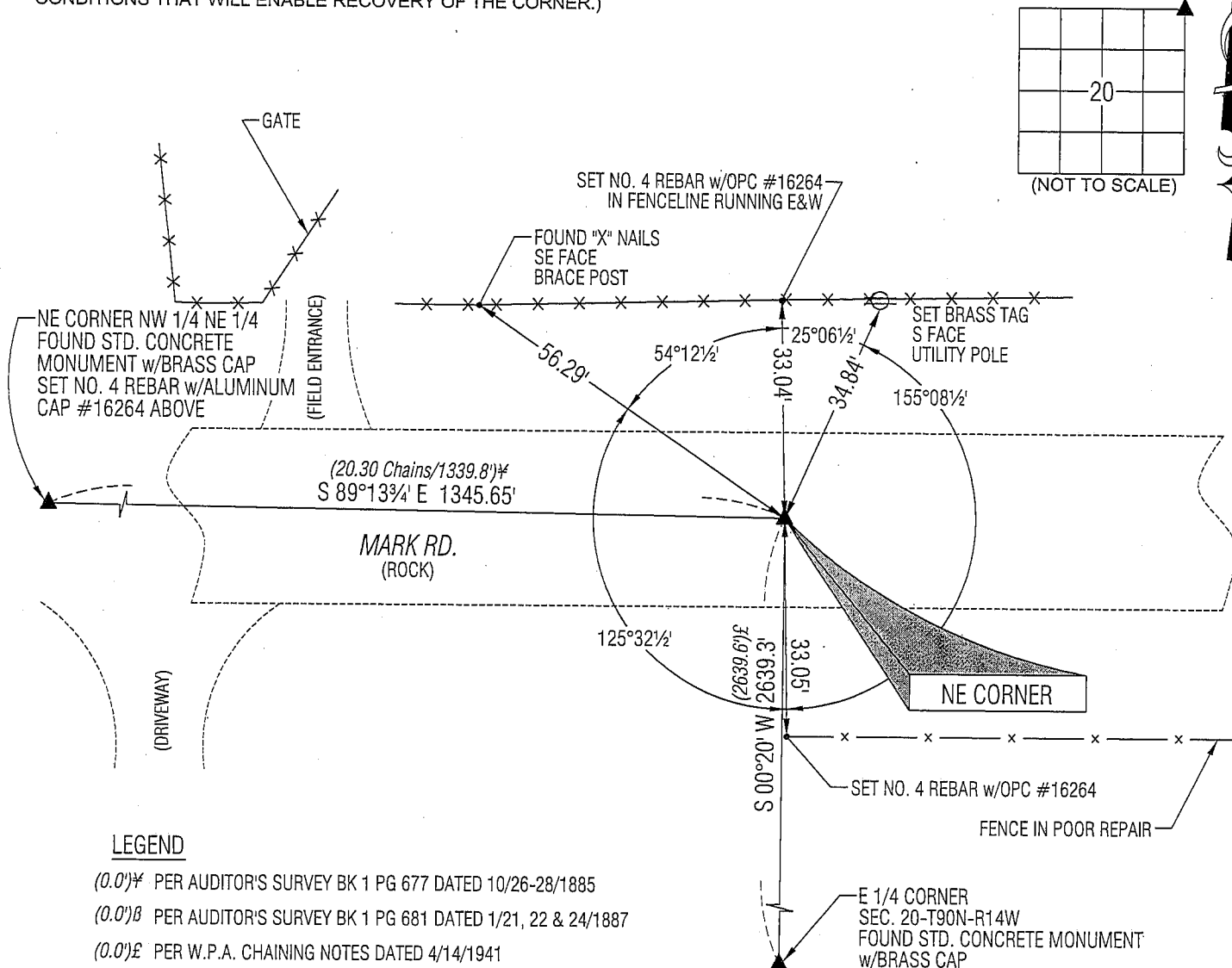
UNITED STATES PUBLIC LAND SURVEY CORNER CERTIFICATE
OFLAND SURVEY MONUMENTS SITUATED IN SECTION NO. 20, TOWNSHIP NO. 90 NORTH, RANGE
NO. 14 WEST OF THE FIFTH PRINCIPAL MERIDIAN, BLACK HAWK COUNTY, IOWA.
PREVIOUSLY RECORDED IN N/A(SHOW REASON FOR PREPARING THIS CERTIFICATE, THE EVIDENCE AND DETAILED PROCEDURES USED IN ESTABLISHING THE
CORNER POSITIONS AND MONUMENTATION FOUND OR PLACED.)

MONUMENT DESCRIPTION AND REMARKS:

NO USPLSCC ON FILE. SURVEY COMPLETED IN THE NE 1/4 OF SEC. 20-T90N-R14W.

→ **NE CORNER:** AUDITOR'S SURVEY BK 1 PG 677 DATED 10/26-28/1885 CALLS FOR [STONE & STAKE]. AUDITOR'S PLAT
SURVEY RECORD BK 1 PG 681 DATED 1/21, 22 & 24/1887 CALLS FOR [STONE & STAKE]. W.P.A. FIELD NOTED DATED
5/31/1939 CALLS FOR [AT LOCATION INDICATED BY RANDOM LINE DUG HOLE 5 FT SQ. 18" DEEP. FOUND - TWO LIMESTONES
18"x8 1/2"x8 1/2" AND ONE 10 1/2"x9 1/2"x9" ALSO OAK HUB 20"x2"x2". LOWERED ALL EVIDENCE AND SET C.M. WITH CAP. SET TOP
OF C.M. 12" DEEP.]. W.P.A. CHAINING NOTES DATED 4/19/1941 CALLS FOR [C.M. SET]. BLACK HAWK COUNTY ENGINEER
REFERENCE TIES DATED 1979 CALLS FOR [CONC. MON. 1' 8" DEEP T-BAR & CAP OVER MON.]. FOUND T-BAR 0.3'± DEEP.
UTILIZED SAID T-BAR AS CORNER.

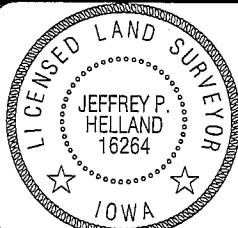
PLAN VIEW

(SHOW A MINIMUM OF THREE REFERENCE TIES TO DURABLE PHYSICAL OBJECTS, RELEVANT MONUMENTS AND PHYSICAL
CONDITIONS THAT WILL ENABLE RECOVERY OF THE CORNER.)

(BEARINGS ARE ASSUMED)



HELLAND ENGINEERING & SURVEYING, LTD.

1107 Technology Parkway
Cedar Falls, Iowa 50613-6951
(319)-266-0161SHINER = 8D NAIL & 1 5/16"Ø METAL SHINER
BRASS TAG = 13/16"Ø BRASS TAG
OPC = PLASTIC CAP (O=ORANGE, R=RED, Y=YELLOW)
(00') RECORDED AS FILE NAME: 08-264C6.DWGI hereby certify that this land surveying document was prepared
and the related survey work was performed by me or under my
direct personal supervision and that I am a duly licensed Land
Surveyor under the laws of the State of Iowa.Jeffrey P. Helland 9/8/08
Jeffrey P. Helland
License Number 16264
My license renewal date is December 31, 2009.
All pages or sheets are covered by this seal except:

LIST CORNERS TO BE INDEXED

CORNER	SECTION	TOWNSHIP	RANGE
NE CORNER	20	90N	14W
SE CORNER	17	90N	14W
SW CORNER	16	90N	14W
NW CORNER	21	90N	14W