

HELLAND ENGINEERING

Document Number: 2009006415

Date: Sep 23, 2008 4:30:00 pm

Aud Fee:	0.00	Rec Fee:	5.00
----------	------	----------	------

Trans Tax:	0.00	Rec Management Fee:	1.00
------------	------	---------------------	------

E-Com Fee:	1.00	Non-Standard Page Fee:	0.00
------------	------	------------------------	------

Filed for record in Black Hawk County, Iowa  
Judith A. McCarthy, County Recorder

Jeffrey P. Helland, 1107 Technology Parkway, Cedar Falls, Iowa 50613-6951, (319)-266-0161

# UNITED STATES PUBLIC LAND SURVEY CORNER CERTIFICATE OF

LAND SURVEY MONUMENTS SITUATED IN SECTION NO. 20, TOWNSHIP NO. 90 NORTH, RANGE NO. 14 WEST OF THE FIFTH PRINCIPAL MERIDIAN, BLACK HAWK COUNTY, IOWA.

PREVIOUSLY RECORDED IN \_\_\_\_\_ N/A

(SHOW REASON FOR PREPARING THIS CERTIFICATE, THE EVIDENCE AND DETAILED PROCEDURES USED IN ESTABLISHING THE CORNER POSITIONS AND MONUMENTATION FOUND OR PLACED.)

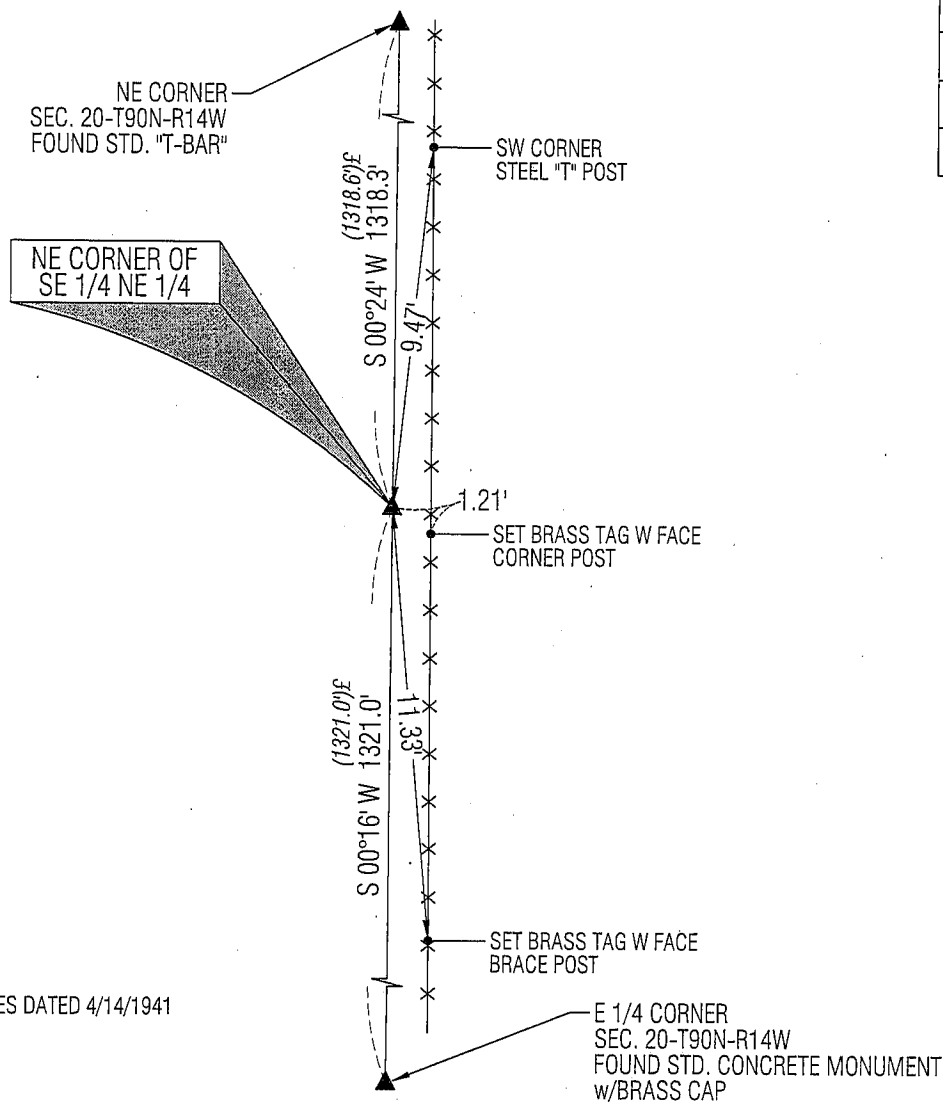
MONUMENT DESCRIPTION AND REMARKS:

NO USPLSCC ON FILE. SURVEY COMPLETED IN THE NE 1/4 SEC. 20-T90N-R14W.

→ **NE CORNER OF SE 1/4 NE 1/4:** W.P.A. NOTES DATED 4/14/1941 CALLS FOR [LARGE NIGGERHEAD 6.4' E.R.L.]. FOUND LARGE GREY GRANITE STONE 20"Ø 1'± BELOW THE SURFACE. PLACED NO. 4 REBAR 0.7" LONG w/ALUMINUM CAP #16264 ON CENTER TOP OF STONE. UTILIZED SAID REBAR AS CORNER.

### PLAN VIEW

(SHOW A MINIMUM OF THREE REFERENCE TIES TO DURABLE PHYSICAL OBJECTS, RELEVANT MONUMENTS AND PHYSICAL CONDITIONS THAT WILL ENABLE RECOVERY OF THE CORNER.)



(NOT TO SCALE)

### LEGEND

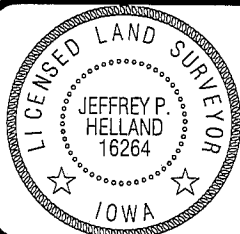
(0.0')£ PER W.P.A. NOTES DATED 4/14/1941

(BEARINGS ARE ASSUMED)



**HELLAND ENGINEERING & SURVEYING, LTD.**  
1107 Technology Parkway  
Cedar Falls, Iowa 50613-6951  
(319)-266-0161

SHINER = 8D NAIL & 1 5/16"Ø METAL SHINER  
BRASS TAG = 13/16"Ø BRASS TAG  
OPC = PLASTIC CAP (O=ORANGE, R=RED, Y=YELLOW)  
(00) RECORDED AS FILE NAME: 08-264C1.DWG



I hereby certify that this land surveying document was prepared and the related survey work was performed by me or under my direct personal supervision and that I am a duly licensed Land Surveyor under the laws of the State of Iowa.

Jeffrey P. Hellard 9/8/08  
 Jeffrey P. Hellard  
 License Number 16264  
 My license renewal date is December 31, 2009.  
 All pages or sheets are covered by this seal except:

## LIST CORNERS TO BE INDEXED

CORNER	SECTION	TOWNSHIP	RANGE
NE COR. SE ¼ NE ¼	20	90N	14W
SE COR. NE ¼ NE ¼	20	90N	14W
SW COR. NW ¼ NW ¼	21	90N	14W
NW COR. SW ¼ NW ¼	21	90N	14W