

I  
R  
Z

Document Number: 2009006408  
Date: Sep 23, 2008 4:30:00 pm  
Aud Fee: 0.00 Rec Fee: 5.00  
Trans Tax: 0.00 Rec Management Fee: 1.00  
E-Com Fee: 1.00 Non-Standard Page Fee: 0.00  
Filed for record in Black Hawk County, Iowa  
Judith A. McCarthy, County Recorder

Jeffrey P. Helland, 1107 Technology Parkway, Cedar Falls, Iowa 50613-6951, (319)-266-0161

UNITED STATES PUBLIC LAND SURVEY CORNER CERTIFICATE  
OF

LAND SURVEY MONUMENTS SITUATED IN SECTION NO. 20, TOWNSHIP NO. 90 NORTH, RANGE NO. 14 WEST OF THE FIFTH PRINCIPAL MERIDIAN, BLACK HAWK COUNTY, IOWA.  
PREVIOUSLY RECORDED IN N/A

(SHOW REASON FOR PREPARING THIS CERTIFICATE, THE EVIDENCE AND DETAILED PROCEDURES USED IN ESTABLISHING THE CORNER POSITIONS AND MONUMENTATION FOUND OR PLACED.)

MONUMENT DESCRIPTION AND REMARKS:

NO USPLSCC ON FILE. SURVEY COMPLETED IN PART OF THE NE 1/4 SE 1/4 OF SEC. 17-T90N-R14W.

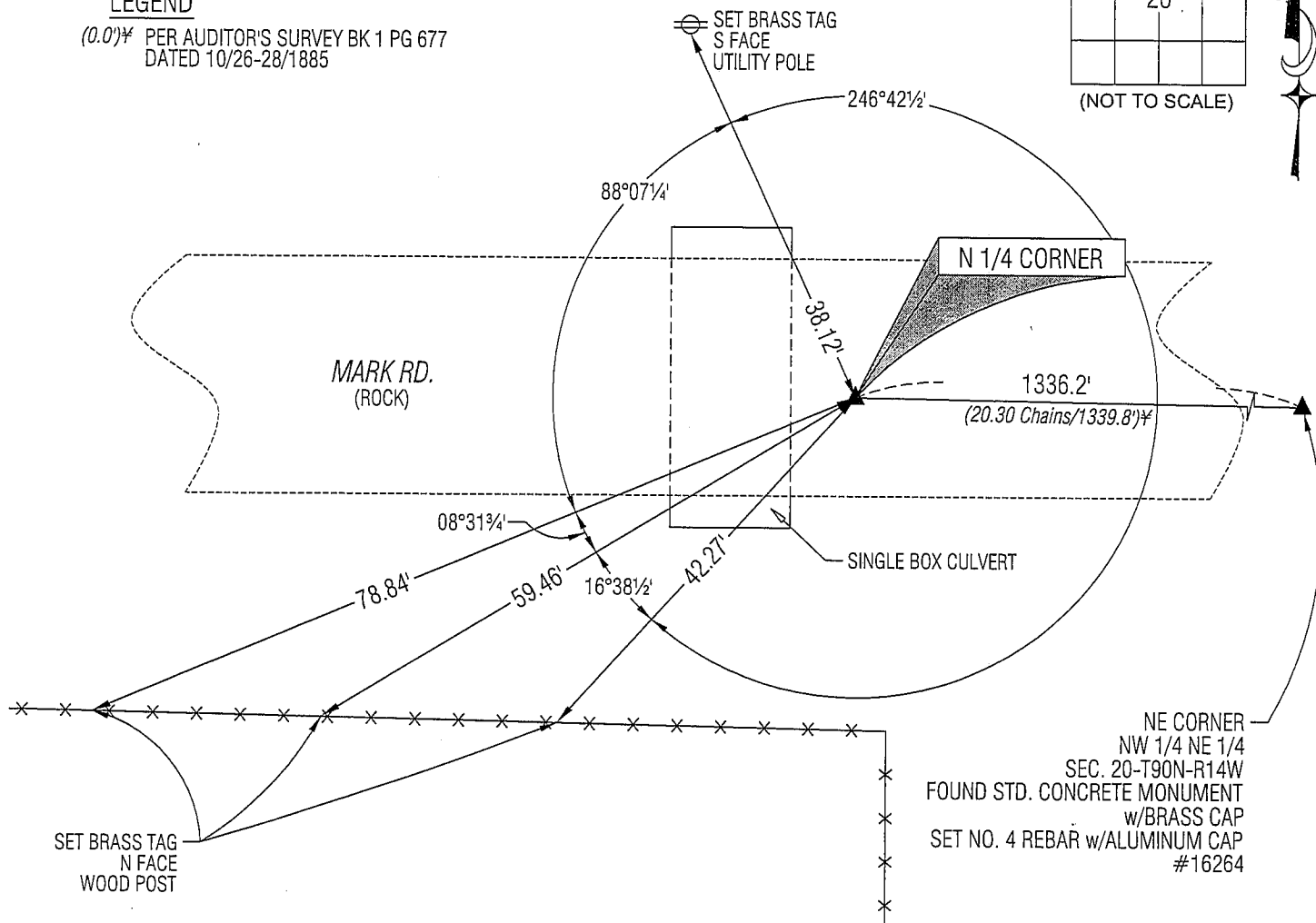
→ **N 1/4 CORNER:** AUDITOR'S SURVEY BK 1 PG 677 DATED 10/26-28/1885 CALLS FOR [STONE & STAKE]. W.P.A. NOTES DATED 5/29/1939 CALLS FOR [AT LOCATION INDICATED BY RANDOM LINE DUG HOLE 5FT. SQ. 18" DEEP. FOUND: OLD OAK HUB VERY ROTTEN. LOWERED ALL EVIDENCE IN PLACE AND SET C.M. WITH CAP MARKED....NOW 4' DEEP, SET TOP OF C.M. 12" DEEP]. PLAT OF SURVEY 257 PG 776 DATED 8/6/1984 CALLS FOR [FO. CONC. MON.]. FOUND STD. CONCRETE MONUMENT W/BRASS CAP. SET NO. 4 REBAR W/ALUMINUM CAP #16264 ABOVE SAID C.M. UTILIZED AS CORNER.

PLAN VIEW

(SHOW A MINIMUM OF THREE REFERENCE TIES TO DURABLE PHYSICAL OBJECTS, RELEVANT MONUMENTS AND PHYSICAL CONDITIONS THAT WILL ENABLE RECOVERY OF THE CORNER.)

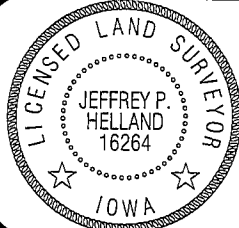
LEGEND

(0.0')<sup>±</sup> PER AUDITOR'S SURVEY BK 1 PG 677  
DATED 10/26-28/1885



HELLAND ENGINEERING & SURVEYING, LTD.  
1107 Technology Parkway  
Cedar Falls, Iowa 50613-6951  
(319)-266-0161

SHINER = 8D NAIL & 1 5/16"Ø METAL SHINER  
BRASS TAG = 13/16"Ø BRASS TAG  
OPC = PLASTIC CAP (O=ORANGE, R=RED, Y=YELLOW)  
(00') RECORDED AS FILE NAME: 08-264C8.DWG



I hereby certify that this land surveying document was prepared and the related survey work was performed by me or under my direct personal supervision and that I am a duly licensed Land Surveyor under the laws of the State of Iowa.

Jeffrey P. Helland 9/2/08  
Jeffrey P. Helland  
License Number 16264  
My license renewal date is December 31, 2009.  
All pages or sheets are covered by this seal except:

LIST CORNERS TO BE INDEXED

CORNER	SECTION	TOWNSHIP	RANGE
N 1/4 CORNER	20	90N	14W
S 1/4 CORNER	17	90N	14W