

IRS
P
Z

Document Number: 2009006414
Date: Sep 23, 2008 4:30:00 pm
Aud Fee: 0.00 Rec Fee: 5.00
Trans Tax: 0.00 Rec Management Fee: 1.00
E-Com Fee: 1.00 Non-Standard Page Fee: 0.00
Filed for record in Black Hawk County, Iowa
Judith A. McCarthy, County Recorder

Jeffrey P. Helland, 1107 Technology Parkway, Cedar Falls, Iowa 50613-6951, (319)-266-0161

UNITED STATES PUBLIC LAND SURVEY CORNER CERTIFICATE
OF

LAND SURVEY MONUMENTS SITUATED IN SECTION NO. 20, TOWNSHIP NO. 90 NORTH, RANGE NO. 14 WEST OF THE FIFTH PRINCIPAL MERIDIAN, BLACK HAWK COUNTY, IOWA.
PREVIOUSLY RECORDED IN N/A

(SHOW REASON FOR PREPARING THIS CERTIFICATE, THE EVIDENCE AND DETAILED PROCEDURES USED IN ESTABLISHING THE CORNER POSITIONS AND MONUMENTATION FOUND OR PLACED.)

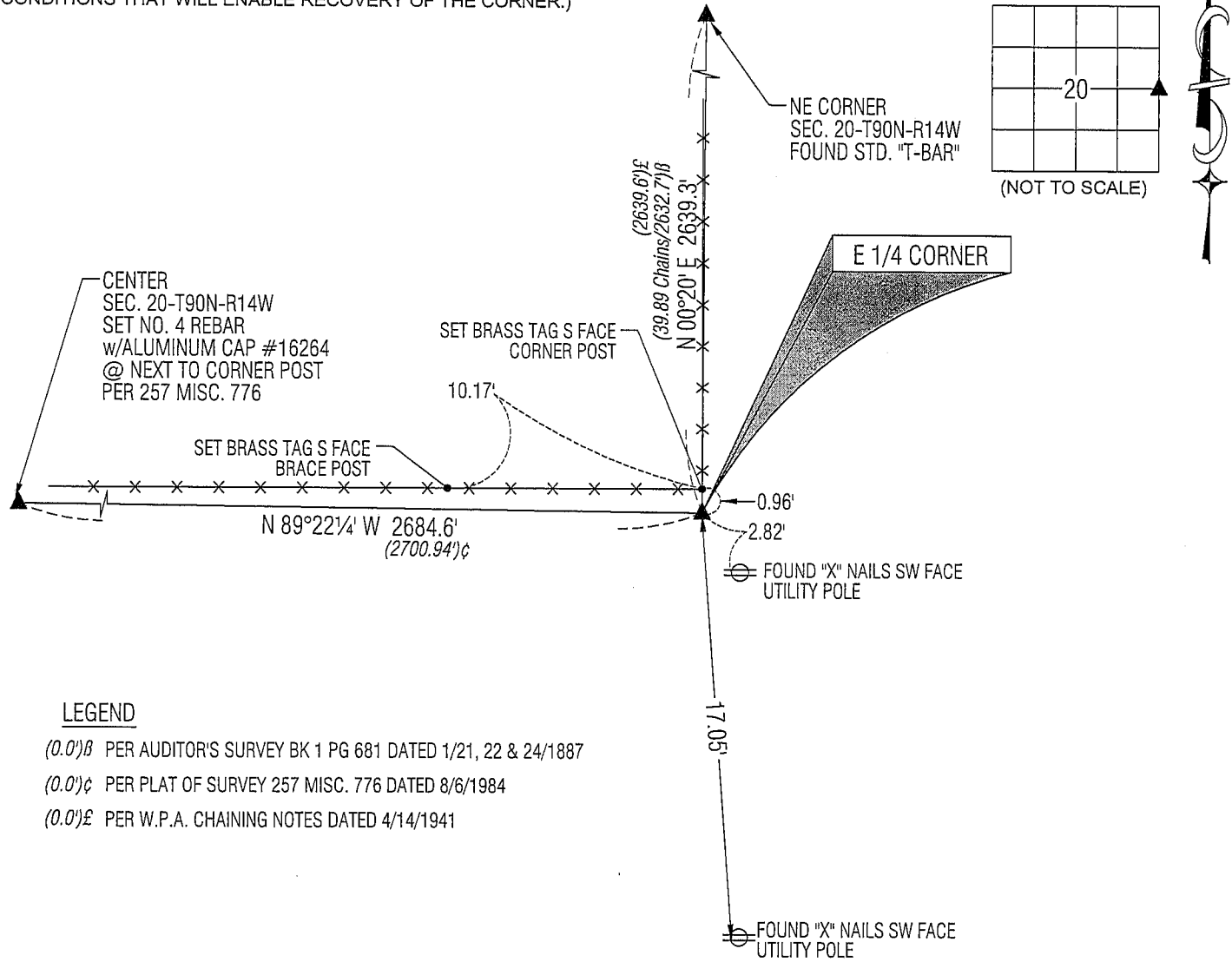
MONUMENT DESCRIPTION AND REMARKS:

NO USPLSCC ON FILE. SURVEY COMPLETED IN THE NE 1/4 OF SEC. 20-T90N-R14W.

E 1/4 CORNER: AUDITOR'S SURVEY BK 1 PG 681 DATED 1/21, 22 & 24/1887 CALLS FOR [STONE]. W.P.A. NOTES DATED 4/14/1941 CALLS FOR [FOUND LIMESTONE PT. UP 2.2' S. OF LARGE STUMP COR. POST & 1.3' W OF FC. R. N. & S. 15.2' E OF R.L.]. W.P.A. TIES DATED 5/2/1941 CALLS FOR [FOUND LIME STONE 12"x8"x4" 2.1' S. OF COTTON WOOD STUMP]. PLAT OF SURVEY IN BK 257 PG 776 DATED 9/6/1984 CALLS FOR [FO. CONC. MON.]. FOUND STANDARD CONCRETE MONUMENT W/BRASS CAP 0.8' DEEP. UTILIZED AS CORNER.

PLAN VIEW

(SHOW A MINIMUM OF THREE REFERENCE TIES TO DURABLE PHYSICAL OBJECTS, RELEVANT MONUMENTS AND PHYSICAL CONDITIONS THAT WILL ENABLE RECOVERY OF THE CORNER.)



LEGEND

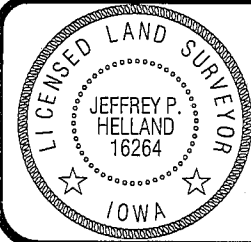
- (0.0')B PER AUDITOR'S SURVEY BK 1 PG 681 DATED 1/21, 22 & 24/1887
- (0.0')C PER PLAT OF SURVEY 257 MISC. 776 DATED 8/6/1984
- (0.0')E PER W.P.A. CHAINING NOTES DATED 4/14/1941

(BEARINGS ARE ASSUMED)



HELLAND ENGINEERING & SURVEYING, LTD.
1107 Technology Parkway
Cedar Falls, Iowa 50613-6951
(319)-266-0161

SHINER = 8D NAIL & 1 5/16"Ø METAL SHINER
BRASS TAG = 13/16"Ø BRASS TAG
OPC = PLASTIC CAP (O=ORANGE, R=RED, Y=YELLOW)
(00') RECORDED AS FILE NAME: 08-264C2.DWG



I hereby certify that this land surveying document was prepared and the related survey work was performed by me or under my direct personal supervision and that I am a duly licensed Land Surveyor under the laws of the State of Iowa.
Jeffrey P. Helland 9/8/08
Jeffrey P. Helland
License Number 16264
My license renewal date is December 31, 2009.
All pages or sheets are covered by this seal except:

LIST CORNERS TO BE INDEXED			
CORNER	SECTION	TOWNSHIP	RANGE
E 1/4 CORNER	20	90N	14W
W 1/4 CORNER	21	90N	14W